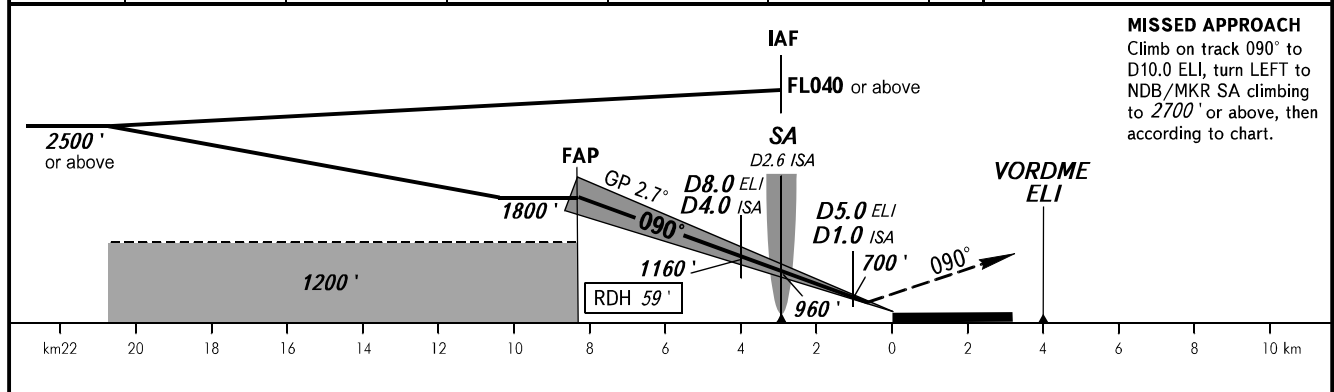
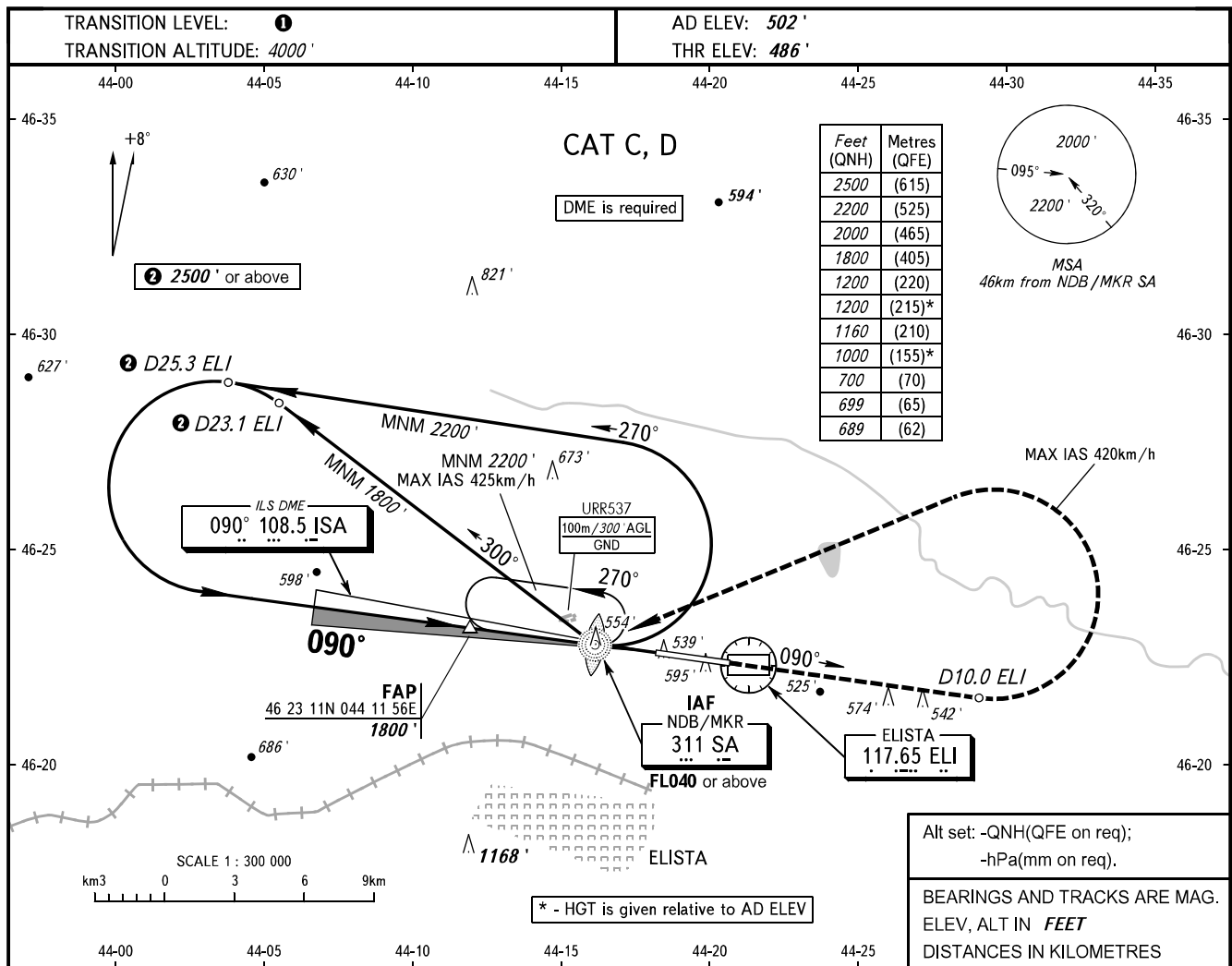


INSTRUMENT  
APPROACH  
CHART - ICAO

TOWER 124.200

ELISTA, RUSSIA  
ELISTA  
ILS Y RWY 09 CAT I



OCA(H)		A	B	C	D
Straight-in	<b>CAT I</b>			689' (203')	699' (213')
	Approach				
Circling				1100' (600')	1200' (690')

**TRANSITION LEVEL:**  
- FL050 when QNH is 1013 hPa (760mm mercury column) or above;  
- FL060 when QNH is 977 hPa (733mm mercury column) or above, but less than 1013 hPa (760mm mercury column);  
- FL070 when QNH is less than 977 hPa (733mm mercury column).

**WARNING**  
Zero range of DME ISA is indicated at RWY 09 THR.  
Visual manoeuvring in sector 080°-280° is PROHIBITED.

GROUND SPEED	km/h	150	180	210	240	270	300	330	360	390
RATE OF DESCENT	m/s	2.0	2.4	2.7	3.1	3.5	3.9	4.3	4.7	5.1
	ft/min	385	463	540	617	694	771	848	925	1002