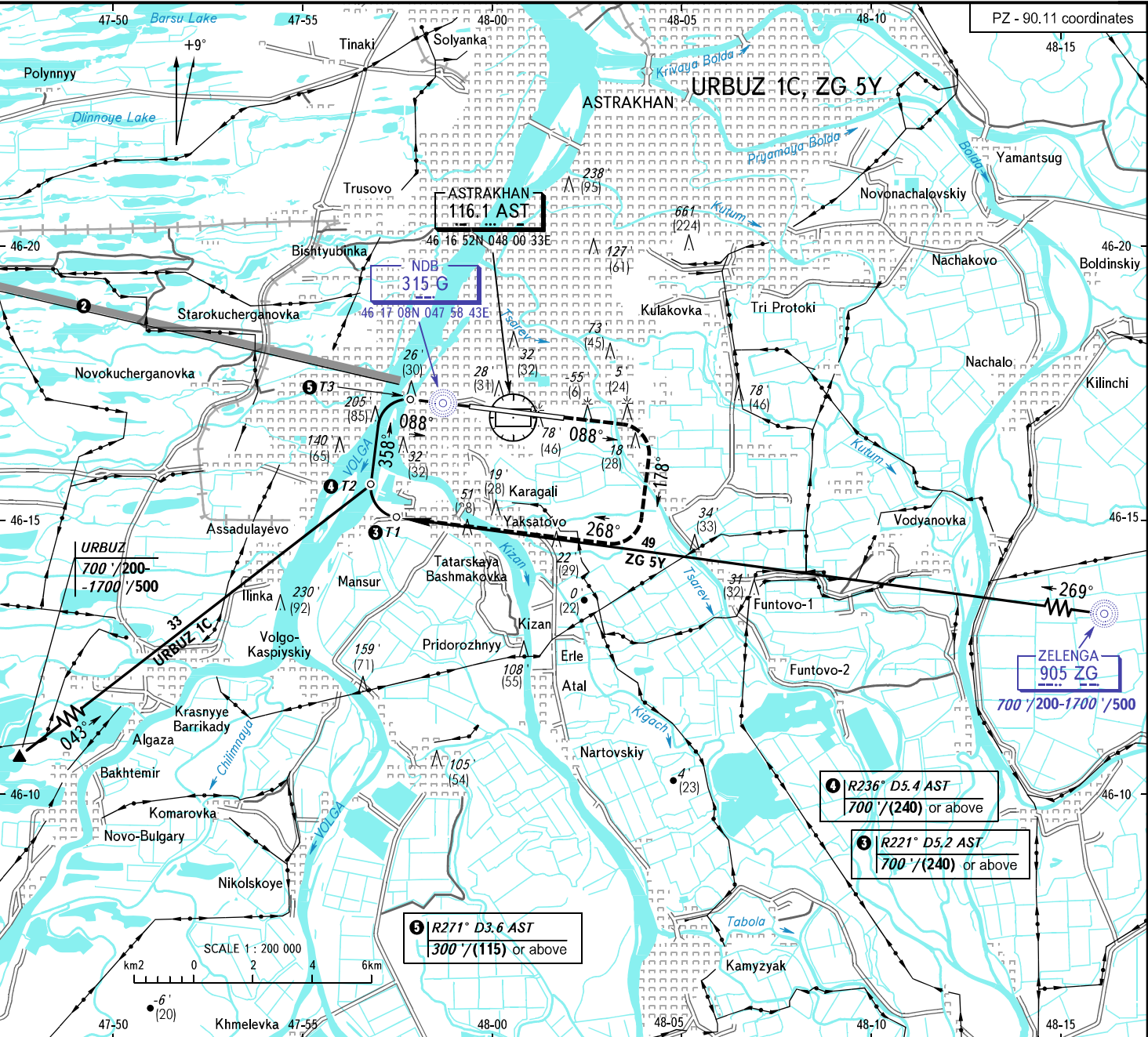


AIP
RUSSIA
VFR
ARRIVAL
CHART

TRANSITION
LEVEL: **1**

AD 2.1 URWA-205
21 MAR 24
ASTRAKHAN, RUSSIA
ASTRAKHAN
RWY 09



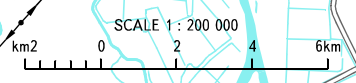
RADAR
TOWER
120,600
118,600

BEARINGS AND TRACKS ARE MAGNETIC
ALTITUDES IN FEET
ELEVATIONS IN FEET AND METRES
HEIGHTS IN METRES
DISTANCES IN KILOMETRES

Alt set: - QNH (QFE on req);
- hPa (mm on req).

1 TRANSITION LEVEL:
- FLO40 when QNH is 1013 hPa (760mm mercury column) or above;
- FLO50 when QNH is 977 hPa (733mm mercury column) or above, but less than 1013 hPa (760mm mercury column);
- FLO60 when QNH is less than 977 hPa (733mm mercury column).

2 ACFT flying to the North of limiting bearing line 279° from ARP at the distance from 5 to 40km at FL200 or below shall be carried out on coordination with ATIS unit.



Federal Air Transport Agency

AIRC AMDT 03/24