

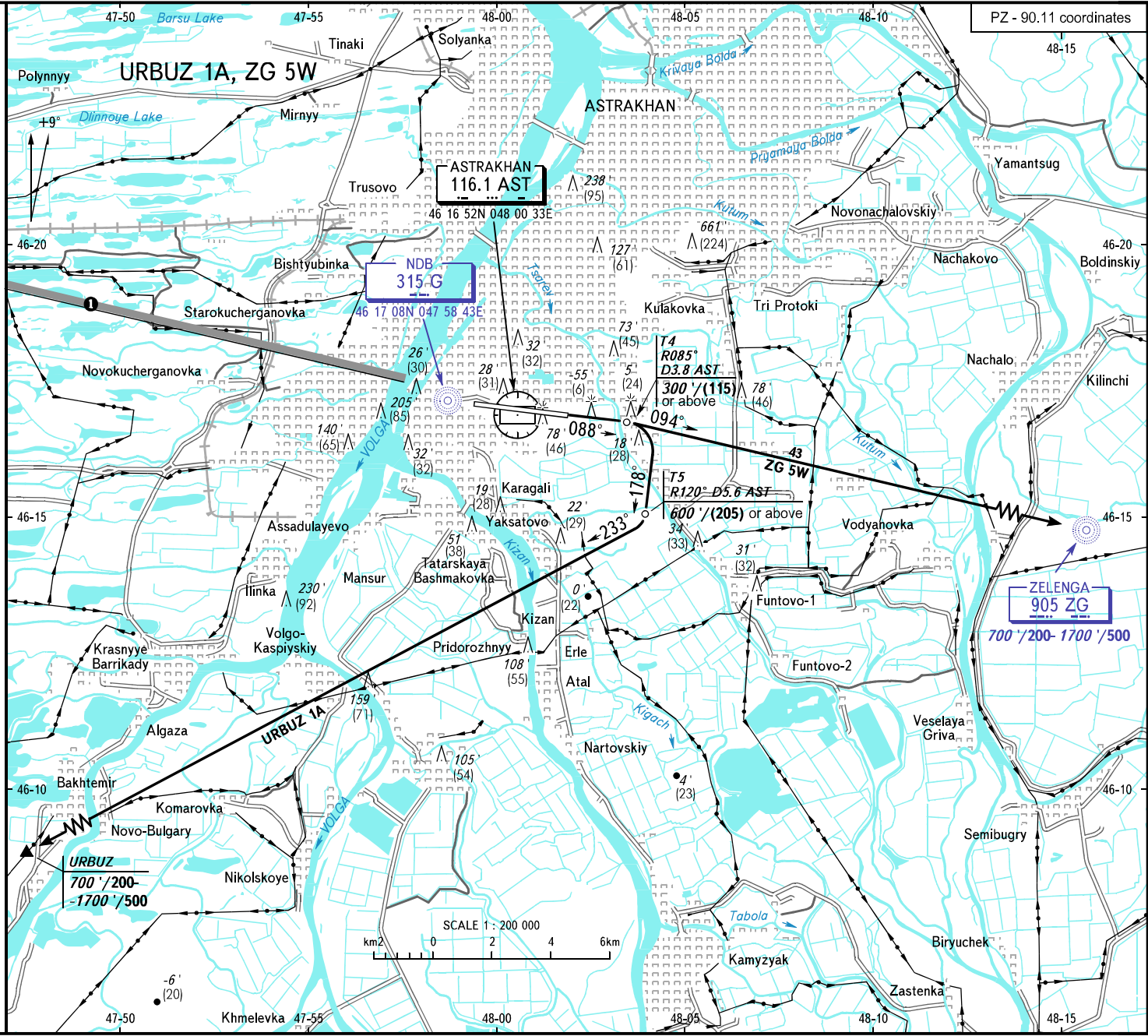
AIP  
RUSSIA  
VFR  
DEPARTURE  
CHART

ASTRAKHAN, RUSSIA  
ASTRAKHAN  
RWY 09

AD 2.1 URWA-203  
21 MAR 24

TRANSITION ALTITUDE: 3000'  
TRANSITION HEIGHT: 900'

PZ - 90.11 coordinates



TOWER  
RADAR

118.600  
120.600

① ACFT flying to the North of limiting bearing line 219° from ARP at the distance from 5 to 40km at FL200 or below shall be carried out on coordination with ATIS unit.

BEARINGS AND TRACKS ARE MAGNETIC  
ALTITUDES IN FEET  
ELEVATIONS IN FEET AND METRES  
HEIGHTS IN METRES  
DISTANCES IN KILOMETRES

Alt set: - QNH (QFE on req);  
- hPa (mm on req).