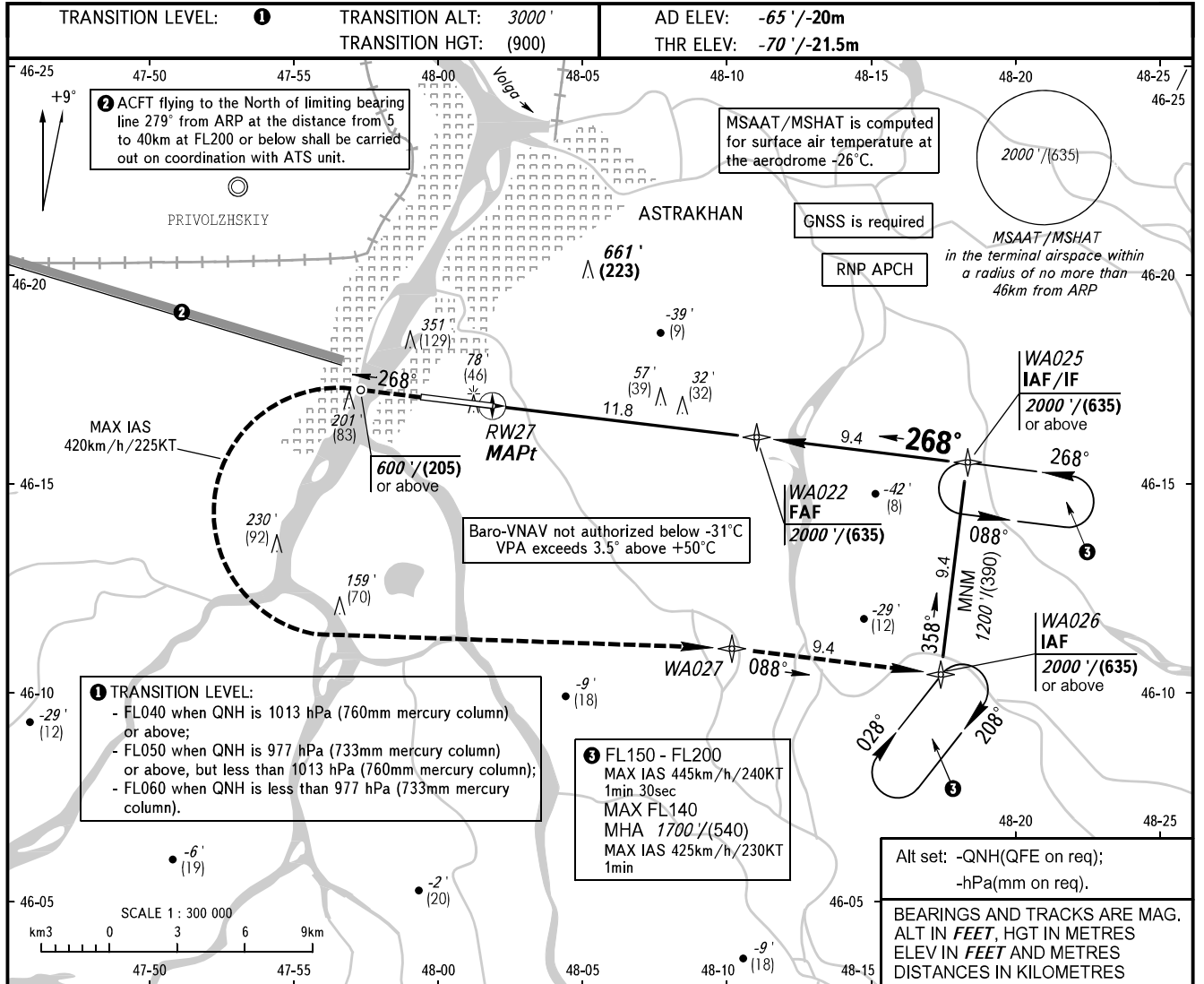


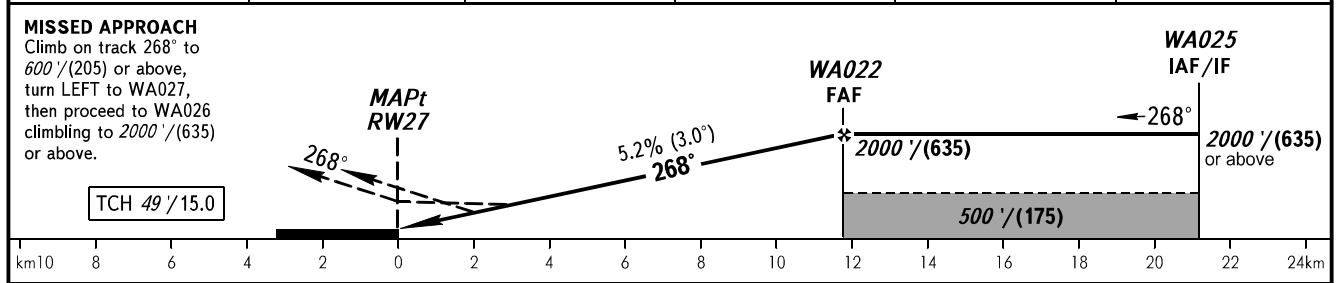
**INSTRUMENT  
APPROACH  
CHART - ICAO**

RADAR	120.600
TOWER	118.600

**ASTRAKHAN, RUSSIA**  
ASTRAKHAN  
RNP RWY 27



DIST to RW27	2.0	4.0	6.0	8.0	10.0
ALTITUDE/HEIGHT	320'/(120)	670'/(225)	1010'/(330)	1350'/(435)	1690'/(540)



OCA(H)		A	B	C	D	<b>WARNING:</b> 1. Simultaneous holding at the same ALT/FL is not authorized in holding areas at WA025 and WA026. 2. Visual manoeuvring north of aerodrome is PROHIBITED.
Straight-in	<b>LNAV</b>	320' (390')	320' (390')	320' (390')	320' (390')	
	<b>LNAV/VNAV</b>	210' (280')	230' (300')	230' (300')	240' (310')	
Approach		65 (85)	70 (90)	70 (95)	75 (95)	
Circling		380' (450')	500' (570')	600' (670')	630' (700')	
		120 (140)	155 (175)	185 (205)	195 (215)	

GROUND SPEED	km/h	150	180	210	240	270	300	330	360
	kt	81	97	113	130	146	162	178	195
RATE OF DESCENT	m/s	2.2	2.6	3.0	3.5	3.9	4.3	4.8	5.2
	ft/min	427	512	597	682	768	853	938	1024