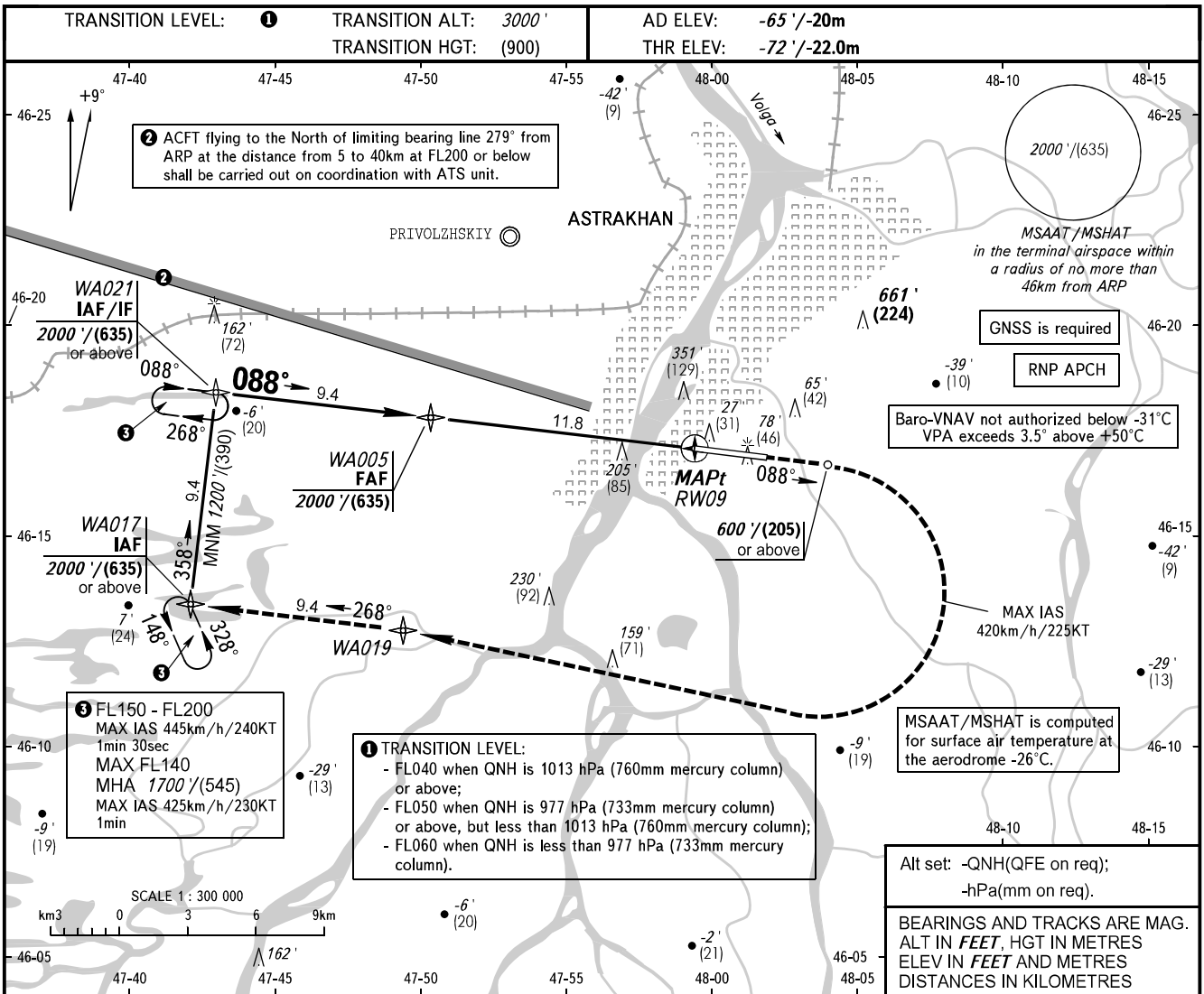


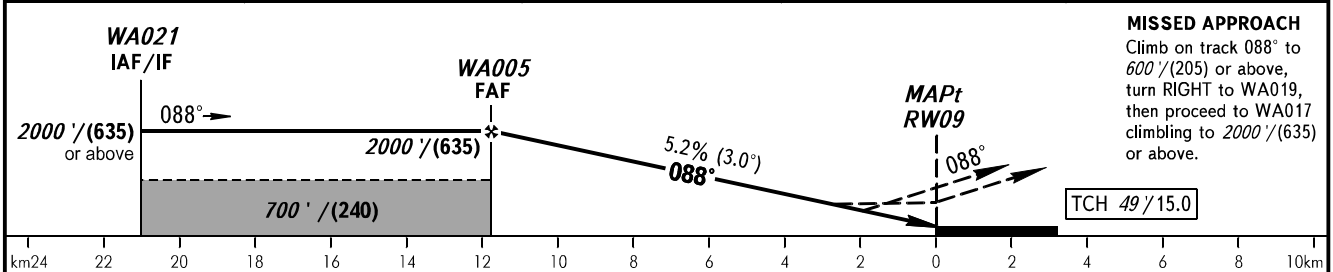
**INSTRUMENT
APPROACH
CHART - ICAO**

RADAR	120.600
TOWER	118.600

ASTRAKHAN, RUSSIA
ASTRAKHAN
RNP RWY 09



DIST to RW09	10.0	8.0	6.0	4.0
ALTITUDE/HEIGHT	1690'/(540)	1350'/(435)	1010'/(330)	670'/(225)



OCA(H)		A	B	C	D
Straight-in	LNAV	460' (540')	460' (540')	460' (540')	460' (540')
		145 (165)	145 (165)	145 (165)	145 (165)
Approach	LNAV/VNAV	340' (410')	350' (420')	360' (430')	370' (440')
		105 (125)	110 (130)	110 (135)	115 (135)
Circling		380' (450')	500' (570')	600' (670')	630' (700')
		120 (140)	155 (175)	185 (205)	195 (215)

WARNING:
1. Simultaneous holding at the same ALT/FL is not authorized in holding areas at WA021 and WA017.
2. Visual manoeuvring north of aerodrome is PROHIBITED.

GROUND SPEED	km/h	150	180	210	240	270	300	330	360
	kt	81	97	113	130	146	162	178	195
RATE OF DESCENT	m/s	2.2	2.6	3.0	3.5	3.9	4.3	4.8	5.2
	ft/min	427	512	597	682	768	853	938	1024

CHANGE: New chart