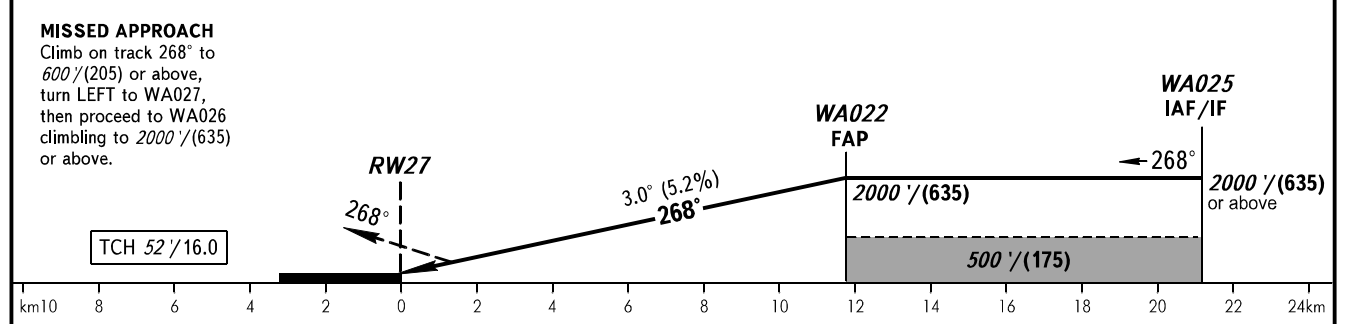
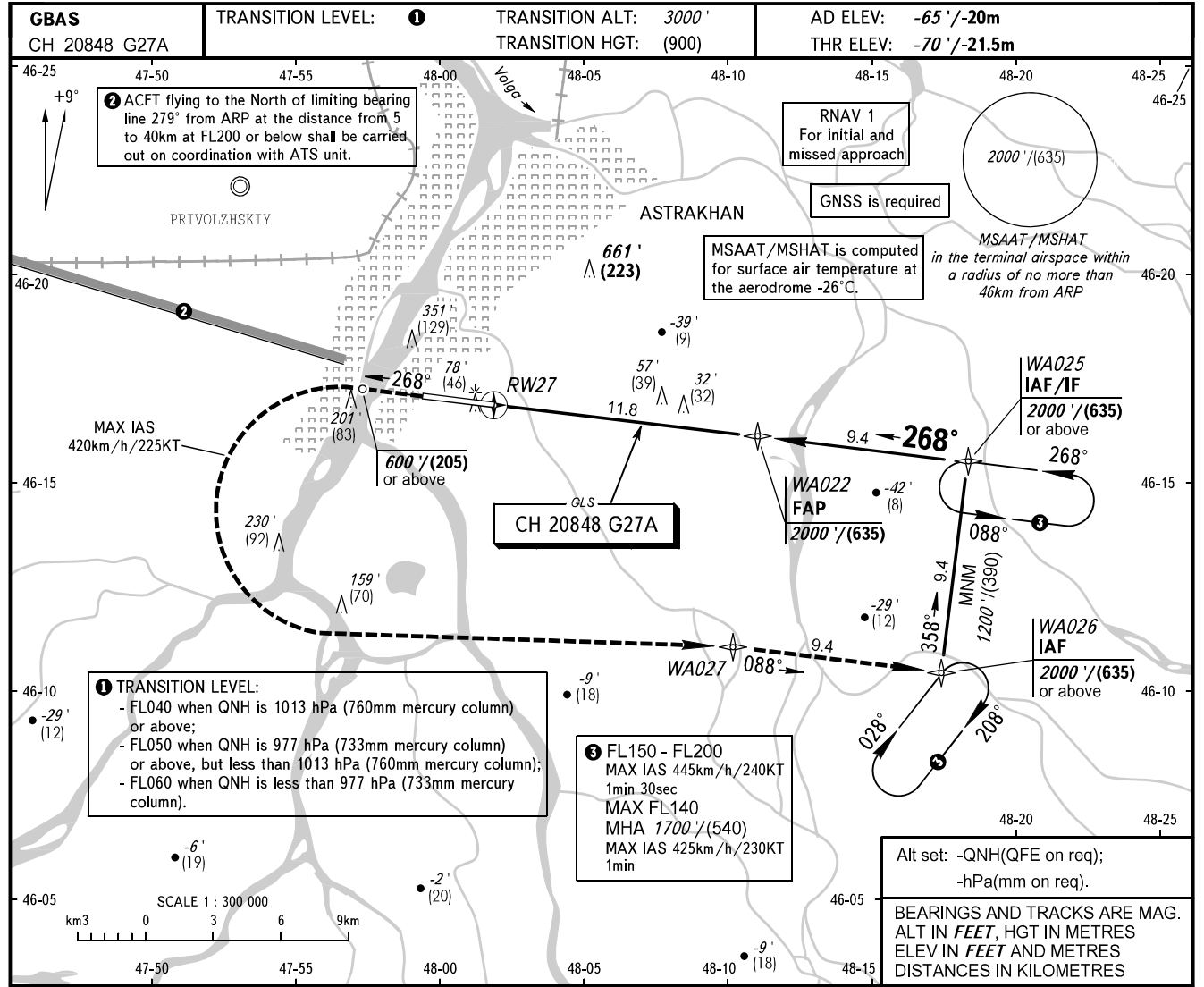


**INSTRUMENT  
APPROACH  
CHART - ICAO**

**ASTRAKHAN, RUSSIA  
ASTRAKHAN  
GLS RWY 27**

RADAR **120.600**  
TOWER **118.600**



OCA(H)		A	B	C	D	<b>WARNING:</b> 1. Simultaneous holding at the same ALT/FL is not authorized in holding areas at WA025 and WA026. 2. Visual manoeuvring north of aerodrome is PROHIBITED.			
Straight-in	CAT I	130' (200') 39 (60)	130' (200') 39 (60)	130' (200') 39 (60)	130' (200') 39 (60)				
	Approach								
Circling		380' (450') 120 (140)	500' (570') 155 (175)	600' (670') 185 (205)	630' (700') 195 (215)				
GROUND SPEED	km/h	150	180	210	240	270	300	330	360
	kt	81	97	113	130	146	162	178	195
RATE OF DESCENT	m/s	2.2	2.6	3.0	3.5	3.9	4.3	4.8	5.2
	ft/min	427	512	597	682	768	853	938	1024