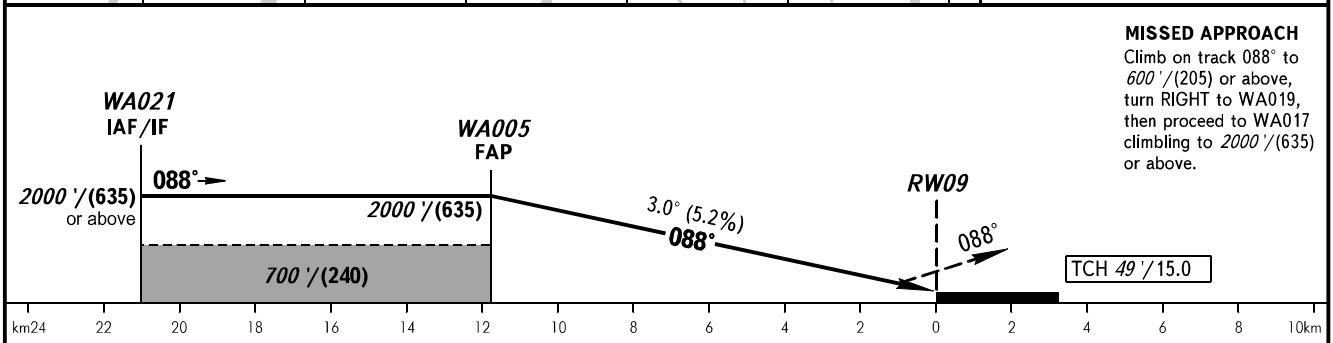
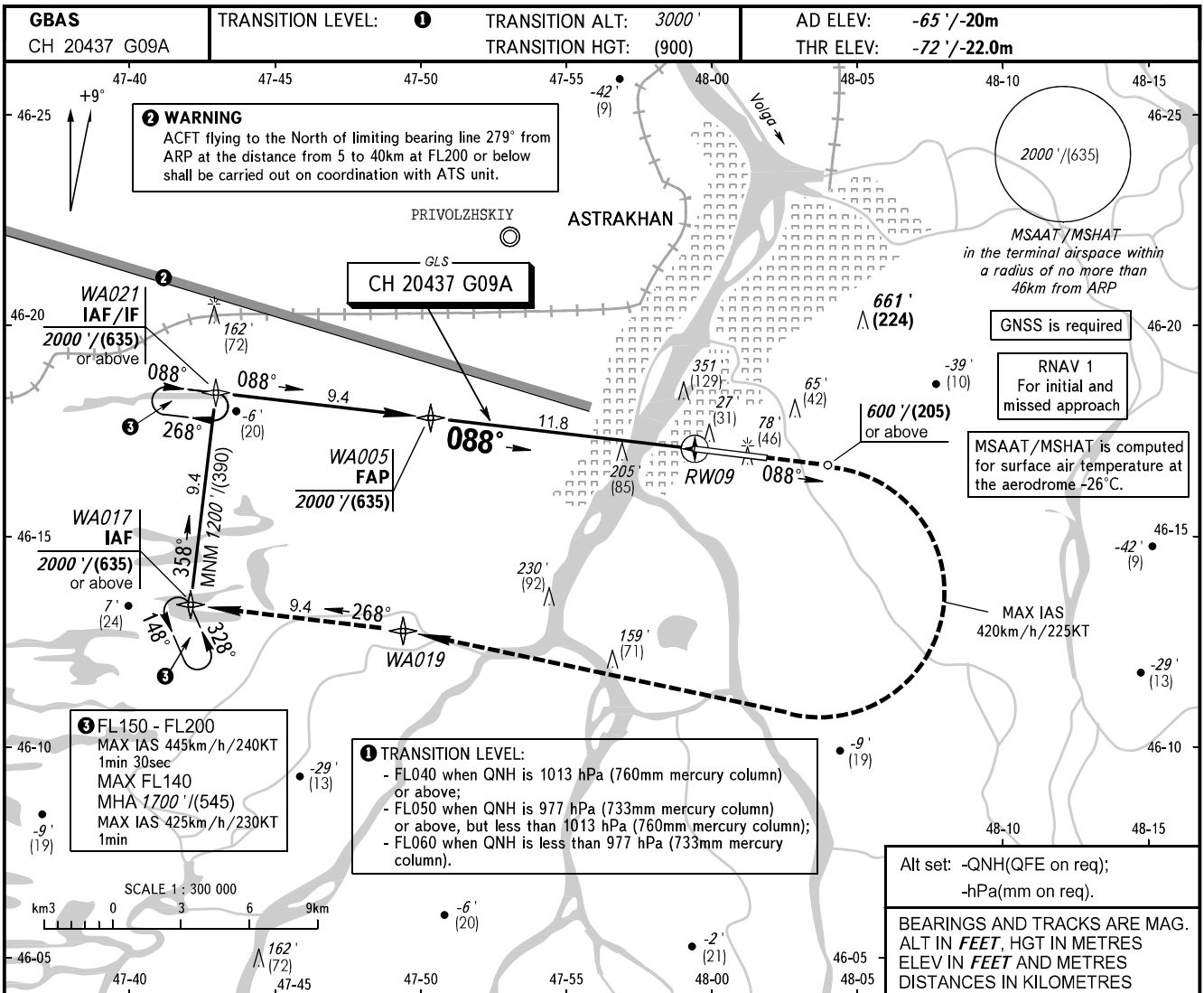


**INSTRUMENT
APPROACH
CHART - ICAO**

RADAR	120.600
TOWER	118.600

ASTRAKHAN, RUSSIA
ASTRAKHAN
GLS RWY 09



OCA(H)		A	B	C	D				
Straight-in	CAT I	128' (200')	128' (200')	128' (200')	128' (200')				
		39 (60)	39 (60)	39 (60)	39 (60)				
Approach									
Circling		380' (450')	500' (570')	600' (670')	630' (700')				
		120 (140)	155 (175)	185 (205)	195 (215)				
GROUND SPEED	km/h	150	180	210	240	270	300	330	360
	kt	81	97	113	130	146	162	178	195
RATE OF DESCENT	m/s	2.2	2.6	3.0	3.5	3.9	4.3	4.8	5.2
	ft/min	427	512	597	682	768	853	938	1024

WARNING:

- Simultaneous holding at the same ALT/FL is not authorized in holding areas at WA021 and WA017.
- Visual manoeuvring north of aerodrome is PROHIBITED.

CHANGE: New chart