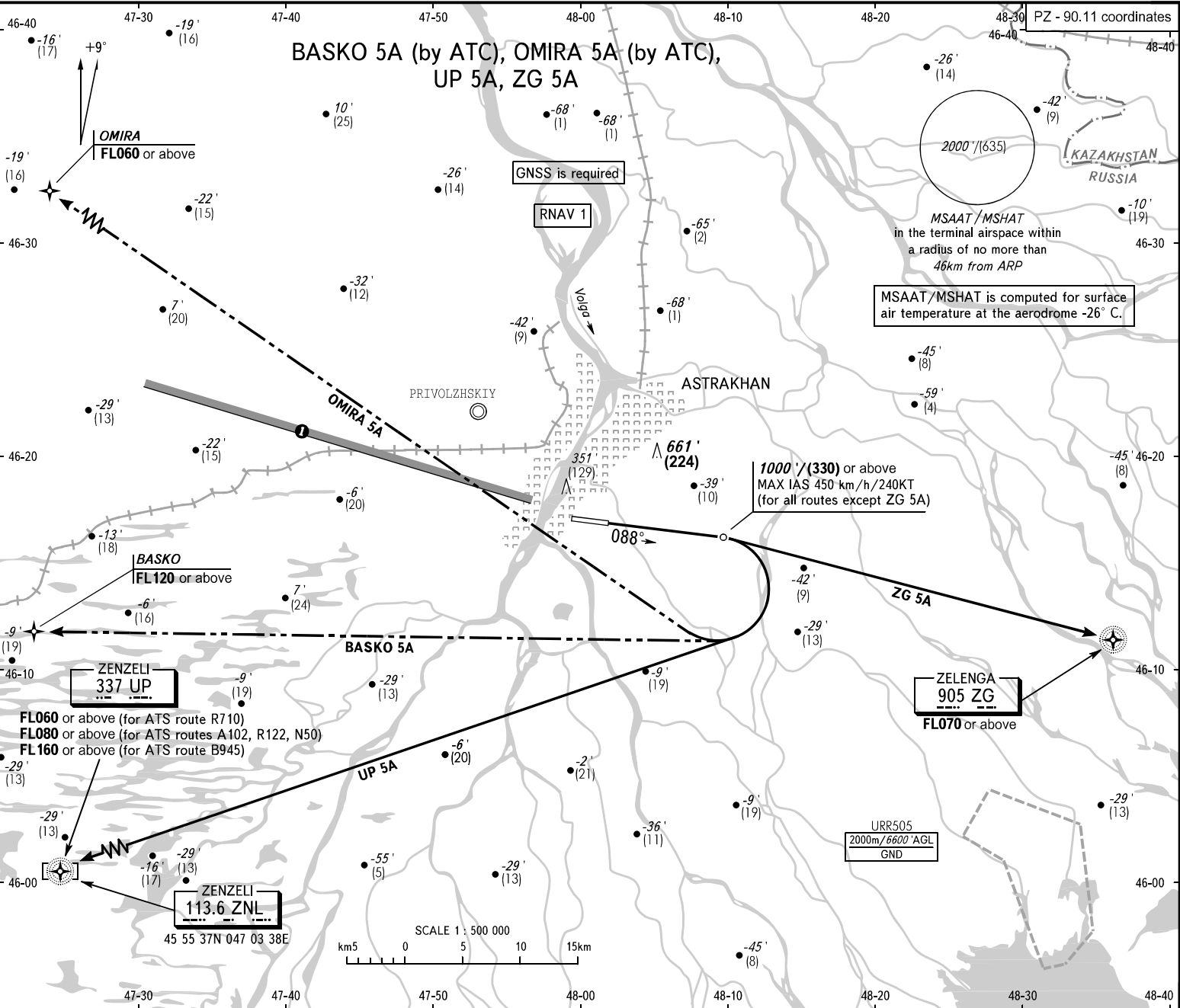


STANDARD DEPARTURE CHART
 INSTRUMENT (SID) - ICAO

TRANSITION
 ALT/HGT: 3000 / (900)

ASTRAKHAN, RUSSIA
 ASTRAKHAN
 RNAV Rwy 09



TOWER
 118.600

RADAR
 120.600

APPROACH
 126.000

BEARINGS AND TRACKS ARE MAGNETIC
 ELEVATIONS IN FEET AND METRES
 ALTITUDES IN FEET
 HEIGHTS IN METRES
 DISTANCES IN KILOMETRES

Alt set: -QNH(QFE on req);
 -hPa(mm on req).

WARNING:

1. Turn before passing DER is PROHIBITED.
2. The minimum climb gradients required due to the airspace structure:
 - 4.6% up to FL160 for UP 5A (for ATS route B945);
 - 4.9% up to FL070 for ZG 5A.

ACFT flying to the North of limiting bearing line 279° from ARP at the distance from 5 to 40km at FL200 or below shall be carried out on coordination with ATS unit.