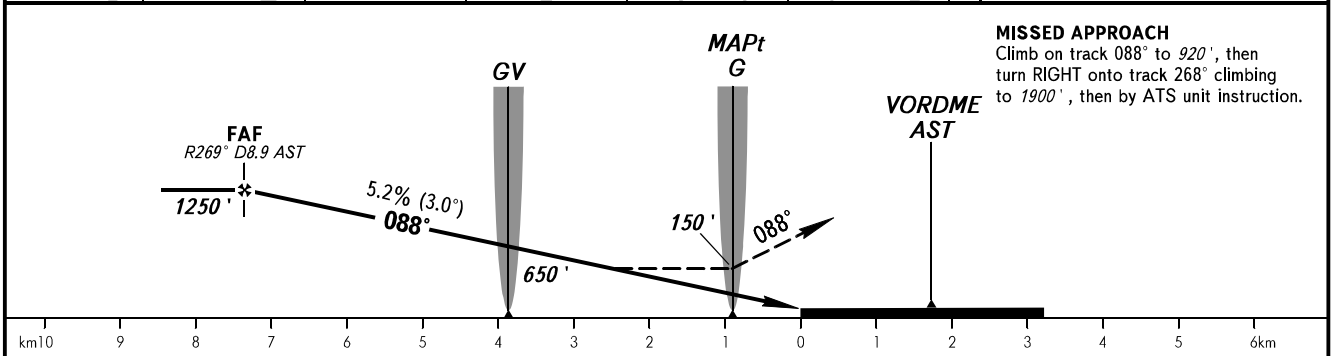
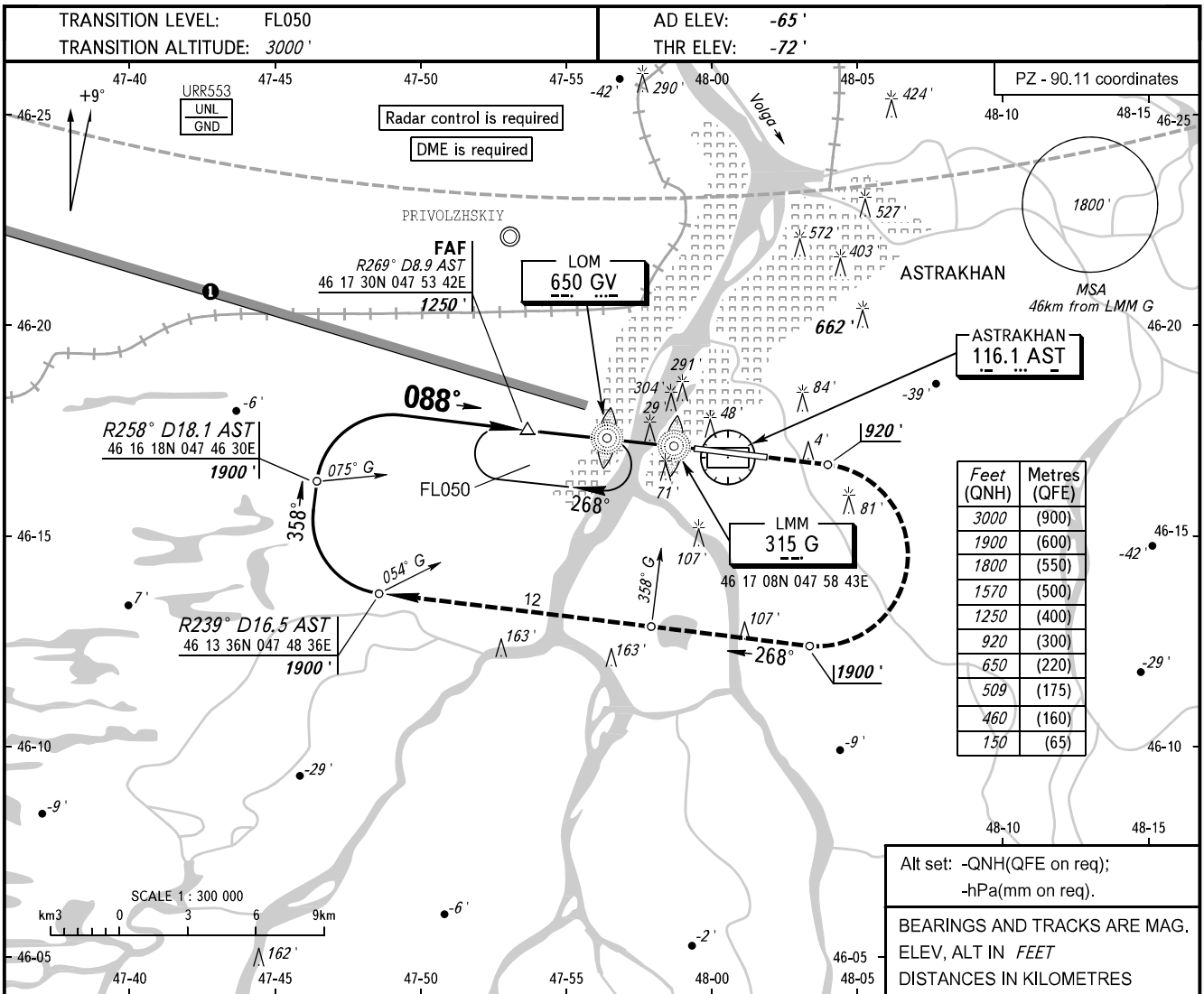


**INSTRUMENT  
APPROACH  
CHART - ICAO**

**ASTRAKHAN, RUSSIA**  
ASTRAKHAN  
NDB Z RWY 09

RADAR	120.600
TOWER	118.600



OCA(H)		A	B	C	D	
Straight-in Approach	<b>NDB (LMM)</b>	<b>With FAF</b>	460' (525')	460' (525')	460' (525')	460' (525')
		<b>WO FAF</b>	509' (575')	509' (575')	509' (575')	509' (575')

**WARNING**  
Heavy turbulence with down-draughts and windshear may be expected on final.

① ACFT flying to the North of limiting bearing line 279° from ARP at the distance from 5 to 40km at FL200 or below shall be carried out on coordination with ATS unit.

GROUND SPEED	km/h	150	180	210	240	270	300	330	360	390
FAF-MAPt 6444m	min:sec	2:35	2:09	1:50	1:37	1:26	1:17	1:10	1:04	0:59
RATE OF DESCENT	m/s	2.2	2.6	3.0	3.5	3.9	4.3	4.8	5.2	5.6
	ft/min	427	512	597	682	768	853	938	1024	1109

CHANGE: New chart