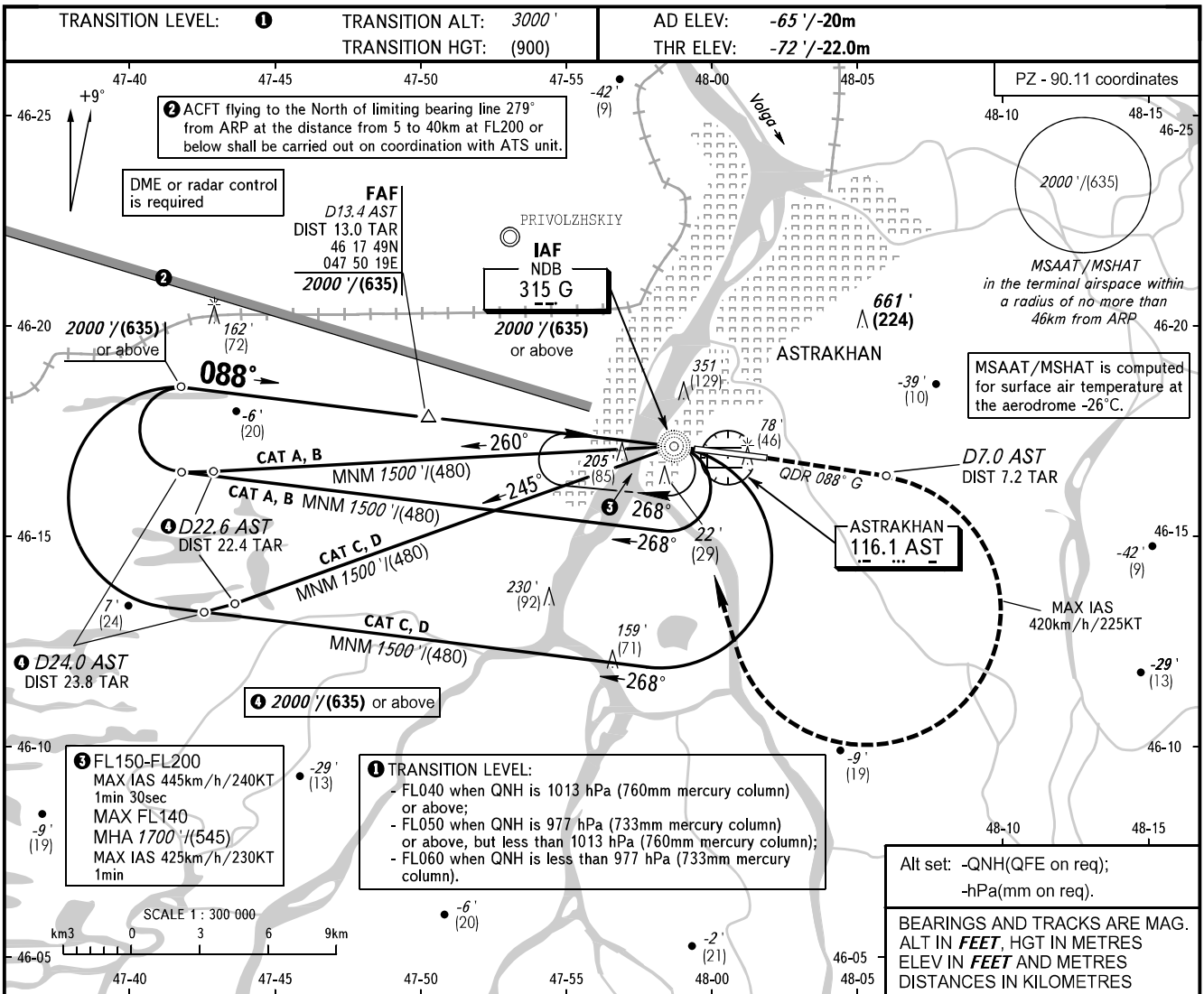


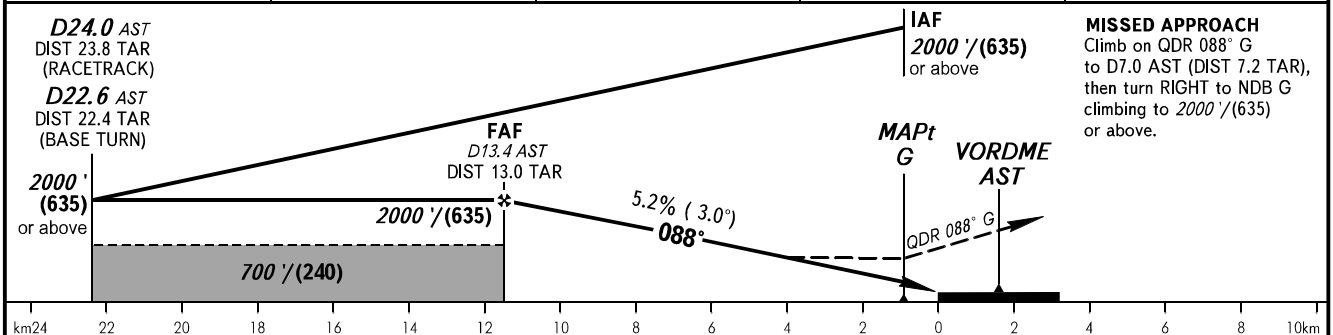
**INSTRUMENT
APPROACH
CHART - ICAO**

RADAR	120.600
TOWER	118.600

ASTRAKHAN, RUSSIA
ASTRAKHAN
NDB RWY 09



DME AST	12.0	10.0	8.0	6.0
ALTITUDE/HEIGHT	1770'/(565)	1430'/(460)	1090'/(355)	750'/(250)



OCA(H)		A	B	C	D	NOTE: 1. TAR distance is indicated from ARP. 2. MAPt at NDB G. Timing not authorized for defining MAPt.			
Straight-in Approach		460' (530') 140 (165)	460' (530') 140 (165)	460' (530') 140 (165)	460' (530') 140 (165)				
Circling		460' (530') 140 (165)	500' (570') 155 (175)	600' (670') 185 (205)	630' (700') 195 (215)	WARNING Visual manoeuvring to the north of AD is PROHIBITED.			
GROUND SPEED	km/h	150	180	210	240		270	300	330
	kt	81	97	113	130	146	162	178	195
RATE OF DESCENT	m/s	2.2	2.6	3.0	3.5	3.9	4.3	4.8	5.2
	ft/min	427	512	597	682	768	853	938	1024

CHANGE: New chart