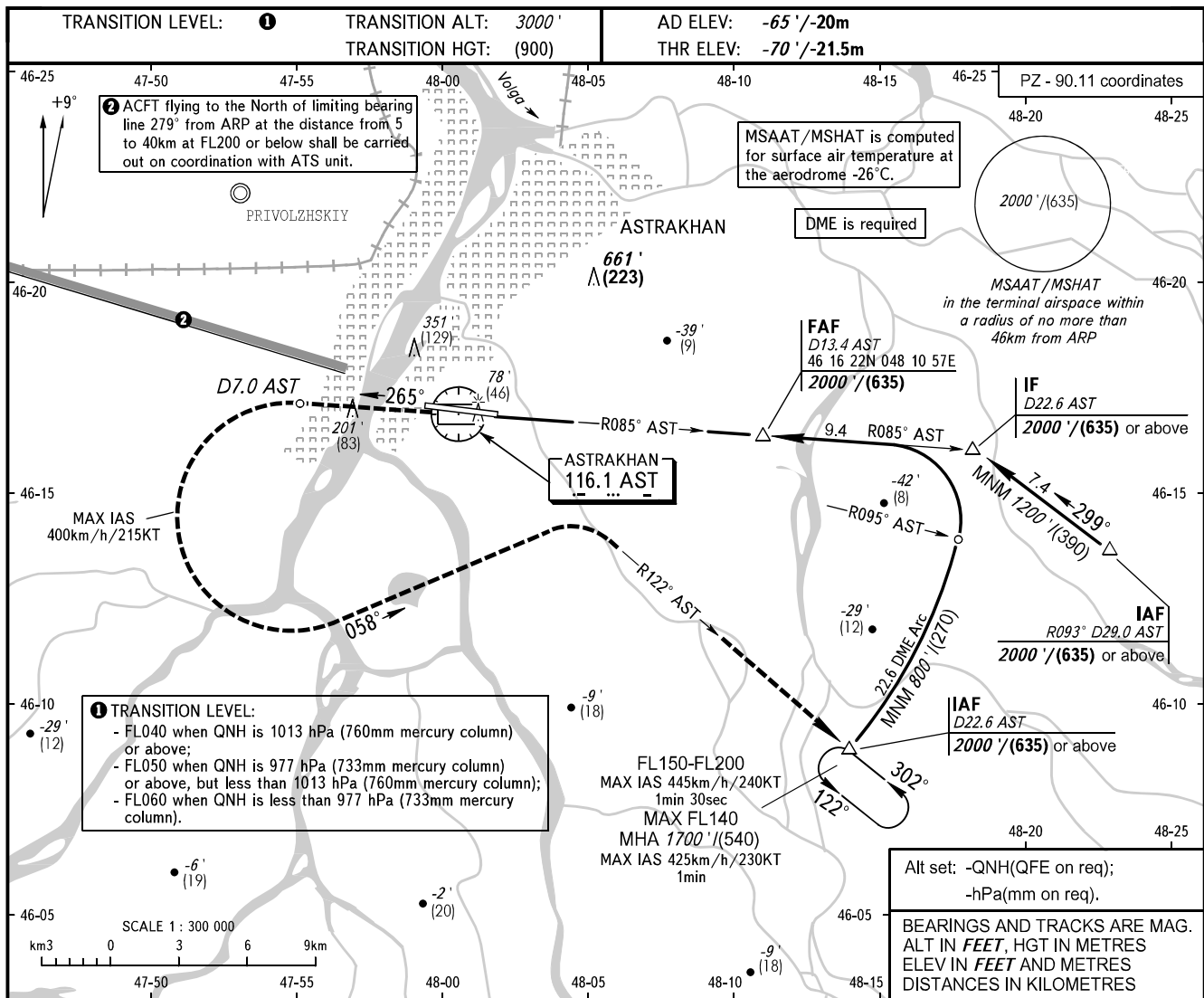


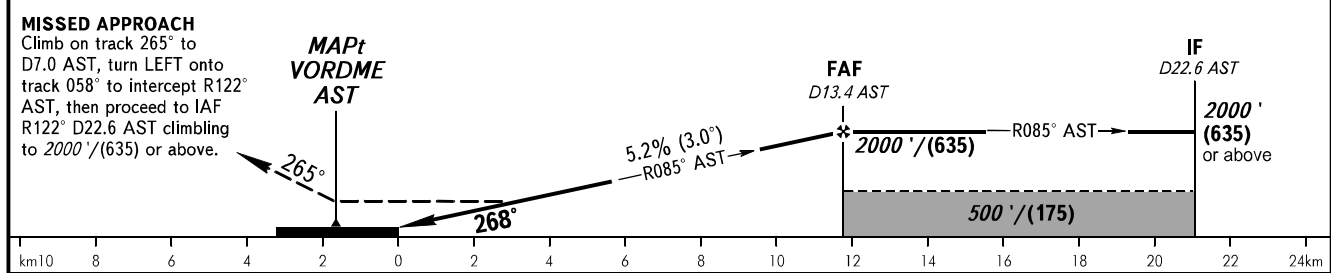
**INSTRUMENT
APPROACH
CHART - ICAO**

RADAR **120.600**
TOWER **118.600**

ASTRAKHAN, RUSSIA
ASTRAKHAN
VOR RWY 27



DME AST	6.0	8.0	10.0	12.0
ALTITUDE/HEIGHT	720'/(240)	1060'/(345)	1400'/(450)	1740'/(555)



OCA(H)		A	B	C	D	NOTE: 1. MAPt at VORDME AST. Timing not authorized for defining MAPt. 2. Final approach track is offset by 3° from the RWY centre line. 3. Visual manoeuvring north of aerodrome is PROHIBITED.			
Straight-in		360' (430')	360' (430')	360' (430')	360' (430')				
		110 (135)	110 (135)	110 (135)	110 (135)				
Approach									
Circling		430' (500')	500' (570')	600' (670')	630' (700')				
		135 (155)	155 (175)	185 (205)	195 (215)				
GROUND SPEED	km/h	150	180	210	240	270	300	330	360
	kt	81	97	113	130	146	162	178	195
RATE OF DESCENT	m/s	2.2	2.6	3.0	3.5	3.9	4.3	4.8	5.2
	ft/min	427	512	597	682	768	853	938	1024