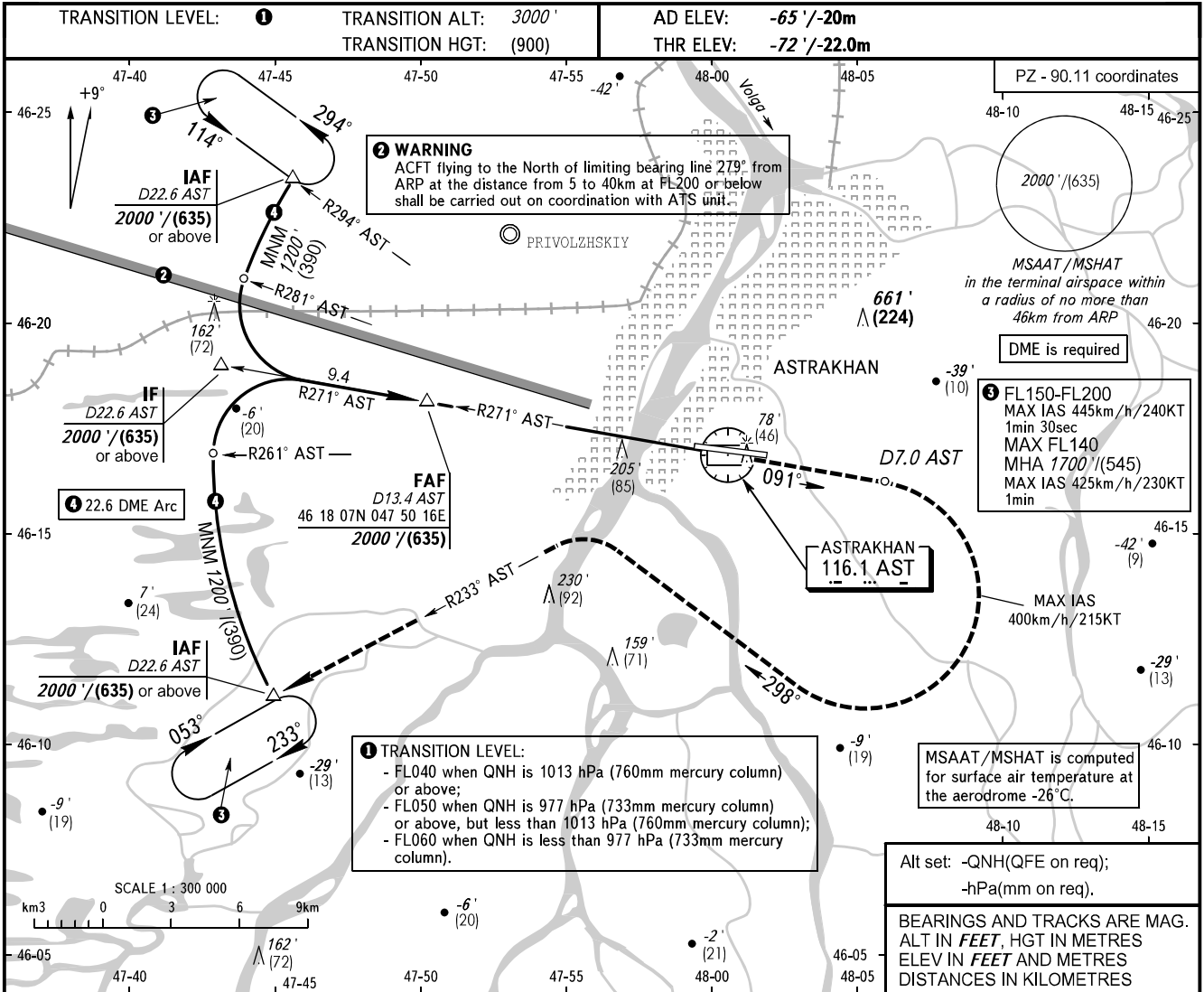


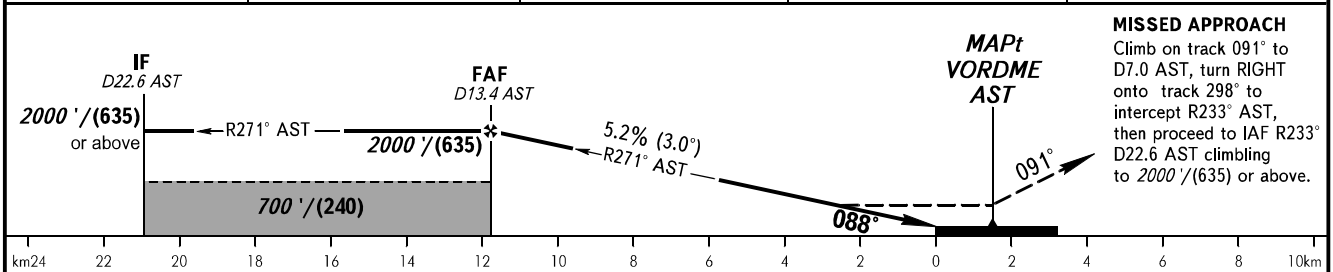
**INSTRUMENT  
APPROACH  
CHART - ICAO**

RADAR	120.600
TOWER	118.600

**ASTRAKHAN, RUSSIA**  
ASTRAKHAN  
VOR RWY 09



DME AST	12.0	10.0	8.0	6.0
ALTITUDE/HEIGHT	1770' / (565)	1430' / (460)	1090' / (355)	750' / (250)



OCA(H)		A	B	C	D
Straight-in	Approach	460' (540')	460' (540')	460' (540')	460' (540')
	Approach	145 (165)	145 (165)	145 (165)	145 (165)
Circling	Approach	460' (540')	500' (570')	600' (670')	630' (700')
	Approach	145 (165)	155 (175)	185 (205)	195 (215)

**NOTE:**  
1. MAPt at VORDME AST. Timing not authorized for defining MAPt.  
2. Final approach track is offset by 3° from the RWY centre line.  
3. Visual manoeuvring north of aerodrome is PROHIBITED.

GROUND SPEED	km/h	150	180	210	240	270	300	330	360
	kt	81	97	113	130	146	162	178	195
RATE OF DESCENT	m/s	2.2	2.6	3.0	3.5	3.9	4.3	4.8	5.2
	ft/min	427	512	597	682	768	853	938	1024

CHANGE: New chart