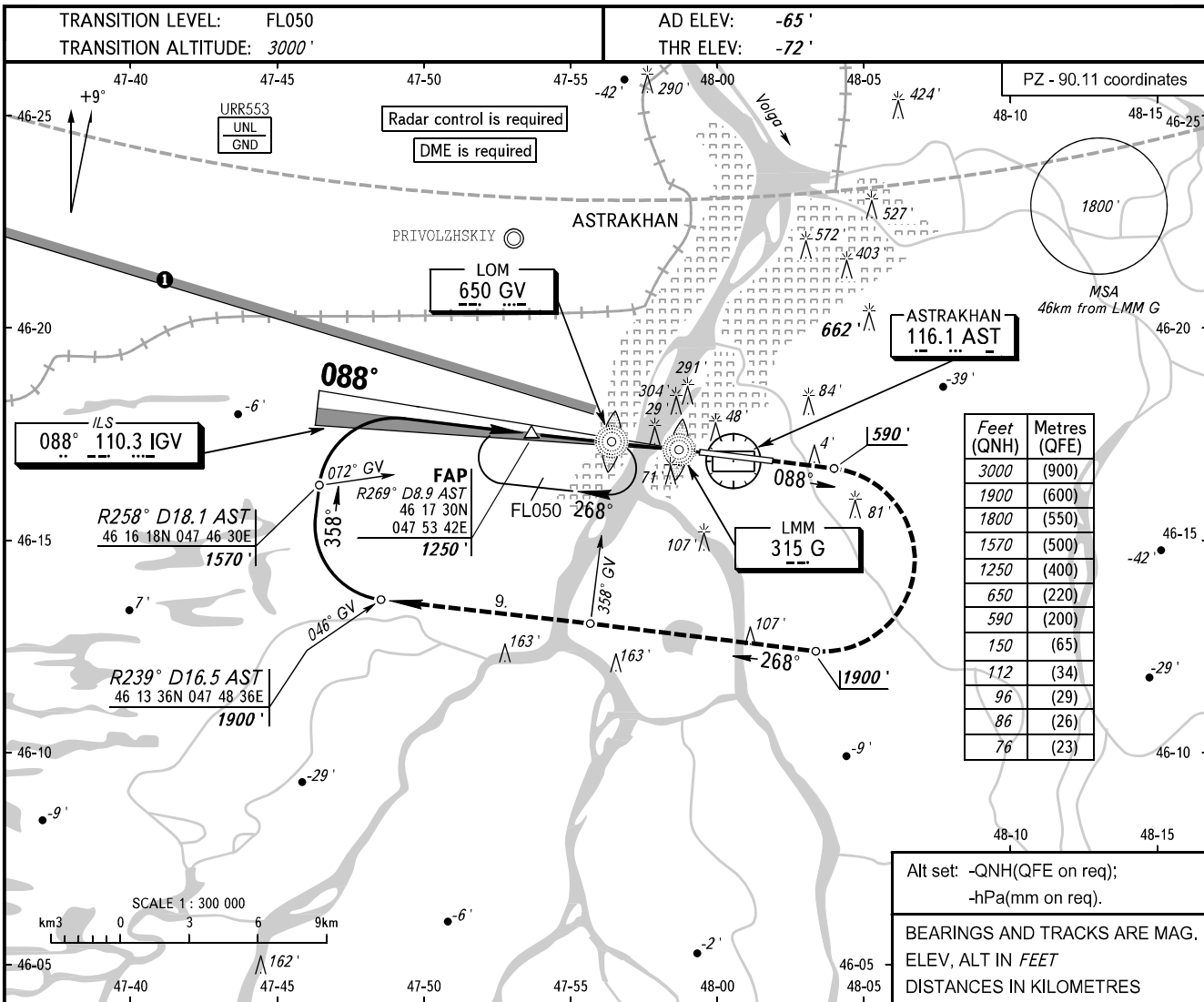


**INSTRUMENT
APPROACH
CHART - ICAO**

| | |
|-------|---------|
| RADAR | 120.600 |
| TOWER | 118.600 |

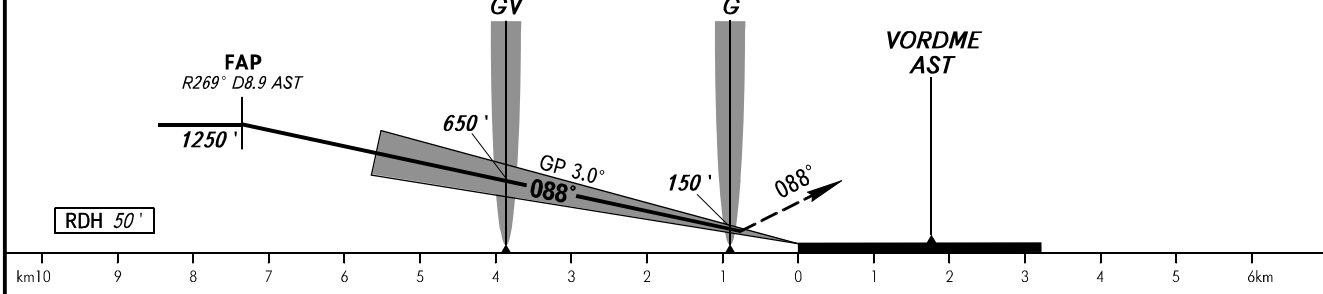
ASTRAKHAN, RUSSIA
ASTRAKHAN
ILS Z RWY 09 CAT I



Alt set: -QNH(QFE on req);
-hPa(mm on req).

BEARINGS AND TRACKS ARE MAG.
ELEV, ALT IN FEET
DISTANCES IN KILOMETRES

MISSED APPROACH
Climb on track 088° to 590', then turn RIGHT onto track 268° climbing to 1900', then by ATS unit instruction.



CHANGE: New chart