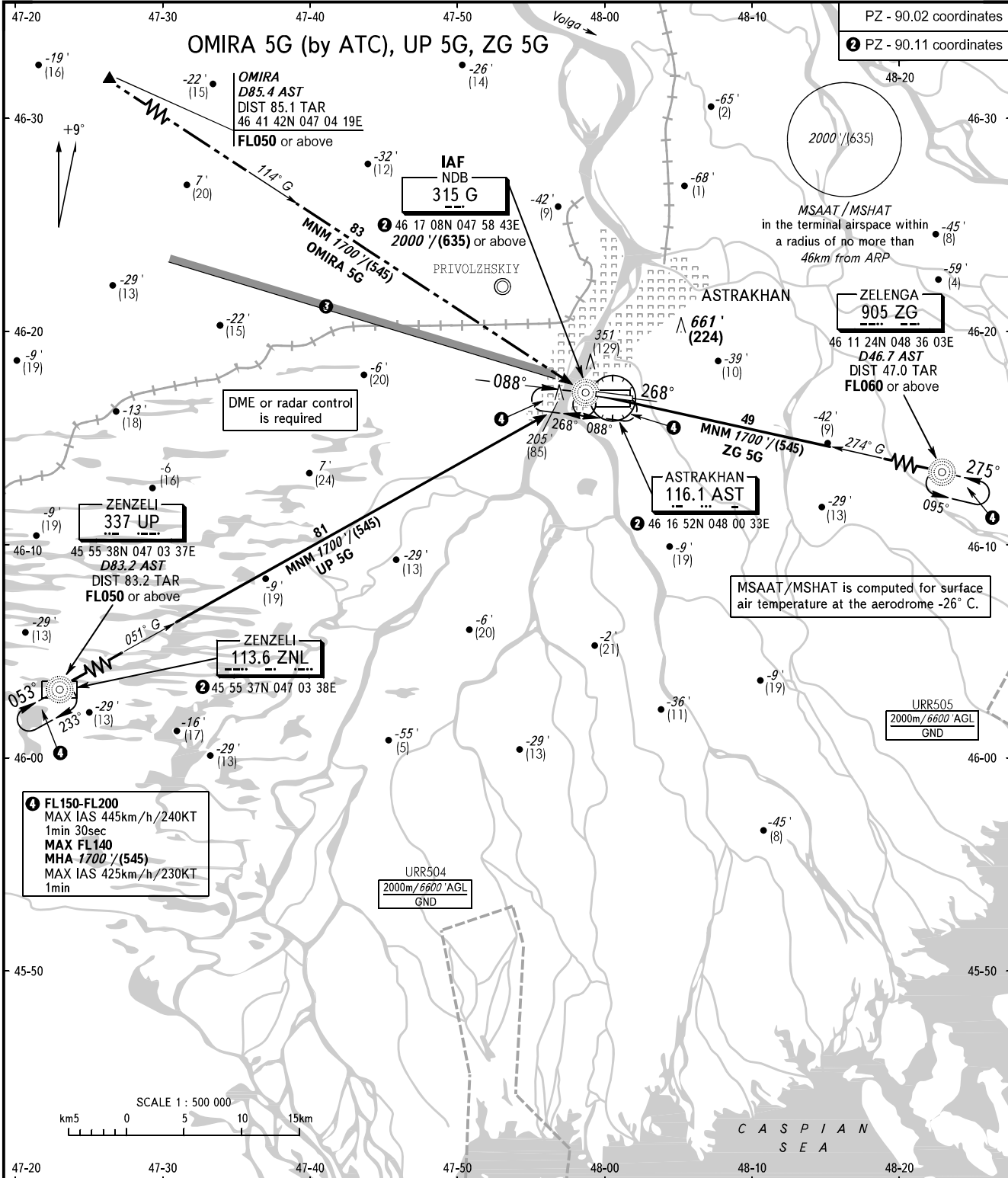


STANDARD ARRIVAL CHART
INSTRUMENT (STAR) - ICAO

ASTRAKHAN, RUSSIA
ASTRAKHAN
RWY 09/27

TRANSITION
LEVEL: ①



APPROACH 126.000
RADAR 120.600
TOWER 118.600

- ① TRANSITION LEVEL:
- FL040 when QNH is 1013 hPa (760mm mercury column) or above;
- FL050 when QNH is 977 hPa (733mm mercury column) or above, but less than 1013 hPa (760mm mercury column);
- FL060 when QNH is less than 977 hPa (733mm mercury column).
- ③ ACFT flying to the North of limiting bearing line 279° from ARP at the distance from 5 to 40km at FL200 or below shall be carried out on coordination with ATS unit.

BEARINGS AND TRACKS ARE MAGNETIC
ELEVATIONS IN FEET AND METRES
ALTITUDES IN FEET
HEIGHTS IN METRES
DISTANCES IN KILOMETRES

Alt set: -QNH(QFE on req);
-hPa(mm on req).

NOTE
HGT is given relative to RWY 09 THR ELEV -72'/-22m.

CHANGE: New chart