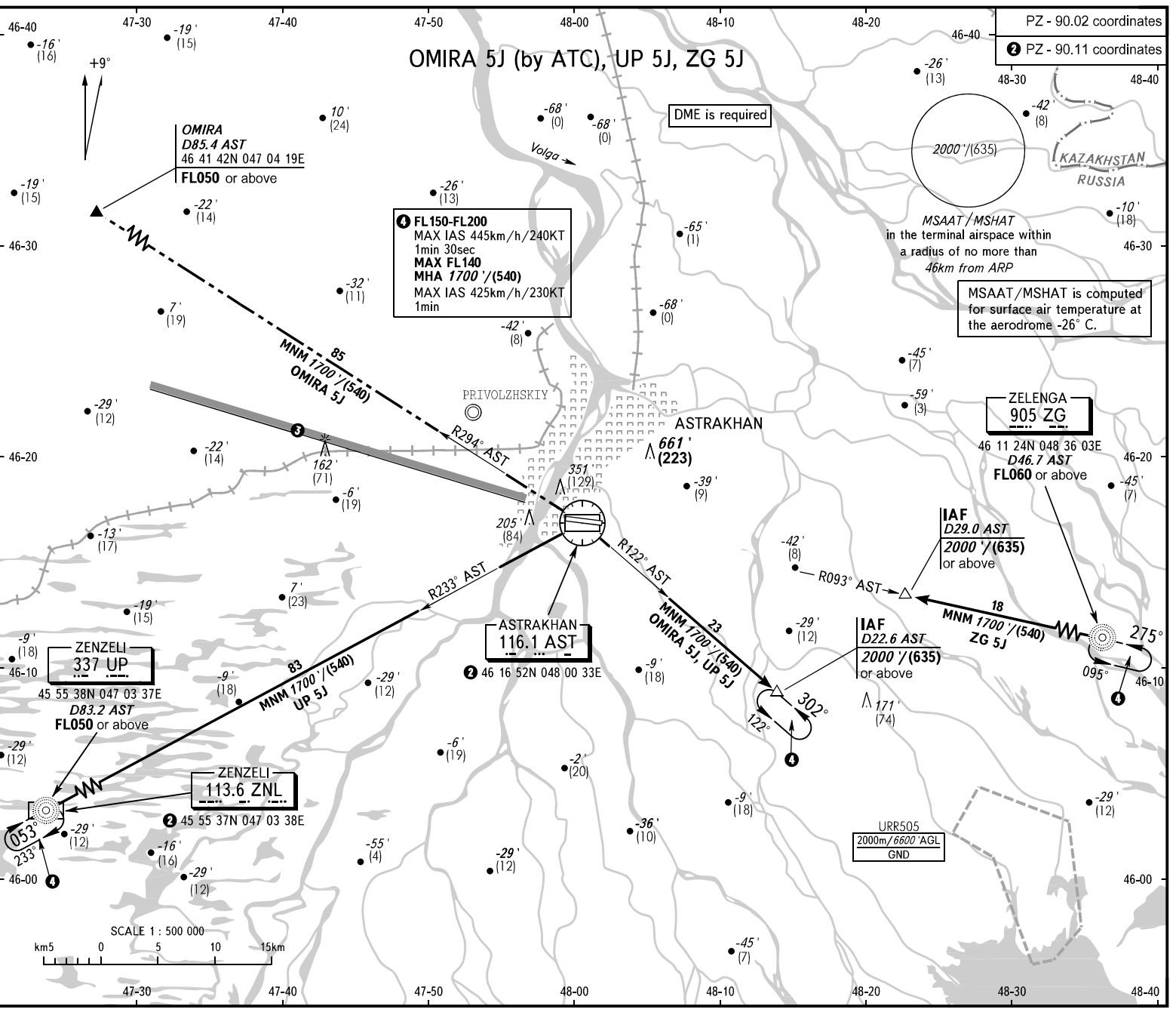


STANDARD ARRIVAL CHART
INSTRUMENT (STAR) - ICAO

TRANSITION
LEVEL: 1

ASTRAKHAN, RUSSIA
ASTRAKHAN
RWY 27



APPROACH
RADAR
TOWER

126.000
120.600
118.600

BEARINGS AND TRACKS ARE MAGNETIC
ELEVATIONS IN FEET AND METRES
ALTITUDES IN FEET
HEIGHTS IN METRES
DISTANCES IN KILOMETRES

All set - QNH(QFE on req.):
-hPa(mm on req.)

Federal Air Transport Agency

CHANGE: New chart