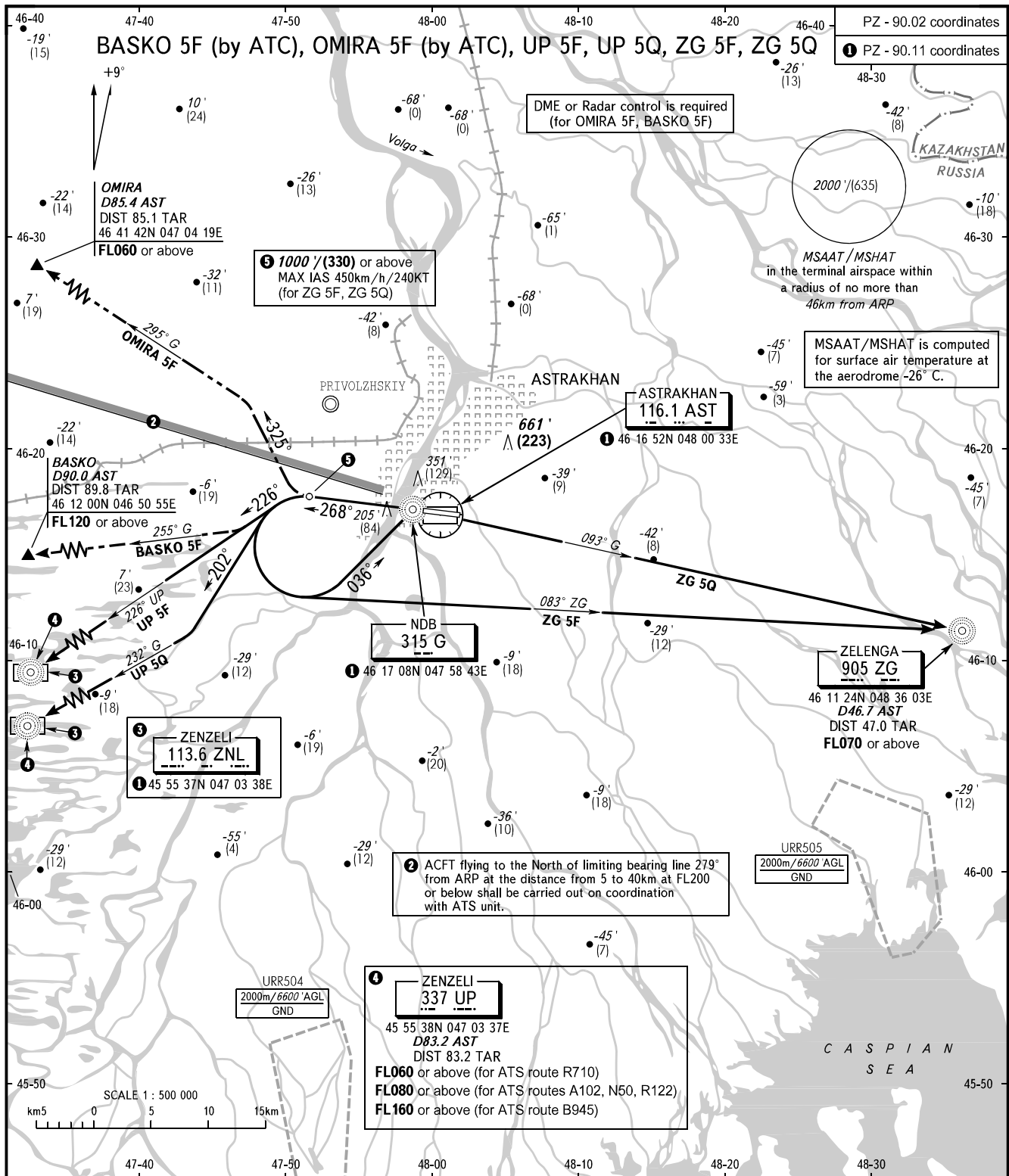


STANDARD DEPARTURE CHART
INSTRUMENT (SID) - ICAO

TRANSITION
ALT/HGT: 3000'/(900)

ASTRAKHAN, RUSSIA
ASTRAKHAN
RWY 27



TOWER **118.600**
RADAR **120.600**
APPROACH **126.000**

- WARNING:**
1. Turn before passing DER is PROHIBITED.
 2. Close-in obstacles located to the left of RWY 27 take-off heading at DIST 5-1400m from DER with MAX ELEV (132')/(41).
 3. The minimum climb gradient required due to obstacles is 3.8% up to 300'/(115).
 4. The minimum climb gradients required due to the airspace structure:
 - 4.2% up to FL120 for BASKO 5F;
 - 5.9% up to FL160 for UP 5F, UP 5Q (for ATS route B945).

BEARINGS AND TRACKS ARE MAGNETIC
ELEVATIONS IN FEET AND METRES
ALTITUDES IN FEET
HEIGHTS IN METRES
DISTANCES IN KILOMETRES

Alt set: -QNH(QFE on req);
-hPa(mm on req).