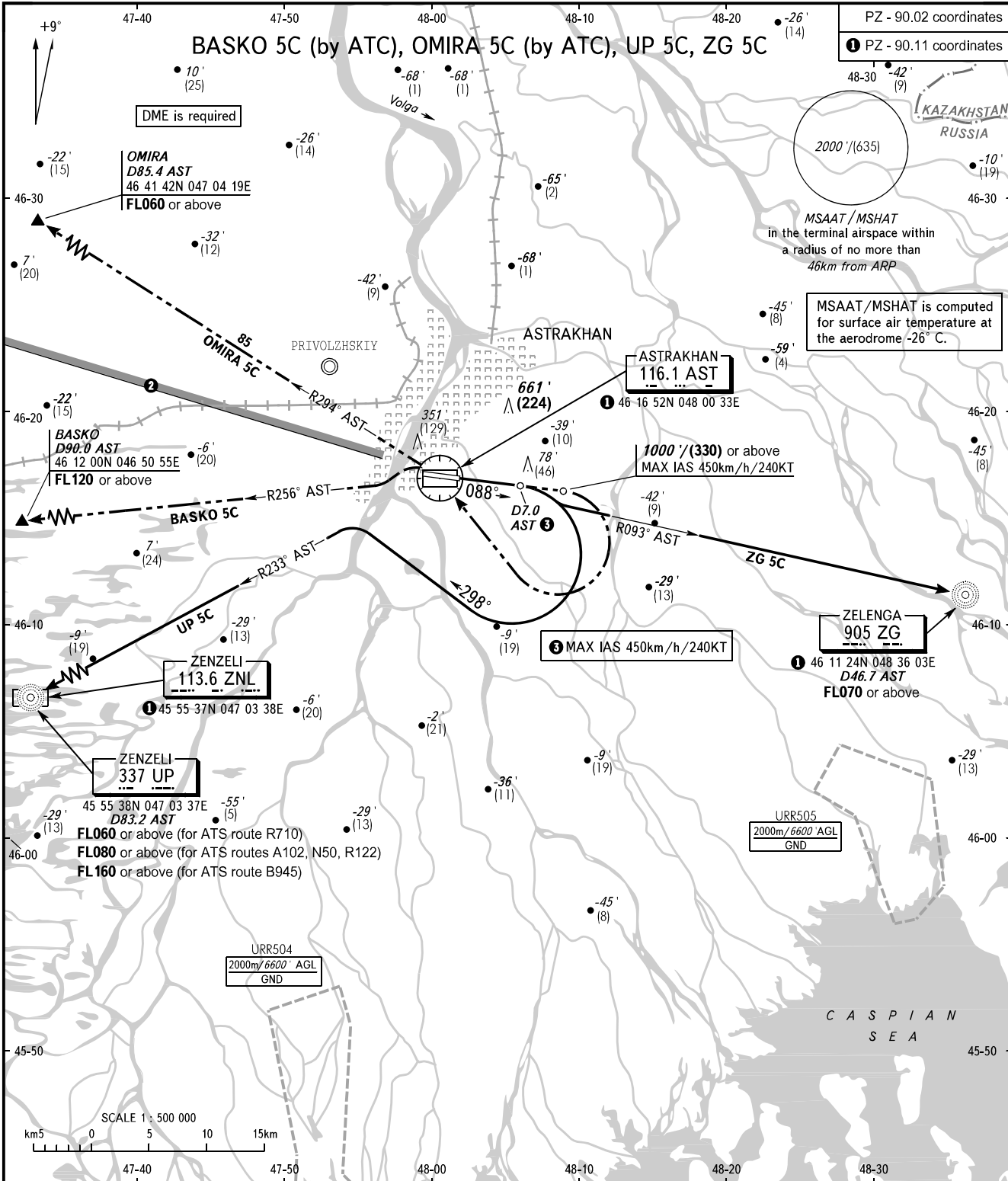


STANDARD DEPARTURE CHART  
INSTRUMENT (SID) - ICAO

TRANSITION  
ALT/HGT: 3000'/(900)

ASTRAKHAN, RUSSIA  
ASTRAKHAN  
RWY 09



TOWER 118.600  
RADAR 120.600  
APPROACH 126.000

ACFT flying to the North of limiting bearing line 279° from ARP at the distance from 5 to 40km at FL200 or below shall be carried out on coordination with ATS unit.

**WARNING:**

1. Turn before passing DER is PROHIBITED.
2. The minimum climb gradients required due to the airspace structure:
  - 4.6% up to FL160 for UP 5C (for ATS route B945);
  - 4.9% up to FL070 for ZG 5C.

BEARINGS AND TRACKS ARE MAGNETIC  
ELEVATIONS IN FEET AND METRES  
ALTITUDES IN FEET  
HEIGHTS IN METRES  
DISTANCES IN KILOMETRES

Alt set: -QNH(QFE on req);  
-hPa(mm on req).