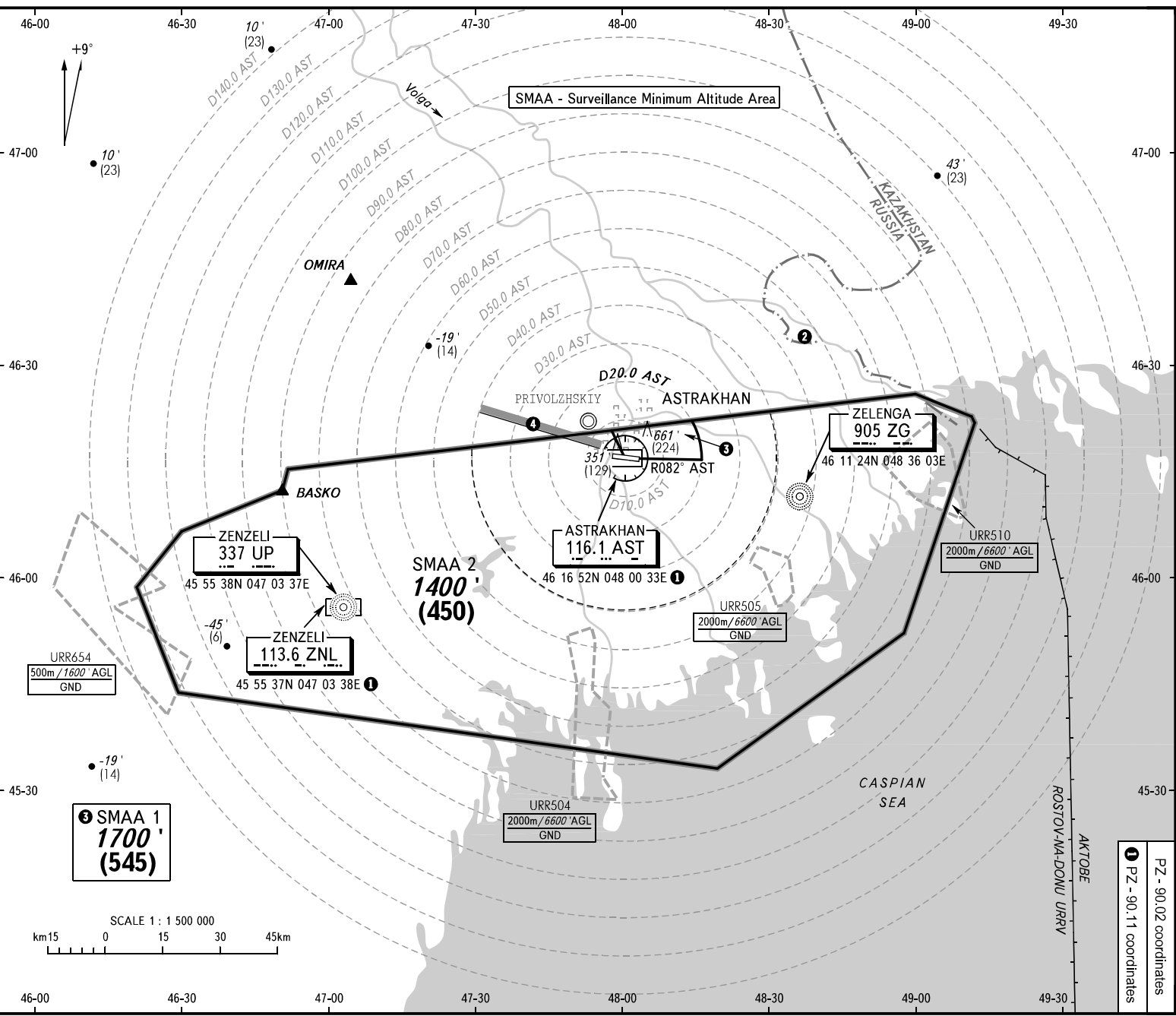


ATC SURVEILLANCE MINIMUM
 ALTITUDE CHART - ICAO

ELEV -65' / 20m
 TRANSITION ALT: 3000'
 TRANSITION HGT: (900)

ASTRAKHAN, RUSSIA
 ASTRAKHAN



APPROACH
 RADAR
 TOWER

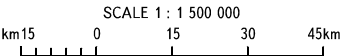
126,000
 120,600
 118,600

BEARINGS AND TRACKS ARE MAGNETIC
 ALTITUDES IN FEET
 HEIGHTS IN METRES
 ELEVATIONS IN FEET AND METRES
 DISTANCES IN KILOMETRES

Alt set: -QNH/QFE (on req);
 -Mpa(m on req).

WARNING:

1. The chart may only be used for cross-checking of altitudes assigned while the aircraft is identified under radar control.
2. When vectoring is carried out in low-temperature conditions, minimum vectoring altitudes for IFR flight must be corrected by altimeter temperature correction.
3. HGT is given relative to RWY 09 THR ELEV -72' / -22m.
4. ROSTOV-NA-DONU FIR boundary coincides with the state border between RUSSIA and KAZAKHSTAN.
5. ACT flying to the North of limiting bearing line 279° from ARP at the distance from 5 to 40km at FL200 or below shall be carried out on coordination with ATIS unit.



ASTRAKHAN, RUSSIA

ASTRAKHAN

SURVEILLANCE MINIMUM ALTITUDE AREAS		
IDENT	MNM ALT HGT (ft/m)	LATERAL LIMITS (PZ-90.11 coordinates)
SMAA 1	1700 (545)	462210N 0481408E, then clockwise by arc of a circle radius of 20 km centred at (461652N 0480033E) to 461639N 0481609E - 461652N 0480033E - 462048N 0475749E - 462210N 0481408E.
SMAA 2	1400 (450)	462541N 0485946E, then along the state border to 462224N 0491112E - 462130N 0491148E - 455200N 0485655E - 453306N 0481906E - 454314N 0463035E - 455800N 0462146E - 460558N 0463036E - 461200N 0465055E - 461500N 0465200E - 462048N 0475749E - 461652N 0480033E - 461639N 0481609E, then anticlockwise by arc of a circle radius of 20 km centred at (461652N 0480033E) to 462210N 0481408E - 462541N 0485946E.

WARNING: HGT is given relative to THR 09 ELEV