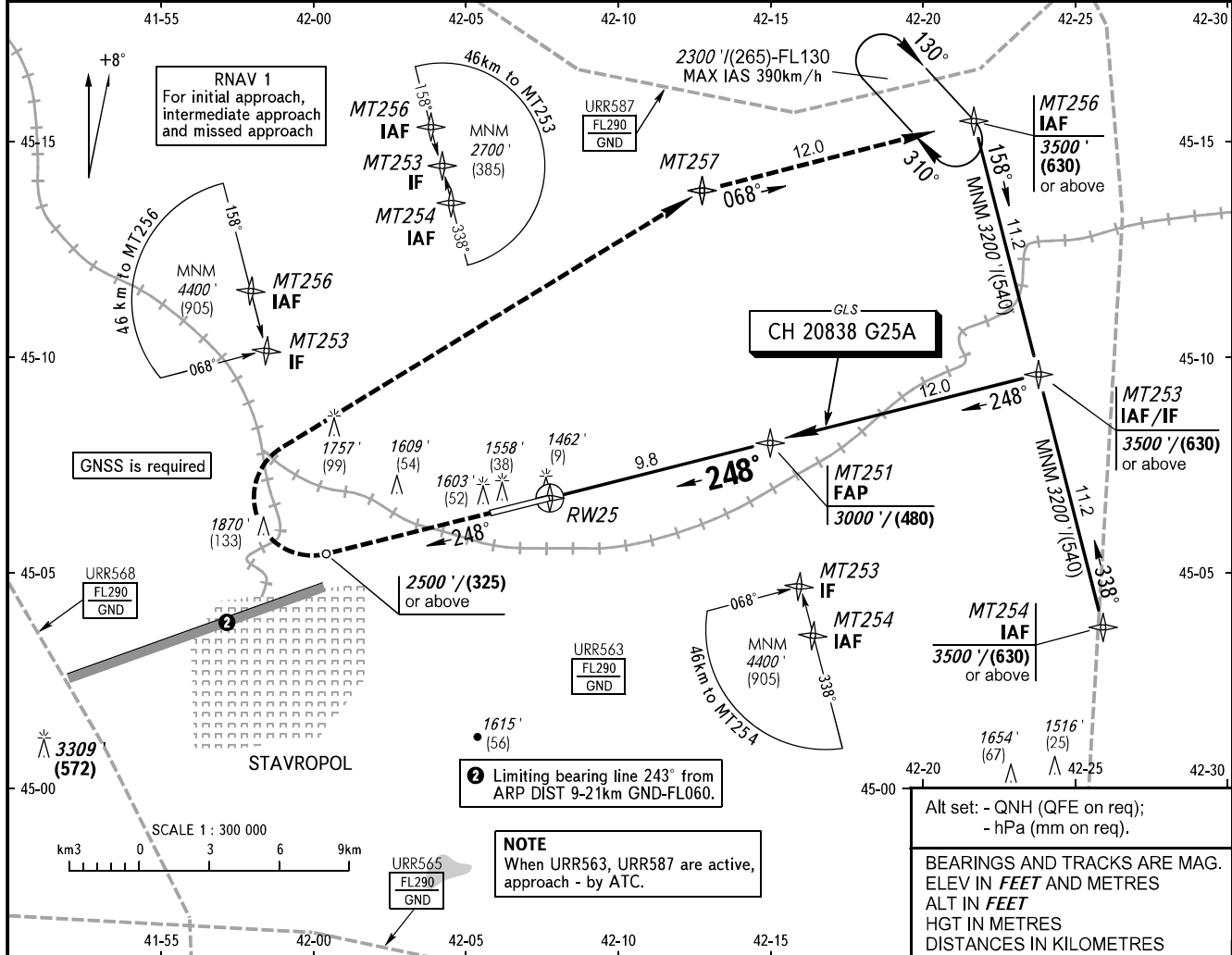


**INSTRUMENT
APPROACH
CHART - ICAO**

STAVROPOL, RUSSIA
SHPAKOVSKOYE
GLS RWY 25

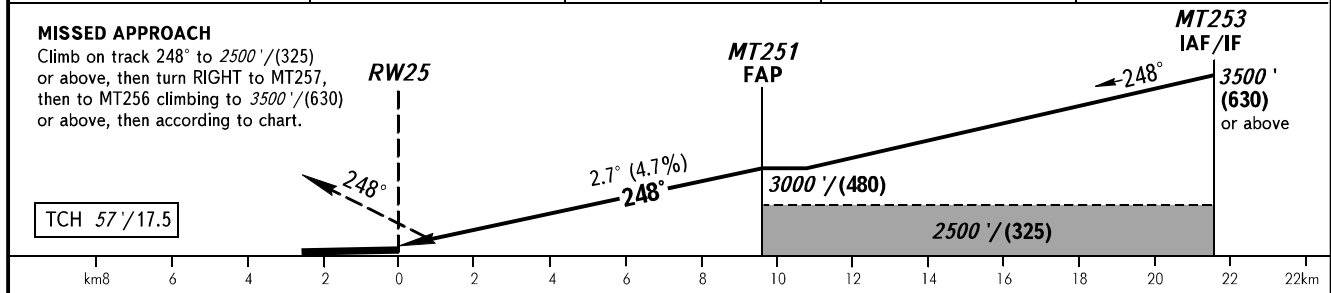
TOWER **120.900**

GBAS CH 20838 G25A
TRANSITION LEVEL: ①
TRANSITION ALTITUDE: 5000' **TRANSITION HEIGHT:** (1090)
AD ELEV: 1486' / 453m
THR ELEV: 1434' / 437.0m



Alt set: - QNH (QFE on req);
- hPa (mm on req).
 BEARINGS AND TRACKS ARE MAG. ELEV IN FEET AND METRES
 ALT IN FEET
 HGT IN METRES
 DISTANCES IN KILOMETRES

DIST to RW25	2.0	4.0	6.0	8.0
ALTITUDE/HEIGHT	1780' / (105)	2110' / (210)	2410' / (300)	2720' / (395)



OCA(H)		A	B	C	D	① TRANSITION LEVEL:					
Straight-in Approach		1587' (153') (47)	1599' (166') (51)	1612' (179') (54)	1623' (189') (58)	- FL060 when QNH is 1013 hPa (760mm mercury column) or above;					
						- FL070 when QNH is 977 hPa (733mm mercury column) or above, but less than 1013 hPa (760mm mercury column);					
	Circling	1940' (450') (140)	1980' (500') (155)	2150' (670') (205)	2270' (780') (240)	- FL080 when QNH is less than 977 hPa (733mm mercury column).					
GROUND SPEED		km/h	150	180	210	240	270	300	330	360	390
RATE OF DESCENT		m/s	1.9	2.3	2.7	3.1	3.5	3.9	4.3	4.7	5.0
		ft/min	385	463	540	617	694	771	848	925	1002