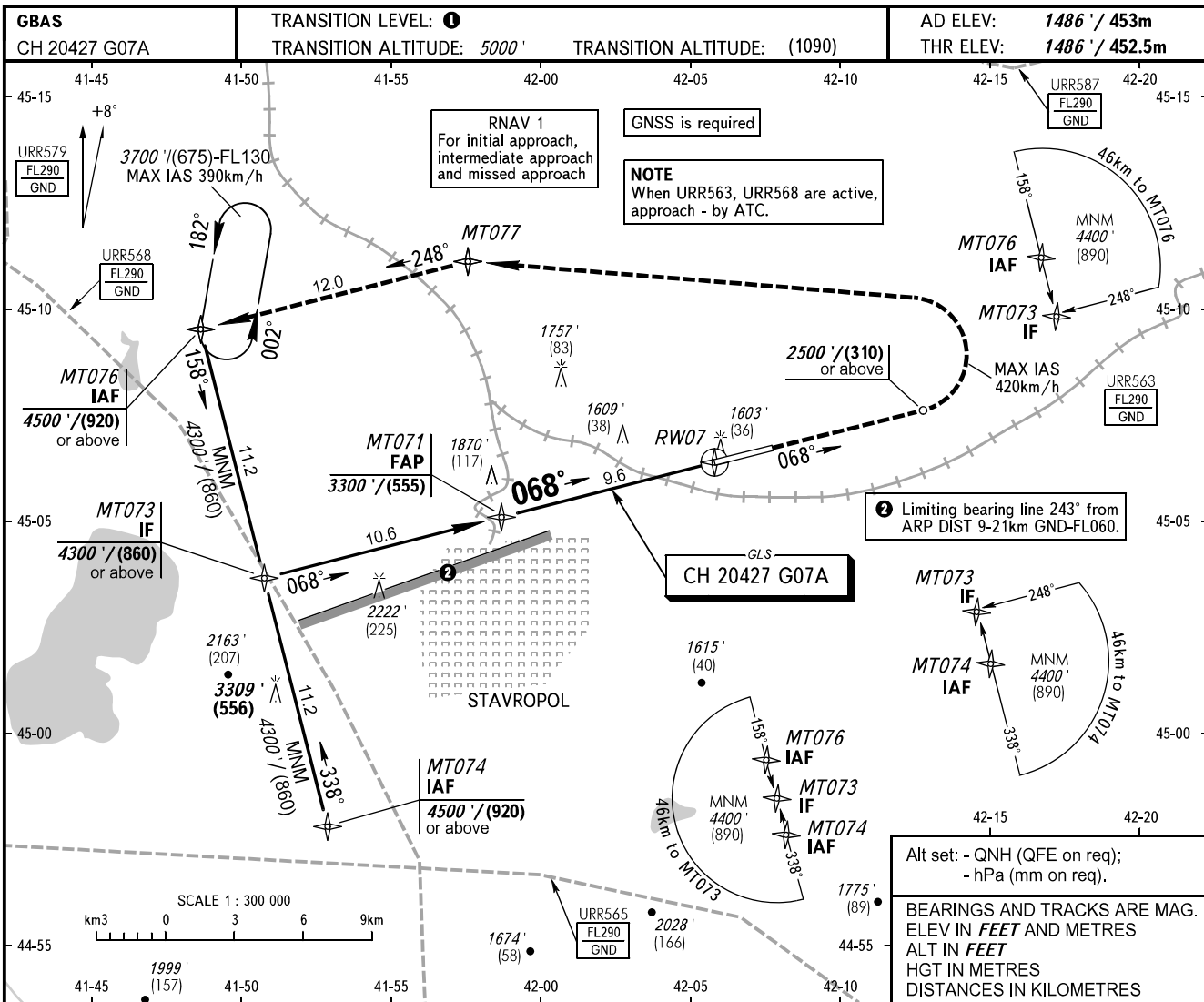


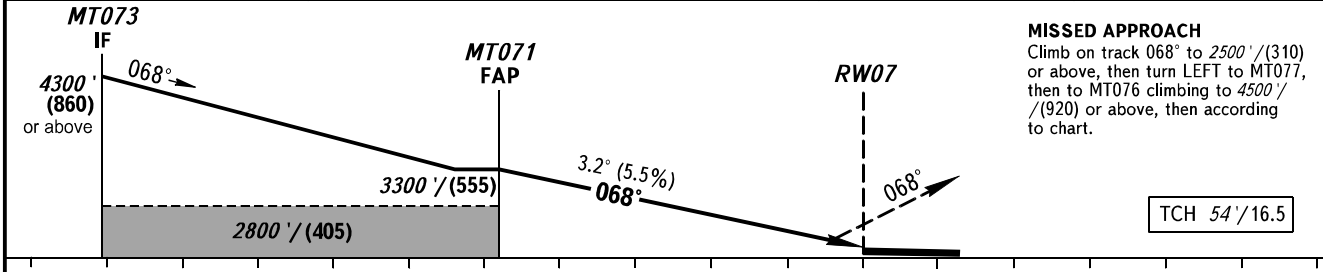
**INSTRUMENT
APPROACH
CHART - ICAO**

TOWER **120.900**

STAVROPOL, RUSSIA
SHPAKOVSKOYE
GLS RWY 07



| | | | | |
|-----------------|---------------|---------------|---------------|---------------|
| DIST to RW07 | 8.0 | 6.0 | 4.0 | 2.0 |
| ALTITUDE/HEIGHT | 2940' / (445) | 2580' / (335) | 2220' / (225) | 1860' / (115) |



| OCA(H) | | A | B | C | D | | | | | |
|----------------------|----------|-----------------------|-----------------------|-----------------------|-----------------------|-----|-----|-----|------|------|
| Straight-in Approach | | 1652' (167') (51) | 1665' (179') (55) | 1673' (187') (57) | 1683' (198') (60) | | | | | |
| | Circling | 1940' (450') (140) | 1980' (500') (155) | 2150' (670') (205) | 2270' (780') (240) | | | | | |
| GROUND SPEED | km/h | 150 | 180 | 210 | 240 | 270 | 300 | 330 | 360 | 390 |
| RATE OF DESCENT | m/s | 2.3 | 2.8 | 3.2 | 3.7 | 4.1 | 4.6 | 5.1 | 5.5 | 6.0 |
| | ft/min | 451 | 541 | 632 | 722 | 812 | 902 | 992 | 1082 | 1173 |

1 TRANSITION LEVEL:
 - FL060 when QNH is 1013 hPa (760mm mercury column) or above;
 - FL070 when QNH is 977 hPa (733mm mercury column) or above, but less than 1013 hPa (760mm mercury column);
 - FL080 when QNH is less than 977 hPa (733mm mercury column).

Alt set: - QNH (QFE on req);
 - hPa (mm on req).
 BEARINGS AND TRACKS ARE MAG.
 ELEV IN FEET AND METRES
 ALT IN FEET
 HGT IN METRES
 DISTANCES IN KILOMETRES

CHANGE: Heading, HGT