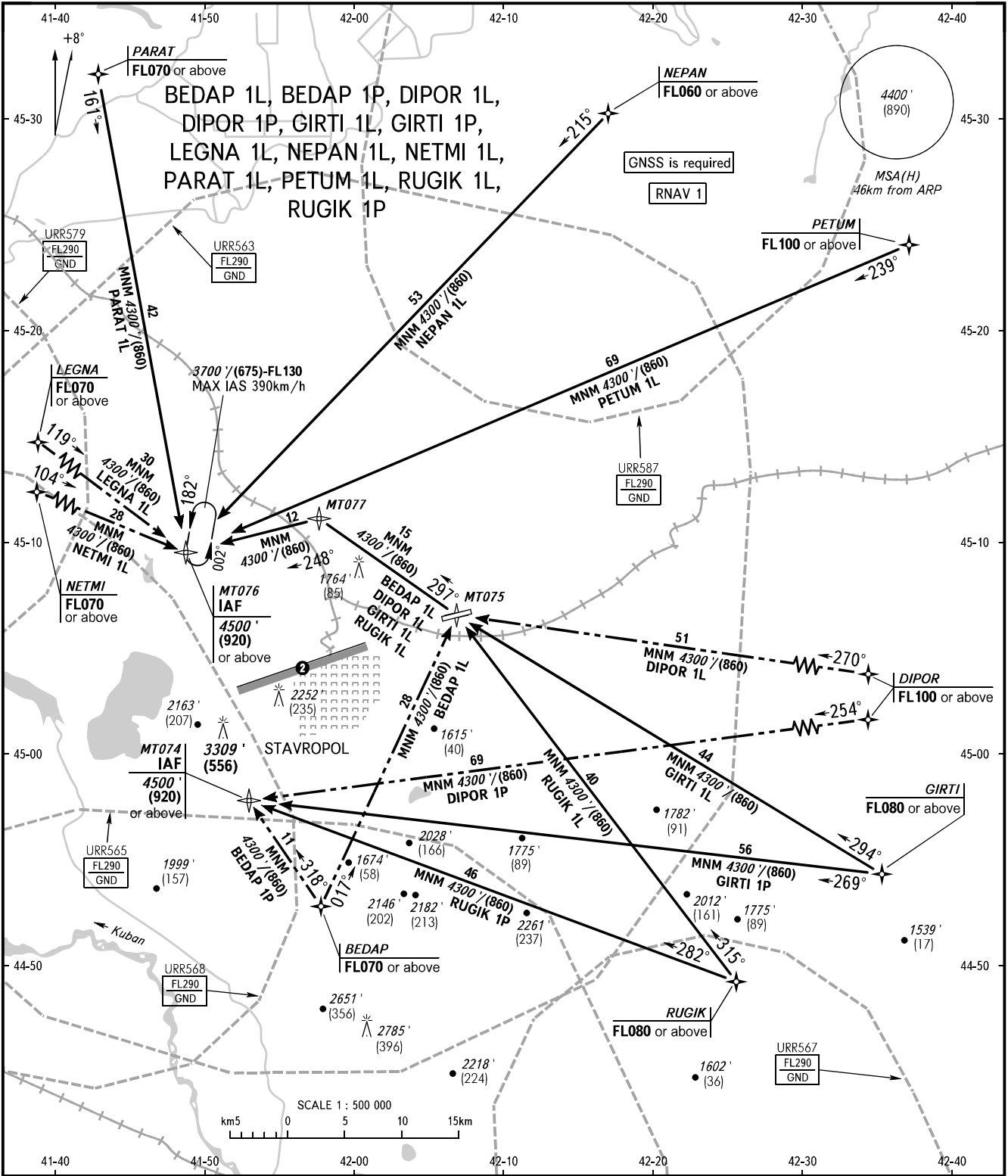


STANDARD ARRIVAL CHART  
INSTRUMENT (STAR) - ICAO

STAVROPOL, RUSSIA  
SHPAKOVSKOYE  
RNAV RWY 07

TRANSITION  
LEVEL: **1**



APPROACH TOWER **121.050**  
**120.900**

- 1** TRANSITION LEVEL:
- FL060 when QNH is 1013 hPa (760mm mercury column) or above;
  - FL070 when QNH is 977 hPa (733mm mercury column) or above, but less than 1013 hPa (760mm mercury column);
  - FL080 when QNH is less than 977 hPa (733mm mercury column).

**2** Limiting bearing line 243° from ARP  
DIST 9-21km GND-FL060.

BEARINGS AND TRACKS ARE MAGNETIC  
ALTITUDES IN FEET  
HEIGHTS IN METRES  
ELEVATIONS IN FEET AND METRES  
DISTANCES IN KILOMETRES

Alt set: - QNH (QFE on req);  
- hPa (mm on req).

CHANGE: Heading, HGT, DIST