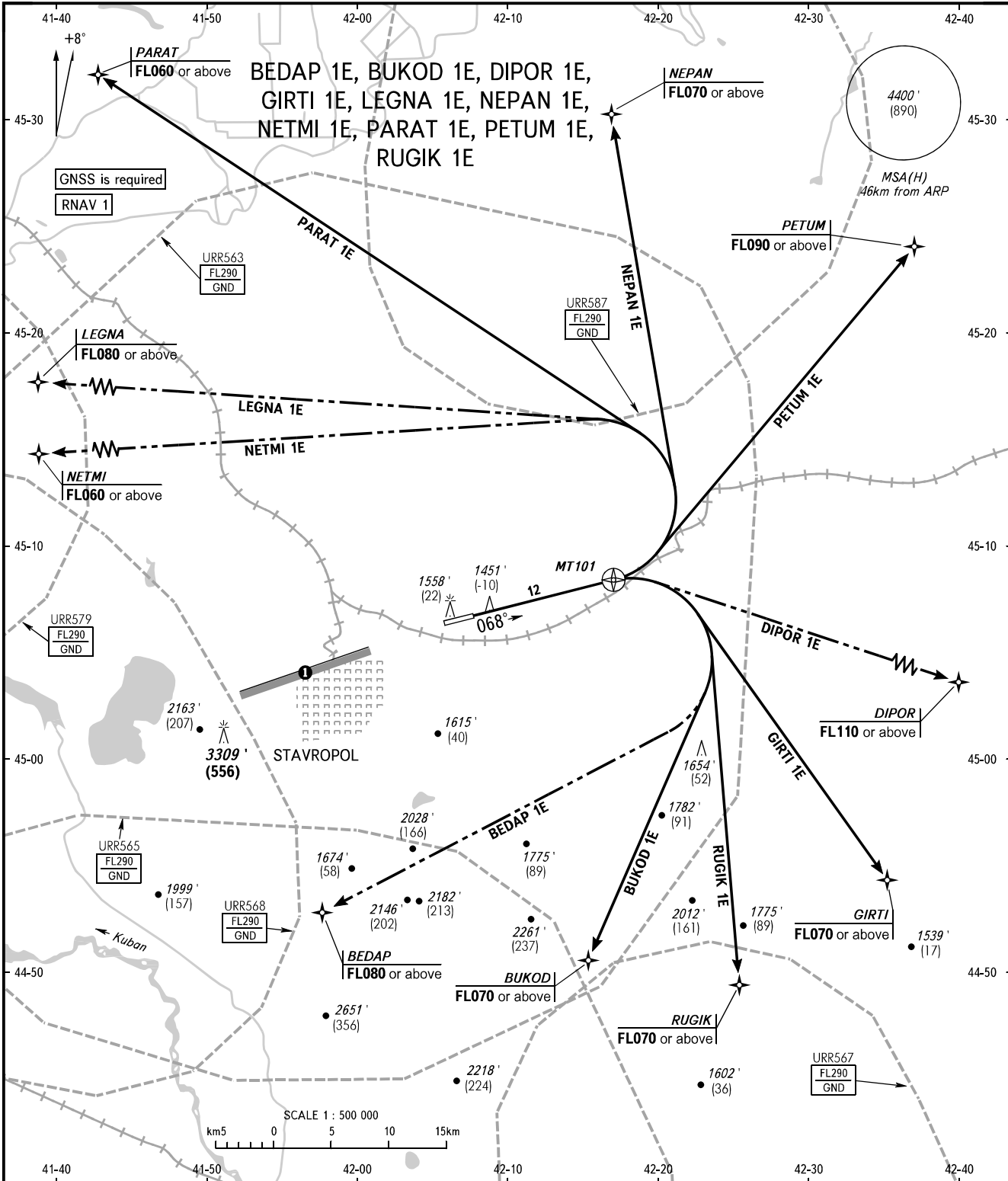


STANDARD DEPARTURE CHART
INSTRUMENT (SID) - ICAO

TRANSITION ALTITUDE: 5000'
TRANSITION HEIGHT: (1090)

STAVROPOL, RUSSIA
SHPAKOVSKOYE
RNAV RWY 07



TOWER APPROACH 120.900
121.050

① Limiting bearing line 243° from ARP
DIST 9-21km GND-FL060.

WARNING
The minimum climb gradients are as follows
(required due to the airspace structure):
- 4.1% up to FL090 for SID PETUM 1E;
- 5.2% up to FL110 for SID DIPOR 1E.

BEARINGS AND TRACKS ARE MAGNETIC
ALTITUDES IN FEET
HEIGHTS IN METRES
ELEVATIONS IN FEET AND METRES
DISTANCES IN KILOMETRES

Alt set: - QNH (QFE on req);
- hPa (mm on req).

CHANGE: Heading, HGT, DIST