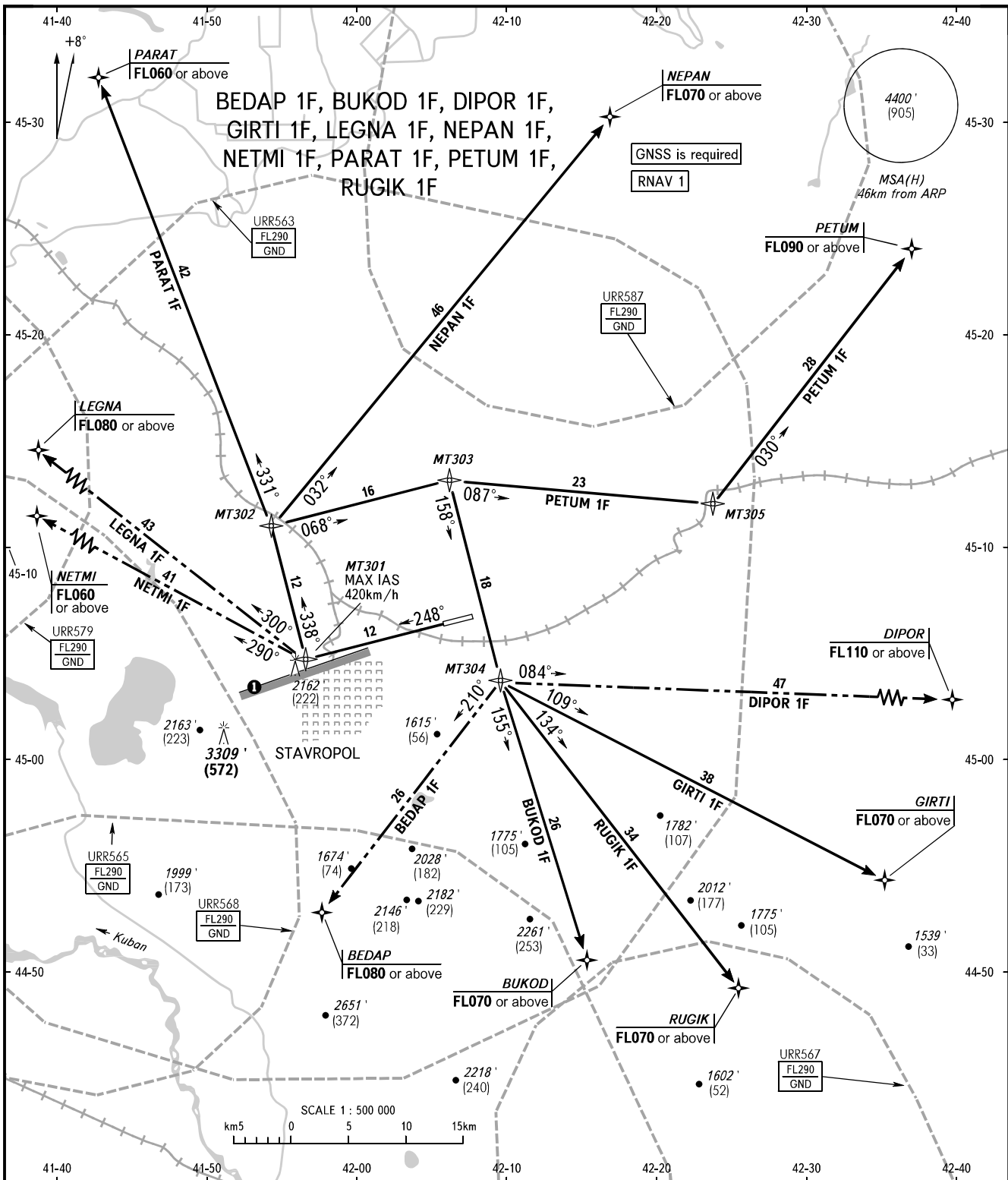


STANDARD DEPARTURE CHART  
INSTRUMENT (SID) - ICAO

TRANSITION ALTITUDE: 5000'  
TRANSITION HEIGHT: (1090)

STAVROPOL, RUSSIA  
SHPAKOVSKOYE  
RNAV RWY 25



TOWER 120.900  
APPROACH 121.050

① Limiting bearing line 243° from ARP  
DIST 9-21km GND-FL060.

BEARINGS AND TRACKS ARE MAGNETIC  
ALTITUDES IN FEET  
HEIGHTS IN METRES  
ELEVATIONS IN FEET AND METRES  
DISTANCES IN KILOMETRES

Alt set: - QNH (QFE on req);  
- hPa (mm on req).