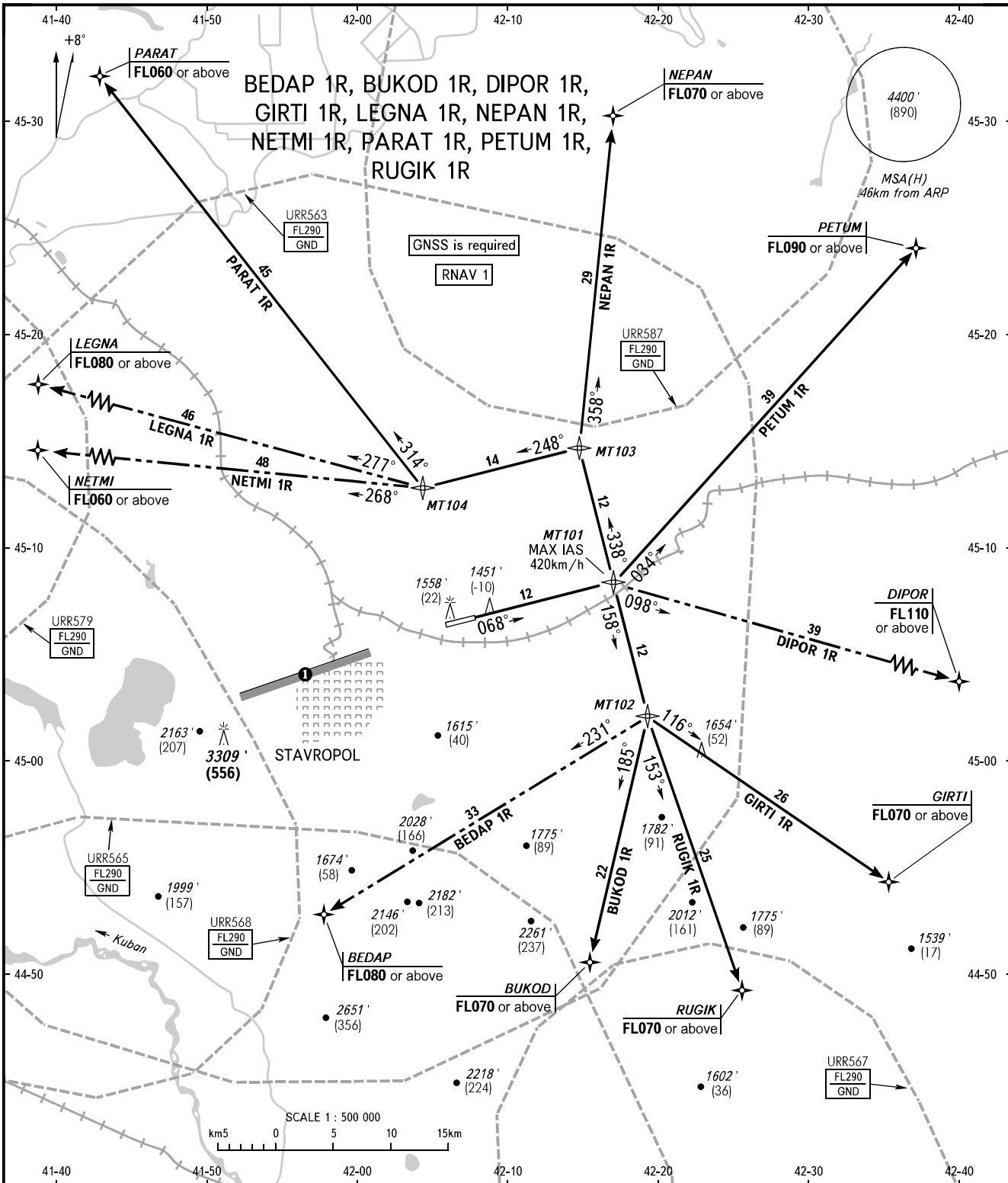


STANDARD DEPARTURE CHART  
INSTRUMENT (SID) - ICAO

TRANSITION ALTITUDE: 5000'  
TRANSITION HEIGHT: (1090)

STAVROPOL, RUSSIA  
SHPAKOVSKOYE  
RNAV RWY 07



TOWER APPROACH 120.900  
121.050

① Limiting bearing line 243° from ARP  
DIST 9-21km GND-FL060.

**WARNING**  
The minimum climb gradients are as follows (required due to the airspace structure):  
- 3.4% up to FL070 for SID GIRTI 1R;  
- 3.5% up to FL070 for SID BUKOD 1R;  
- 3.7% up to FL070 for SID RUGIK 1R;  
- 4.6% up to FL090 for SID PETUM 1R;  
- 5.8% up to FL110 for SID DIPOR 1R.

BEARINGS AND TRACKS ARE MAGNETIC  
ALTITUDES IN FEET  
HEIGHTS IN METRES  
ELEVATIONS IN FEET AND METRES  
DISTANCES IN KILOMETRES

Alt set: - QNH (QFE on req);  
- hPa (mm on req).

CHANGE: Heading, HGT, DIST