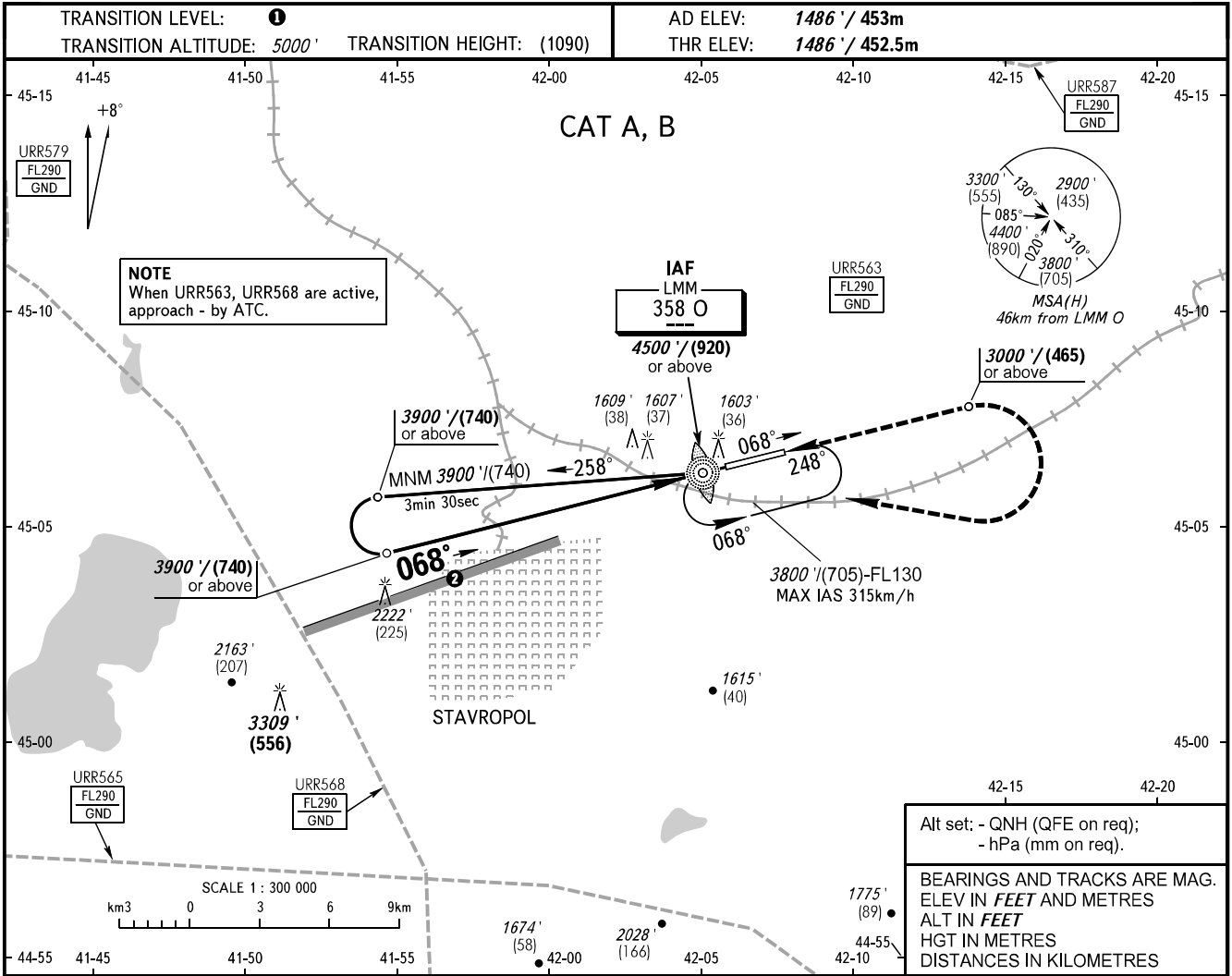


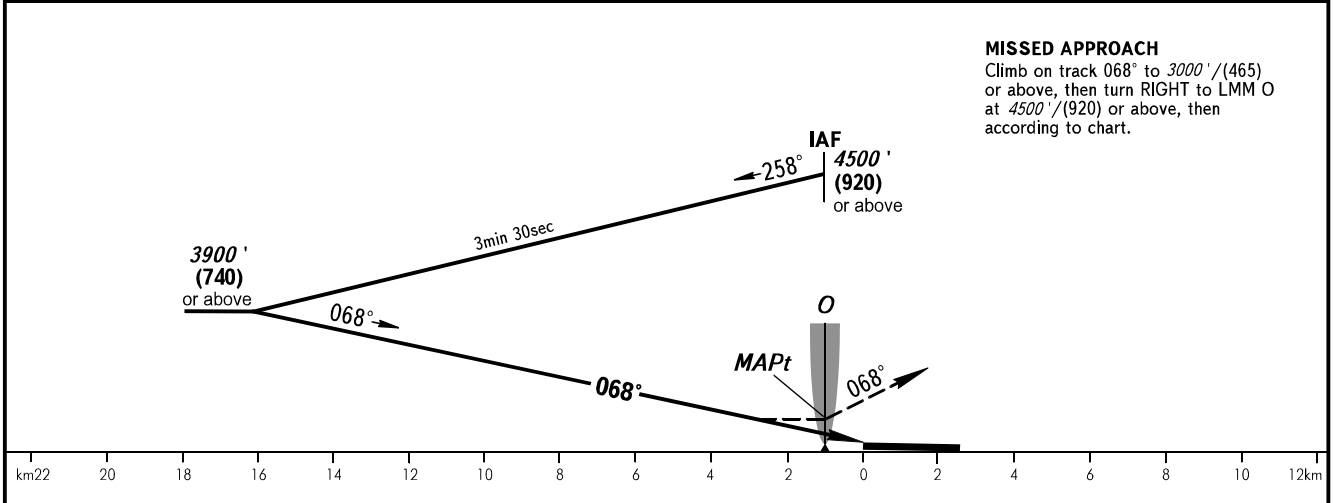
**INSTRUMENT
APPROACH
CHART - ICAO**

**STAVROPOL, RUSSIA
SHPAKOVSKOYE
NDB U RWY 07**

TOWER **120.900**



MISSED APPROACH
Climb on track 068° to 3000' / (465) or above, then turn RIGHT to LMM O at 4500' / (920) or above, then according to chart.



OCA(H)		A	B	C	D
Straight-in Approach		2520' (1030') (315)	2520' (1030') (315)		
Circling		2520' (1030') (315)	2520' (1030') (315)		

- ① **TRANSITION LEVEL:**
- FL060 when QNH is 1013 hPa (760mm mercury column) or above;
 - FL070 when QNH is 977 hPa (733mm mercury column) or above, but less than 1013 hPa (760mm mercury column);
 - FL080 when QNH is less than 977 hPa (733mm mercury column).

CHANGE: Heading, HGT