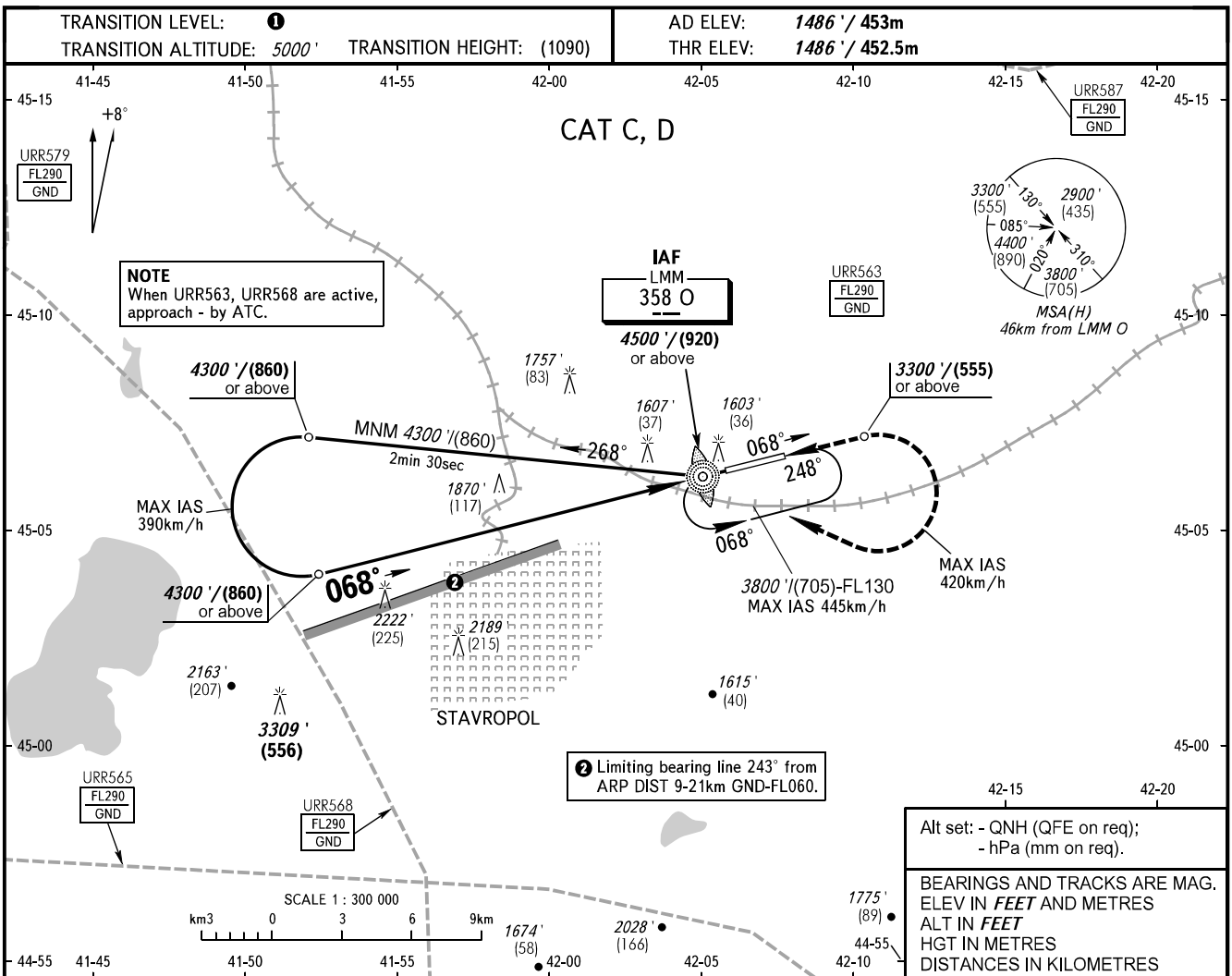


**INSTRUMENT  
APPROACH  
CHART - ICAO**

TOWER **120.900**

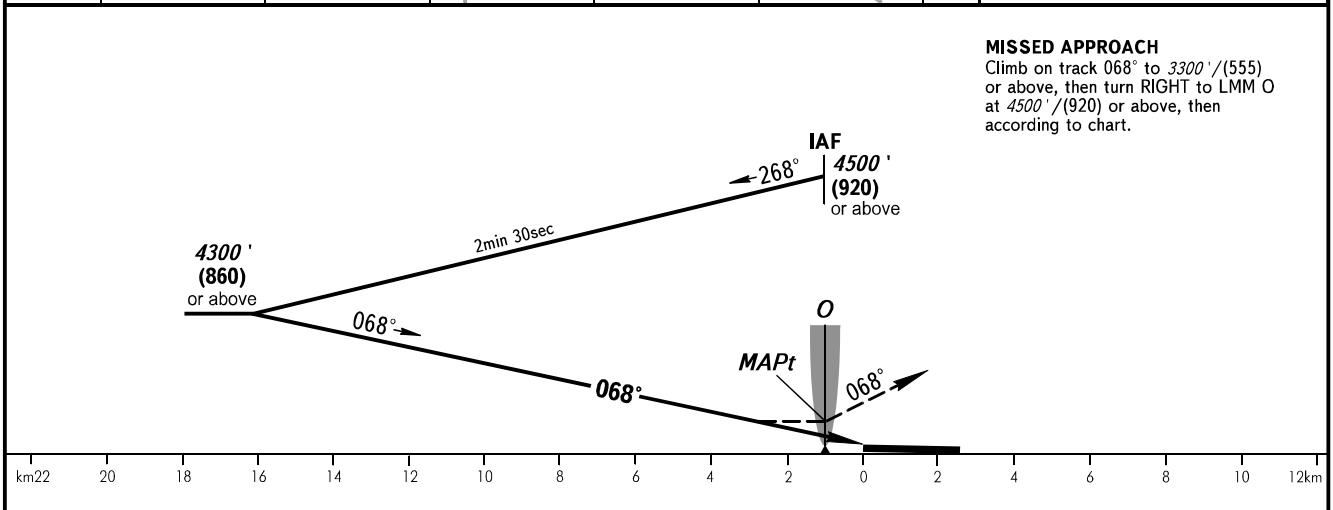
**STAVROPOL, RUSSIA**  
SHPAKOVSKOYE  
NDB V RWY 07



Alt set: - QNH (QFE on req);  
- hPa (mm on req).

BEARINGS AND TRACKS ARE MAG.  
ELEV IN FEET AND METRES  
ALT IN FEET  
HGT IN METRES  
DISTANCES IN KILOMETRES

**MISSED APPROACH**  
Climb on track 068° to 3300' / (555) or above, then turn RIGHT to LMM O at 4500' / (920) or above, then according to chart.



OCA(H)		A	B	C	D
Straight-in Approach				2520' (1030') (315)	2520' (1030') (315)
Circling				2520' (1030') (315)	2520' (1030') (315)

**1 TRANSITION LEVEL:**  
- FL060 when QNH is 1013 hPa (760mm mercury column) or above;  
- FL070 when QNH is 977 hPa (733mm mercury column) or above, but less than 1013 hPa (760mm mercury column);  
- FL080 when QNH is less than 977 hPa (733mm mercury column).