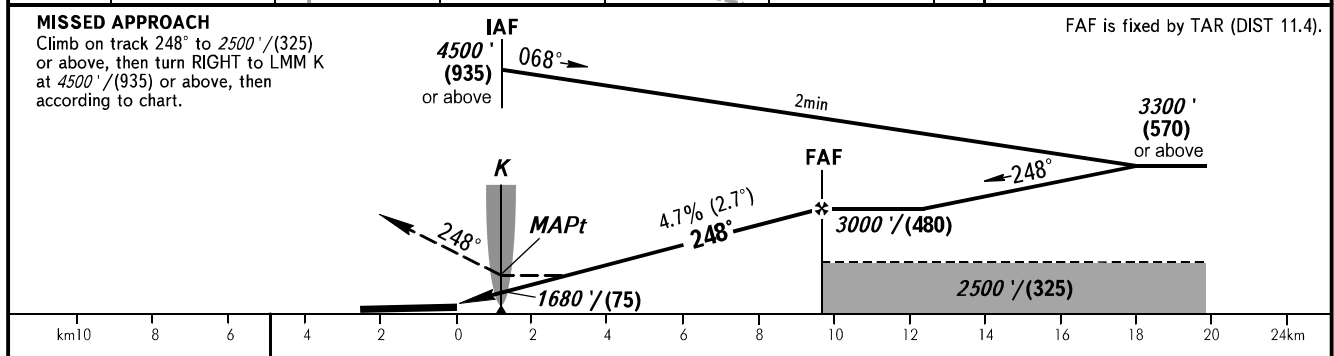
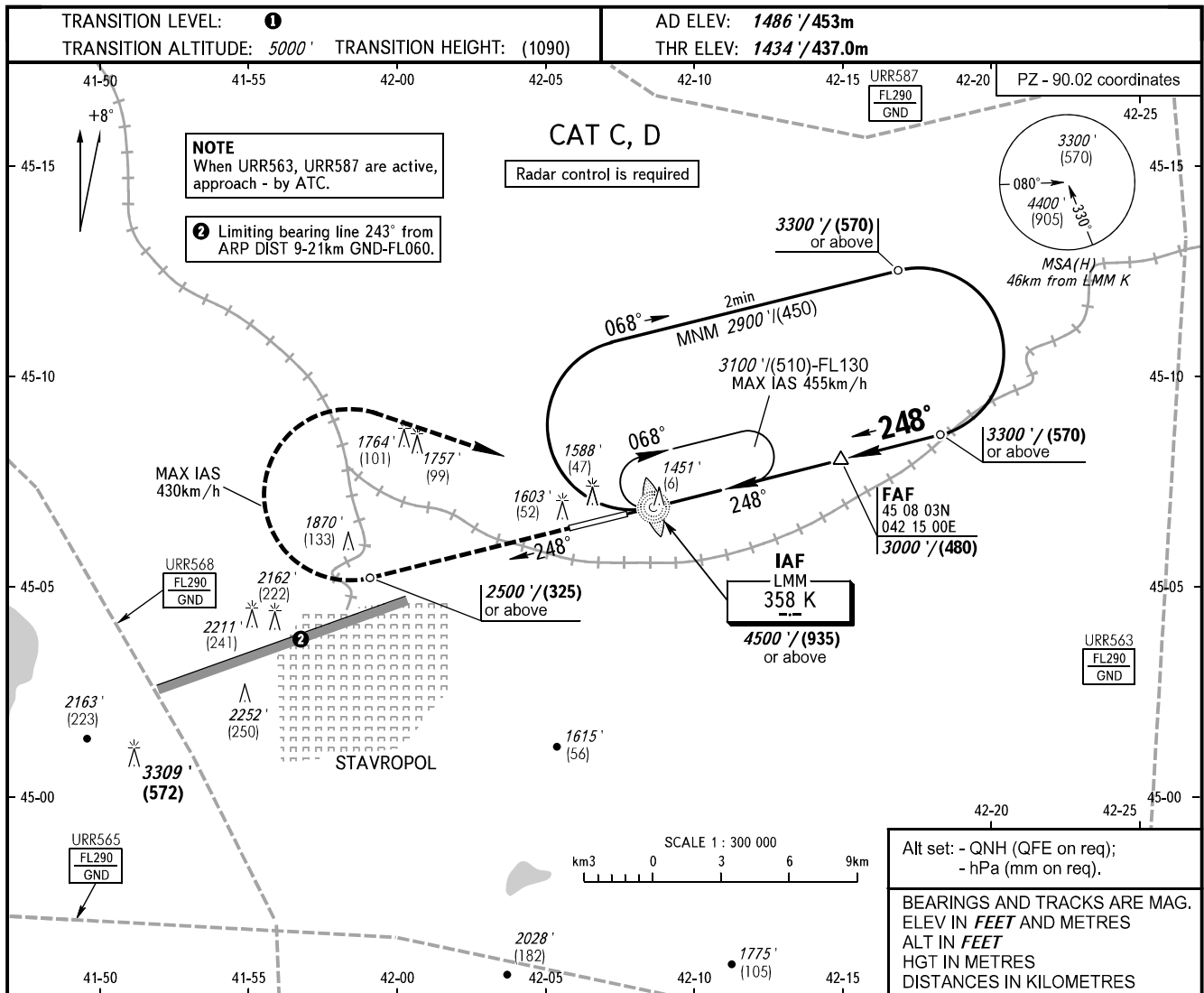


**INSTRUMENT  
APPROACH  
CHART - ICAO**

TOWER **120.900**

**STAVROPOL, RUSSIA**  
SHPAKOVSKOYE  
NDB X RWY 25



OCA(H)		A	B	C	D						
Straight-in Approach				1700' (263') (85)	1700' (263') (85)						
Circling				2150' (670') (205)	2270' (780') (240)						
GROUND SPEED		km/h	150	180	210	240	270	300	330	360	390
RATE OF DESCENT		m/s	1.9	2.3	2.7	3.1	3.5	3.9	4.3	4.7	5.0
		ft/min	385	463	540	617	694	771	848	925	1002

**① TRANSITION LEVEL:**  
- FL060 when QNH is 1013 hPa (760mm mercury column) or above;  
- FL070 when QNH is 977 hPa (733mm mercury column) or above, but less than 1013 hPa (760mm mercury column);  
- FL080 when QNH is less than 977 hPa (733mm mercury column).

**WARNING**  
MAPt at LMM K. Timing not authorized for defining MAPt.

CHANGE: Heading, HGT