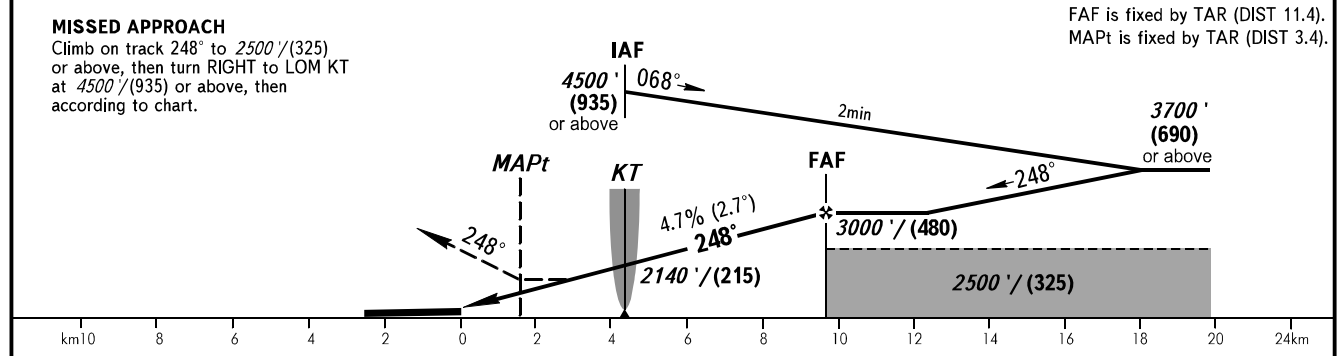
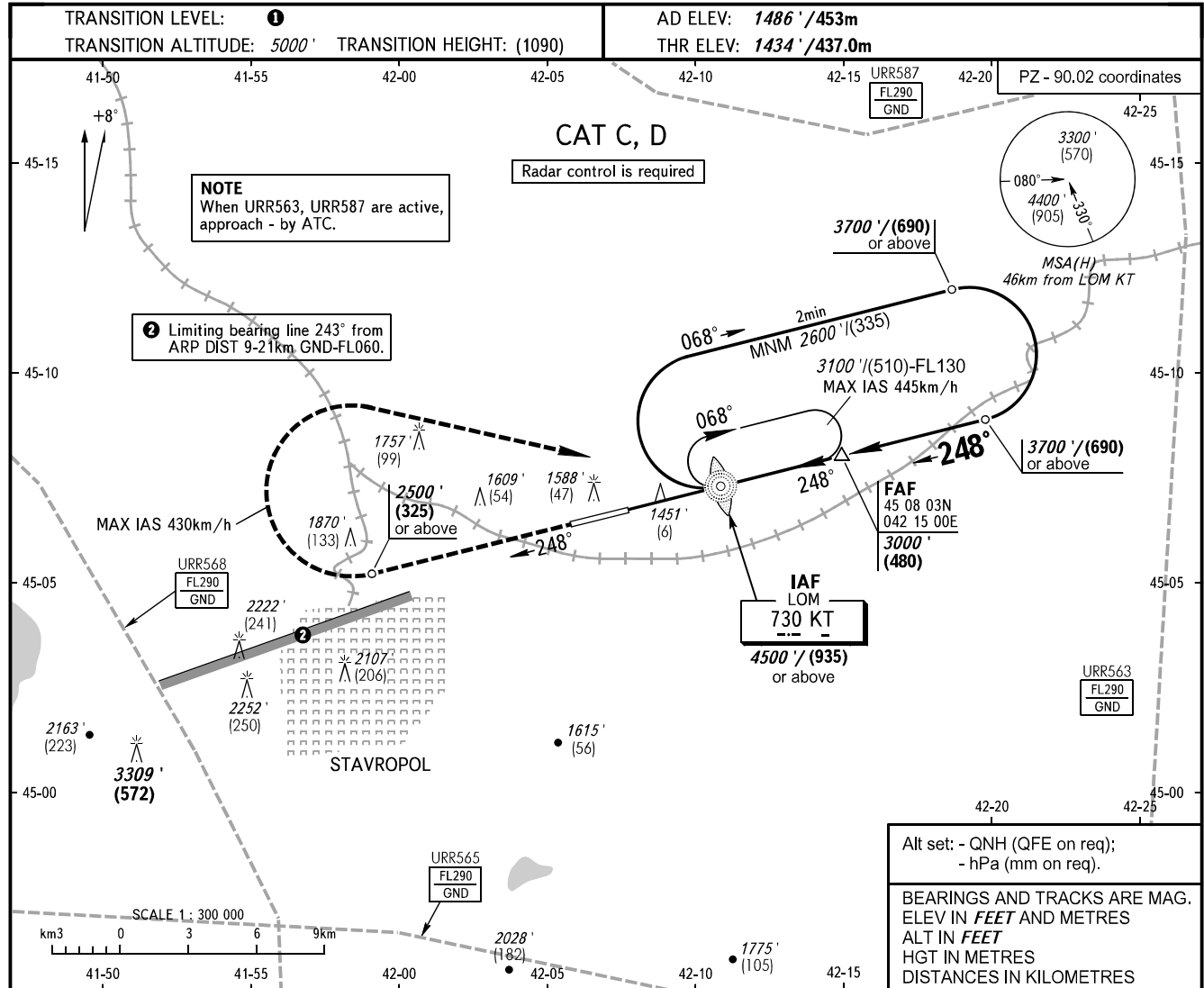


**INSTRUMENT  
APPROACH  
CHART - ICAO**

**STAVROPOL, RUSSIA  
SHPAKOVSKOYE  
NDB Z RWY 25**

TOWER **120.900**



OCA(H)		A	B	C	D						
Straight-in Approach				1770' (335') (105)	1770' (335') (105)						
Circling				2150' (670') (205)	2270' (780') (240)						
GROUND SPEED	km/h		150	180	210	240	270	300	330	360	390
FAF - MAPt 8000m	min:sec		3:11	2:40	2:17	1:59	1:46	1:35	1:27	1:20	1:13
RATE OF DESCENT	m/s		1.9	2.3	2.7	3.1	3.5	3.9	4.3	4.7	5.0
	ft/min		385	463	540	617	694	771	848	925	1002

**1** TRANSITION LEVEL:  
 - FL060 when QNH is 1013 hPa (760mm mercury column) or above;  
 - FL070 when QNH is 977 hPa (733mm mercury column) or above, but less than 1013 hPa (760mm mercury column);  
 - FL080 when QNH is less than 977 hPa (733mm mercury column).

CHANGE: Heading, HGT