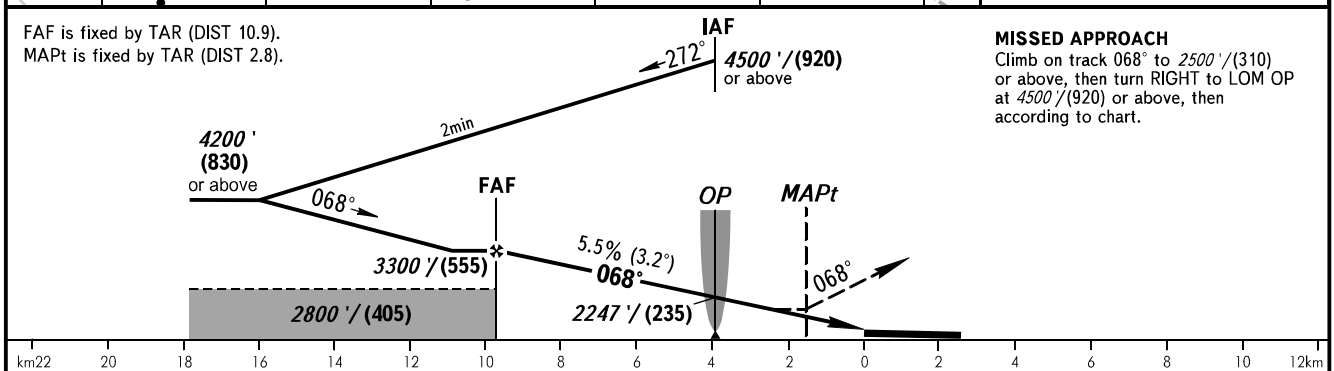


STAVROPOL, RUSSIA
SHPAKOVSKOYE
NDB Z RWY 07



OCA(H)		A	B	C		D		① TRANSITION LEVEL: - FL060 when QNH is 1013 hPa (760mm mercury column) or above; - FL070 when QNH is 977 hPa (733mm mercury column) or above, but less than 1013 hPa (760mm mercury column); - FL080 when QNH is less than 977 hPa (733mm mercury column).					
Straight-in Approach				1860' (370') (115)		1860' (370') (115)							
Circling				2150' (670') (205)		2270' (780') (240)							
GROUND SPEED		km/h		150	180	210	240	270	300	330	360	390	
FAF - MAPt 8080m		min:sec		3:13	2:41	2:18	2:01	1:47	1:36	1:28	1:20	1:13	
RATE OF DESCENT		m/s		2.3	2.8	3.2	3.7	4.1	4.6	5.1	5.5	6.0	
		ft / min		451	541	632	722	812	902	992	1082	1173	