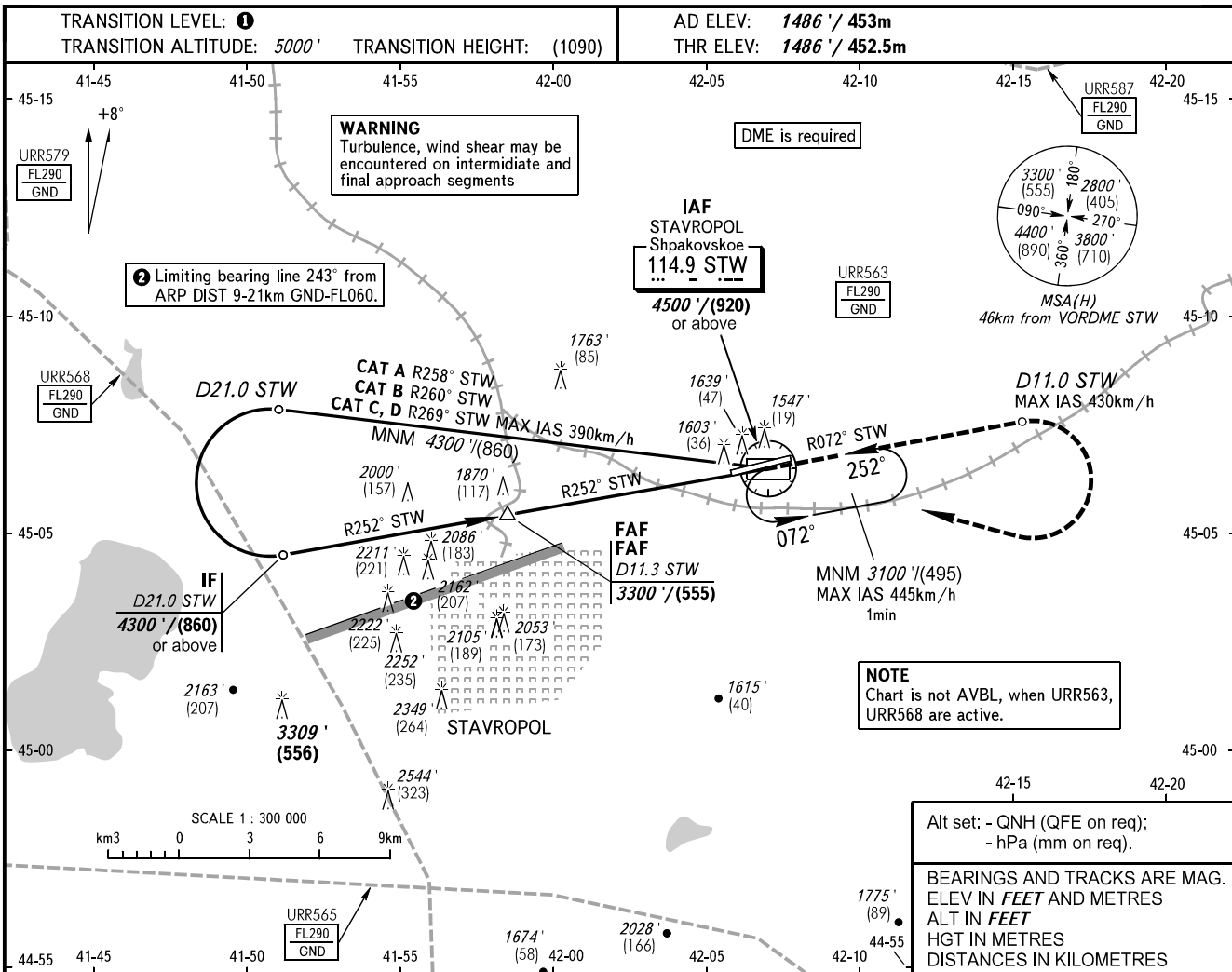


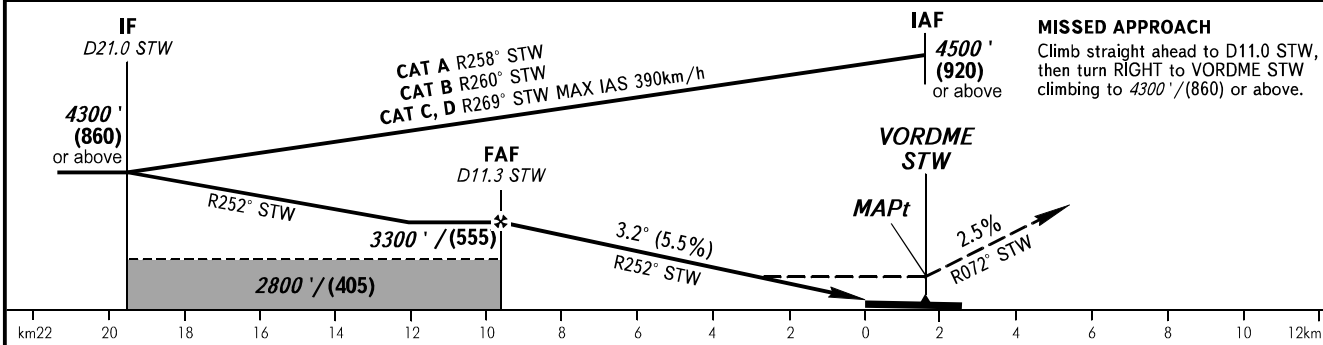
**INSTRUMENT
APPROACH
CHART - ICAO**

TOWER **120.900**

**STAVROPOL, RUSSIA
SHPAKOVSKOYE
VOR RWY 07**



DME IOP	11.3	10.0	8.0	6.0	4.0
ALTITUDE/HEIGHT	3300' / (555)	3060' / (480)	2700' / (370)	2340' / (265)	1980' / (155)



OCA(H)	A	B	C	D
Straight-in Approach	1900' (420') (130)	1900' (420') (130)	1900' (420') (130)	1900' (420') (130)
Circling	1940' (450') (140)	1980' (500') (155)	2150' (670') (205)	2270' (780') (240)

1 TRANSITION LEVEL:
 - FL060 when QNH is 1013 hPa (760mm mercury column) or above;
 - FL070 when QNH is 977 hPa (733mm mercury column) or above, but less than 1013 hPa (760mm mercury column);
 - FL080 when QNH is less than 977 hPa (733mm mercury column).

WARNING:
 1. Final approach track is offset by 4° from the RWY centre line.
 2. MAPt at VORDME STW. Timing not authorized for defining MAPt.
 3. STAR PARAT 1S, BEDAP 1S, NETMI 1S, LEGNA 1S - pass IAF at FL060 or above.

GROUND SPEED	km/h	150	180	210	240	270	300	330	360	390
RATE OF DESCENT	m/s	2.3	2.8	3.2	3.7	4.1	4.6	5.1	5.5	6.0
	ft/min	451	541	632	722	812	902	992	1082	1173

CHANGE: Heading, HGT