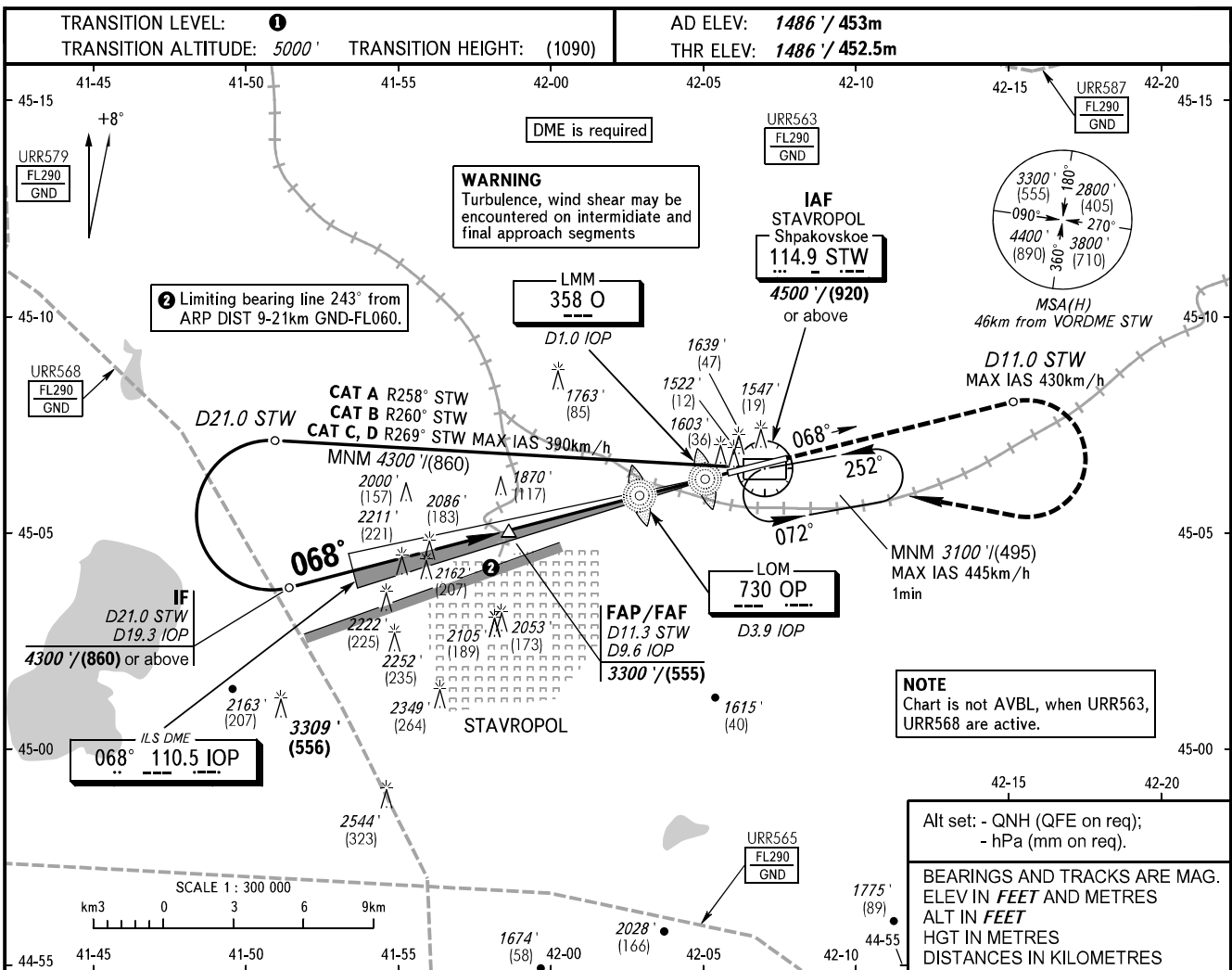


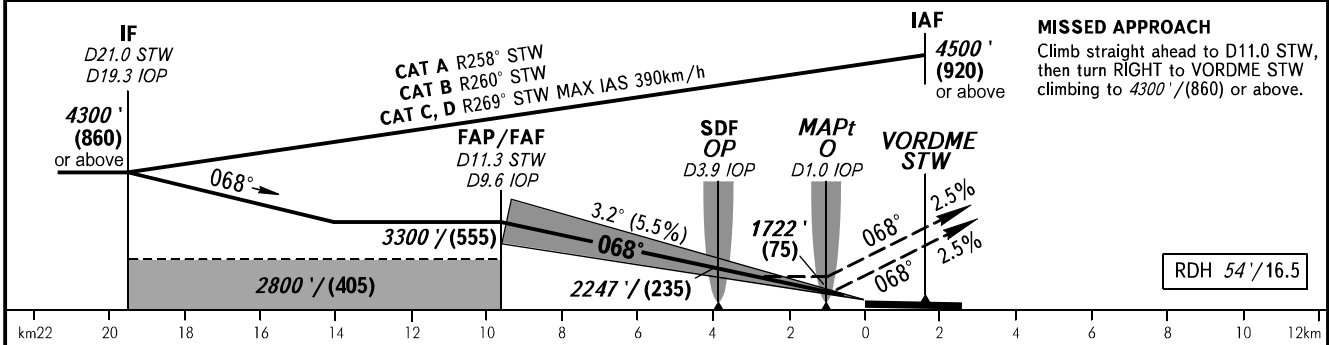
**INSTRUMENT
APPROACH
CHART - ICAO**

TOWER **120.900**

STAVROPOL, RUSSIA
SHPAKOVSKOYE
ILS U CAT I, LOC U RWY 07



DME IOP	9.6	8.0	6.0	4.0	2.0
ALTITUDE/HEIGHT	3300' / (555)	2990' / (460)	2630' / (350)	2270' / (240)	1910' / (130)



OCA(H)		A	B	C	D						
Straight-in Approach	CAT I	1652' (167') (51)	1665' (179') (55)	1673' (187') (57)	1683' (198') (60)						
	LOC With SDF	1810' (320') (100)	1810' (320') (100)	1810' (320') (100)	1810' (320') (100)						
	LOC WO SDF	1890' (400') (125)	1890' (400') (125)	1890' (400') (125)	1890' (400') (125)						
Circling		1940' (450') (140)	1980' (500') (155)	2150' (670') (205)	2270' (780') (240)						
GROUND SPEED		km/h	150	180	210	240	270	300	330	360	390
RATE OF DESCENT		m/s	2.3	2.8	3.2	3.7	4.1	4.6	5.1	5.5	6.0
		ft / min	451	541	632	722	812	902	992	1082	1173

① TRANSITION LEVEL:
- FL060 when QNH is 1013 hPa (760mm mercury column) or above;
- FL070 when QNH is 977 hPa (733mm mercury column) or above, but less than 1013 hPa (760mm mercury column);
- FL080 when QNH is less than 977 hPa (733mm mercury column).

WARNING:
1. ILS DME IOP reads zero at RWY 07 THR.
2. MAPt at LMM O. Timing not authorized for defining MAPt.
3. STAR PARAT 1S, BEDAP 1S, NETMI 1S, LEGNA 1S - pass IAF at FL060 or above.