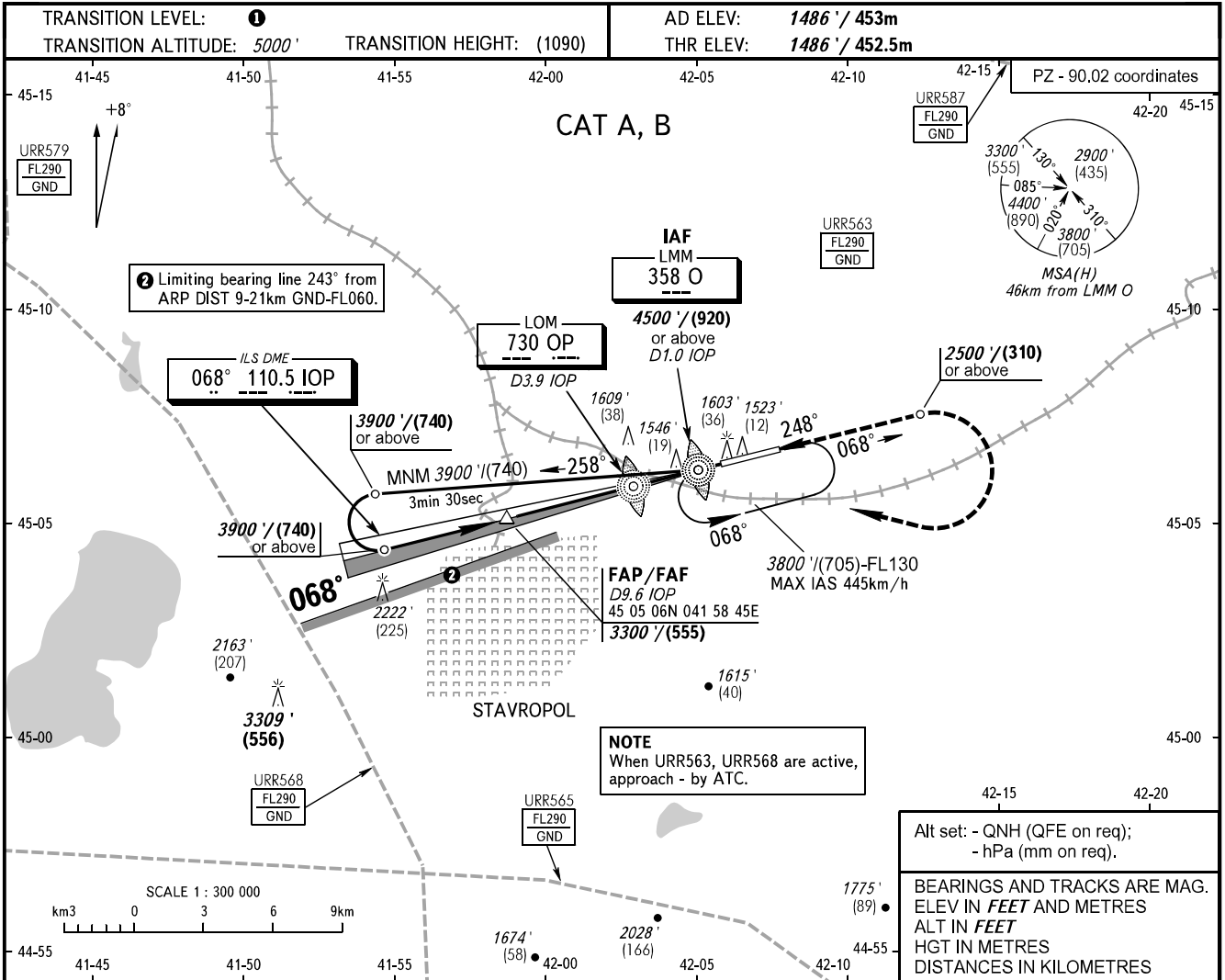


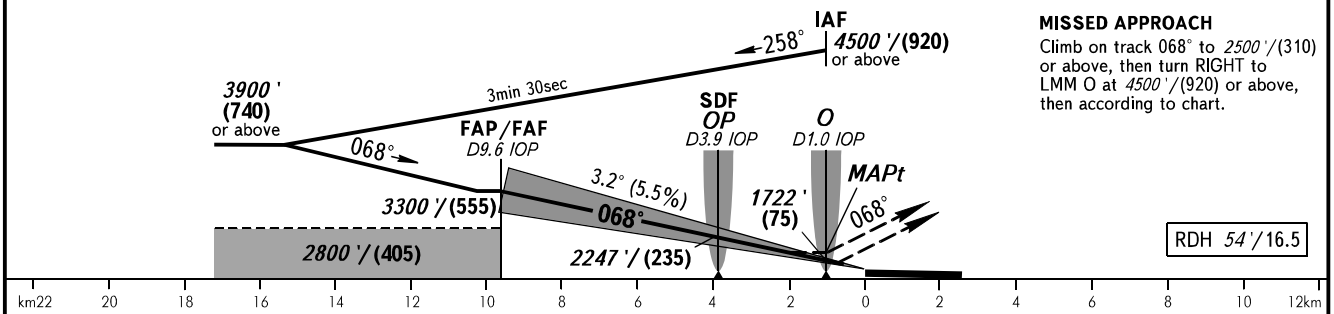
**INSTRUMENT
APPROACH
CHART - ICAO**

**STAVROPOL, RUSSIA
SHPAKOVSKOYE
ILS W CAT I, LOC W RWY 07**

TOWER **120.900**



DME IOP	9.6	8.0	6.0	4.0	2.0
ALTITUDE/HEIGHT	3300' / (555)	2990' / (460)	2630' / (350)	2270' / (240)	1910' / (130)



OCA(H)		A	B	C	D						
Straight-in Approach	CAT I	1652' (167') (51)	1665' (179') (55)								
	LOC With SDF	1810' (320') (100)	1810' (320') (100)								
	LOC WO SDF	1980' (500') (155)	1980' (500') (155)								
Circling		1940' (450') (140)	1980' (500') (155)								
GROUND SPEED		km/h	150	180	210	240	270	300	330	360	390
RATE OF DESCENT		m/s	2.3	2.8	3.2	3.7	4.1	4.6	5.1	5.5	6.0
		ft/min	451	541	632	722	812	902	992	1082	1173

1 TRANSITION LEVEL:
 - FL060 when QNH is 1013 hPa (760mm mercury column) or above;
 - FL070 when QNH is 977 hPa (733mm mercury column) or above, but less than 1013 hPa (760mm mercury column);
 - FL080 when QNH is less than 977 hPa (733mm mercury column).

WARNING:
 1. MAPt at LMM O. Timing not authorized for defining MAPt.
 2. ILS DME IOP reads zero at RWY 07 THR.

CHANGE: Heading, HGT