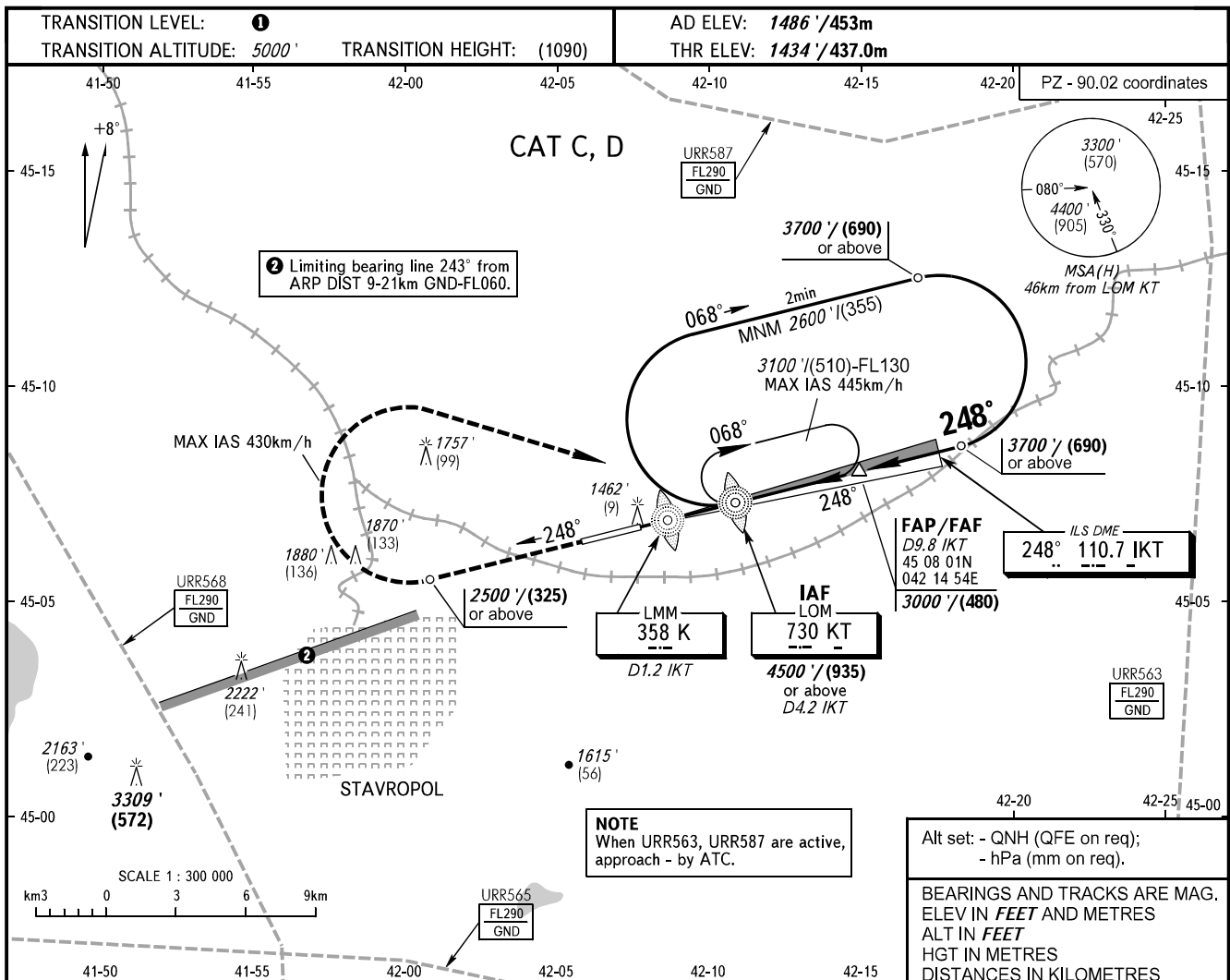


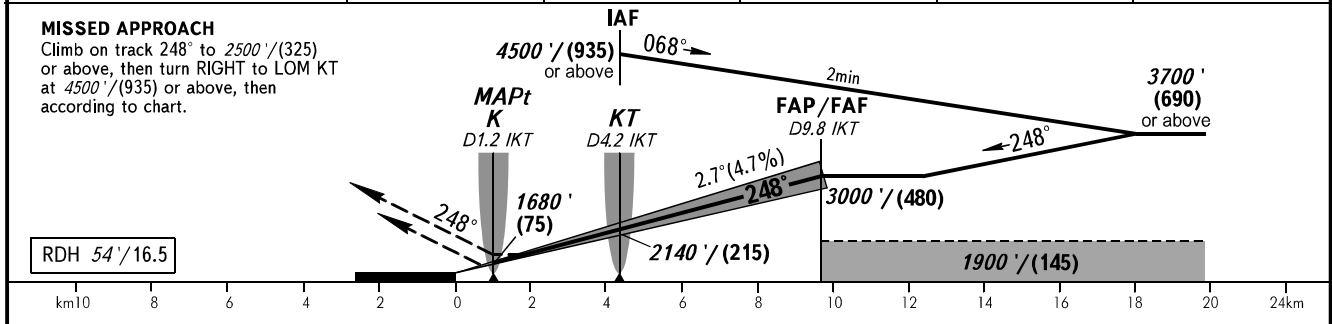
**INSTRUMENT
APPROACH
CHART - ICAO**

**STAVROPOL, RUSSIA
SHPAKOVSKOYE
ILS X CAT I, LOC X RWY 25**

TOWER **120.900**



DME IKT	2.0	4.0	6.0	8.0	9.8
ALTITUDE/HEIGHT	1800' / (115)	2110' / (210)	2420' / (305)	2730' / (395)	3000' / (480)



OCA(H)		A	B	C	D						
Straight-in Approach	CAT I			1612' (179') (54)	1623' (189') (58)						
	LOC			1700' (270') (85)	1700' (270') (85)						
	Circling			2150' (670') (205)	2270' (780') (240)						
GROUND SPEED		km/h	150	180	210	240	270	300	330	360	390
RATE OF DESCENT		m/s	1.9	2.3	2.7	3.1	3.5	3.9	4.3	4.7	5.0
		ft/min	385	463	540	617	694	771	848	925	1002

① **TRANSITION LEVEL:**

- FL060 when QNH is 1013 hPa (760mm mercury column) or above;
- FL070 when QNH is 977 hPa (733mm mercury column) or above, but less than 1013 hPa (760mm mercury column);
- FL080 when QNH is less than 977 hPa (733mm mercury column).

WARNING
ILS DME IKT reads zero at RWY 25 THR.

CHANGE: Heading, HGT