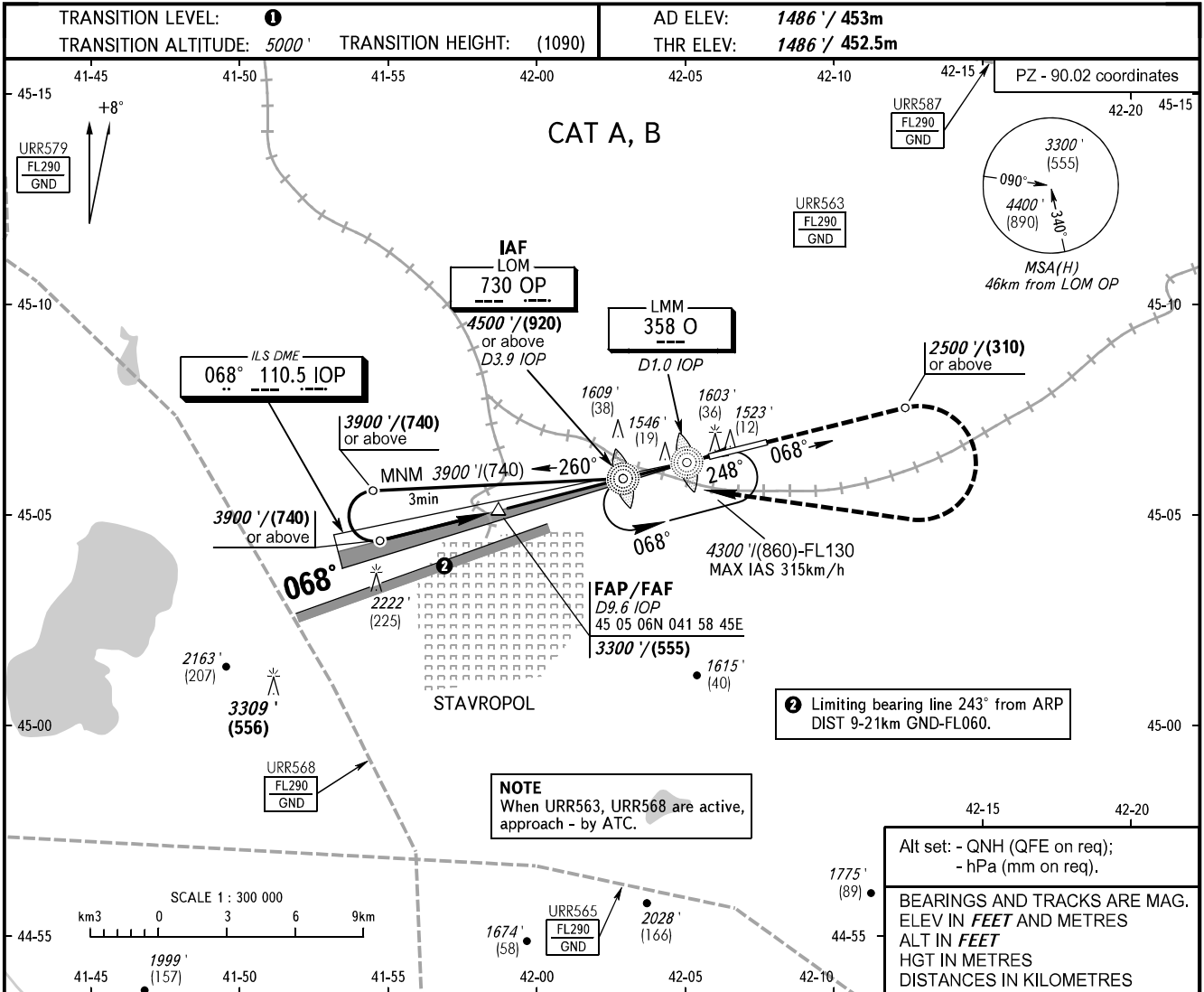


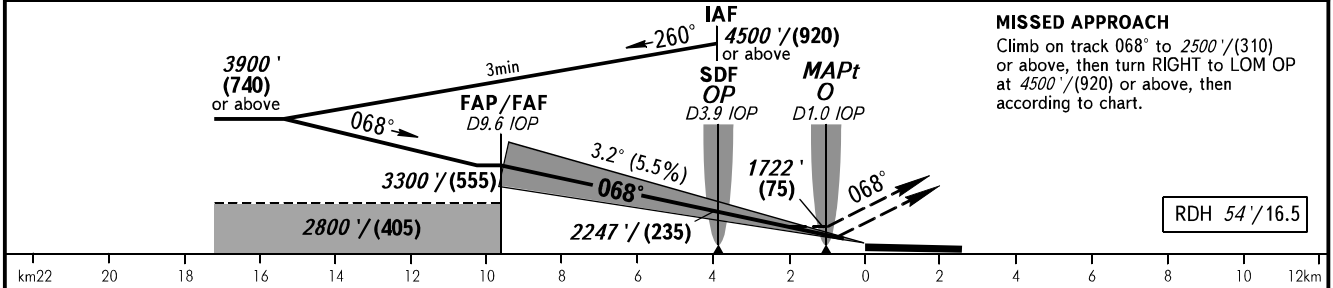
**INSTRUMENT
APPROACH
CHART - ICAO**

**STAVROPOL, RUSSIA
SHPAKOVSKOYE
ILS Y CAT I, LOC Y RWY 07**

TOWER **120.900**



DME IOP	9.6	8.0	6.0	4.0	2.0
ALTITUDE/HEIGHT	3300' / (555)	2990' / (460)	2630' / (350)	2270' / (240)	1910' / (130)



		OCA(H)		A	B	C	D
Straight-in Approach	CAT I	1652' (167')	1665' (179')	(51)	(55)		
	LOC With SDF	1810' (320')	1810' (320')	(100)	(100)		
	LOC WO SDF	1980' (500')	1980' (500')	(155)	(155)		
Circling		1940' (450')	1980' (500')	(140)	(155)		

① TRANSITION LEVEL:
- FL060 when QNH is 1013 hPa (760mm mercury column) or above;
- FL070 when QNH is 977 hPa (733mm mercury column) or above, but less than 1013 hPa (760mm mercury column);
- FL080 when QNH is less than 977 hPa (733mm mercury column).

WARNING:
1. MAPt at LMM O. Timing not authorized for defining MAPt.
2. ILS DME IOP reads zero at RWY 07 THR.

GROUND SPEED	km/h	150	180	210	240	270	300	330	360	390
RATE OF DESCENT	m/s	2.3	2.8	3.2	3.7	4.1	4.6	5.1	5.5	6.0
	ft/min	451	541	632	722	812	902	992	1082	1173

CHANGE: Heading, HGT