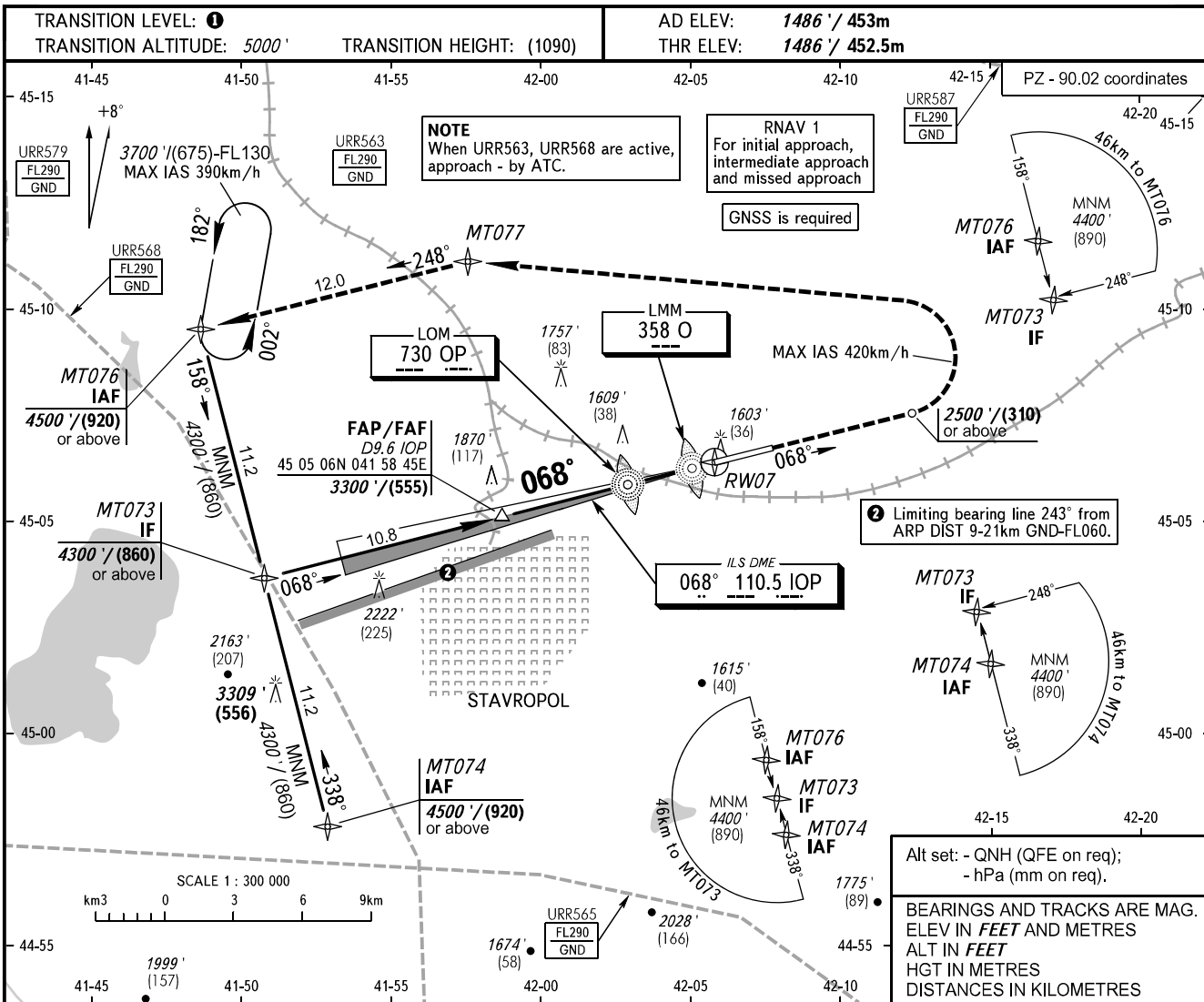


**INSTRUMENT
APPROACH
CHART - ICAO**

TOWER **120.900**

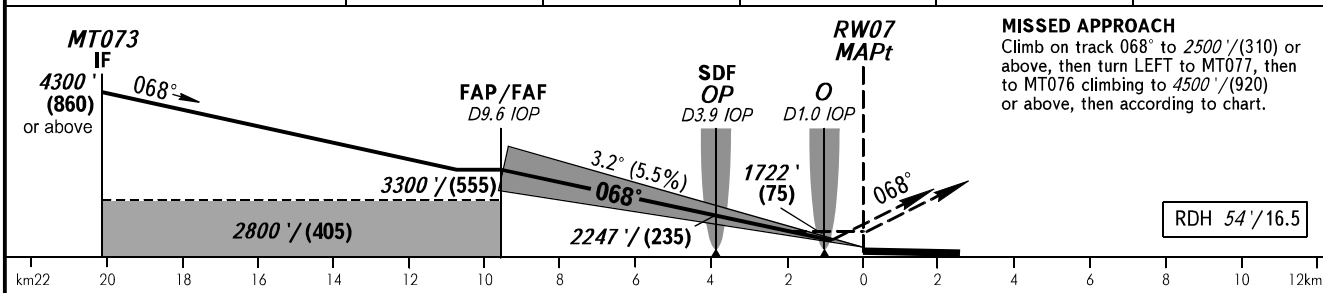
STAVROPOL, RUSSIA
SHPAKOVSKOYE
ILS Z CAT I, LOC Z RWY 07



Alt set: - QNH (QFE on req);
- hPa (mm on req).

BEARINGS AND TRACKS ARE MAG.
ELEV IN FEET AND METRES
ALT IN FEET
HGT IN METRES
DISTANCES IN KILOMETRES

DME IOP	9.6	8.0	6.0	4.0	2.0
ALTITUDE/HEIGHT	3300' / (555)	2990' / (460)	2630' / (350)	2270' / (240)	1910' / (130)



MISSED APPROACH
Climb on track 068° to 2500' / (310) or above, then turn LEFT to MT077, then to MT076 climbing to 4500' / (920) or above, then according to chart.

		A	B	C	D						
Straight-in Approach	OCA(H)	1652' (167') (51)	1665' (179') (55)	1673' (187') (57)	1683' (198') (60)						
	CAT I	1652' (167') (51)	1665' (179') (55)	1673' (187') (57)	1683' (198') (60)						
	LOC With SDF	1810' (320') (100)	1810' (320') (100)	1810' (320') (100)	1810' (320') (100)						
Circling	LOC WO SDF	1980' (500') (155)	1980' (500') (155)	1980' (500') (155)	1980' (500') (155)						
		1940' (450') (140)	1980' (500') (155)	2150' (670') (205)	2270' (780') (240)						
GROUND SPEED		km/h	150	180	210	240	270	300	330	360	390
RATE OF DESCENT		m/s	2.3	2.8	3.2	3.7	4.1	4.6	5.1	5.5	6.0
		ft/min	451	541	632	722	812	902	992	1082	1173

TRANSITION LEVEL:
- FL060 when QNH is 1013 hPa (760mm mercury column) or above;
- FL070 when QNH is 977 hPa (733mm mercury column) or above, but less than 1013 hPa (760mm mercury column);
- FL080 when QNH is less than 977 hPa (733mm mercury column).

WARNING
ILS DME IOP reads zero at RWY 07 THR.

CHANGE: Heading, HGT