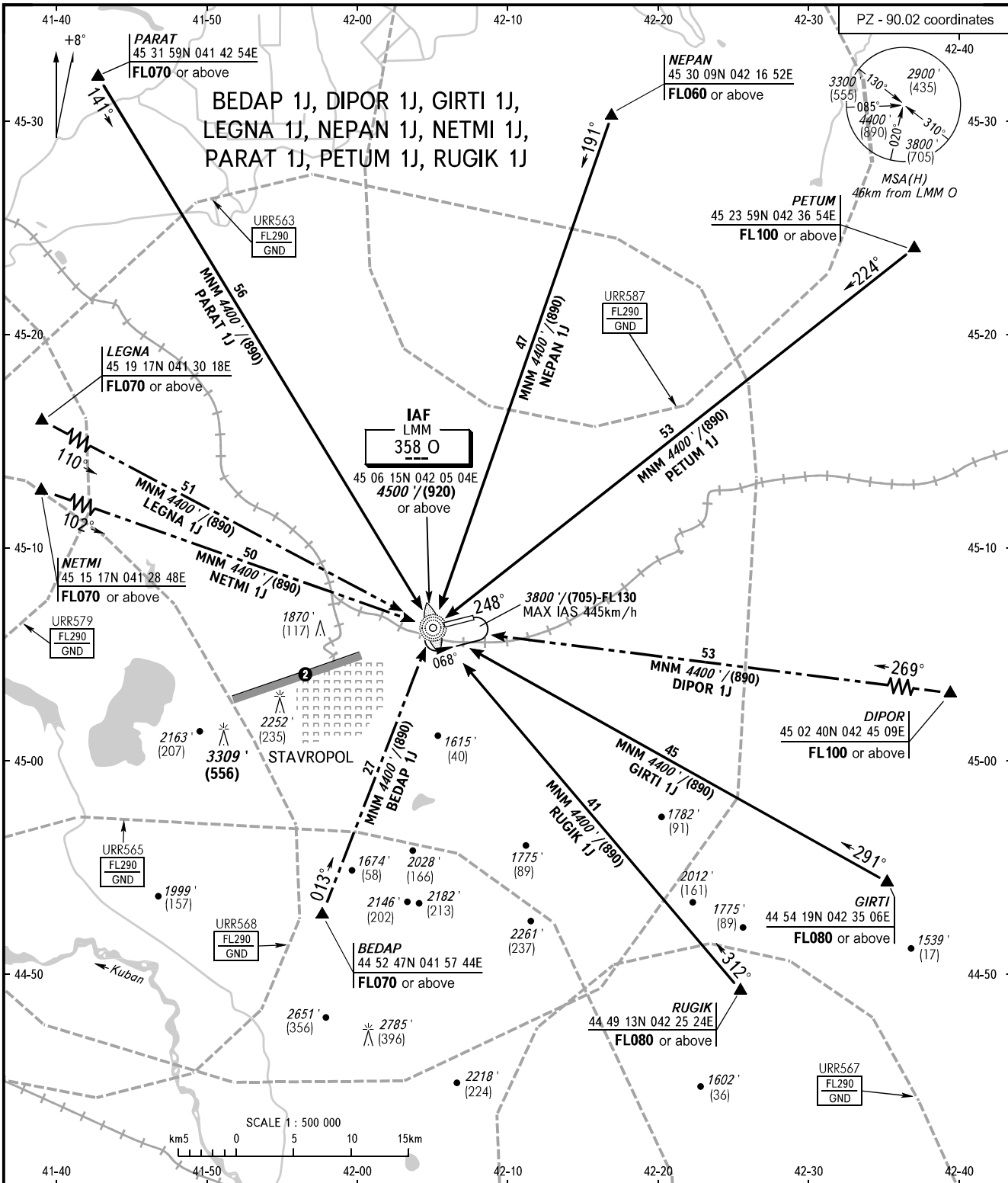


STANDARD ARRIVAL CHART
INSTRUMENT (STAR) - ICAO

STAVROPOL, RUSSIA
SHPAKOVSKOYE
RWY 07

TRANSITION
LEVEL: 1



APPROACH TOWER 121.050
120.900

- 1 TRANSITION LEVEL:
- FL060 when QNH is 1013 hPa (760mm mercury column) or above;
- FL070 when QNH is 977 hPa (733mm mercury column) or above, but less than 1013 hPa (760mm mercury column);
- FL080 when QNH is less than 977 hPa (733mm mercury column).
- 2 Limiting bearing line 243° from ARP
DIST 9-21km GND-FL060.

BEARINGS AND TRACKS ARE MAGNETIC
ALTITUDES IN FEET
HEIGHTS IN METRES
ELEVATIONS IN FEET AND METRES
DISTANCES IN KILOMETRES

Alt set: - QNH (QFE on req);
- hPa (mm on req).

CHANGE: Heading, HGT