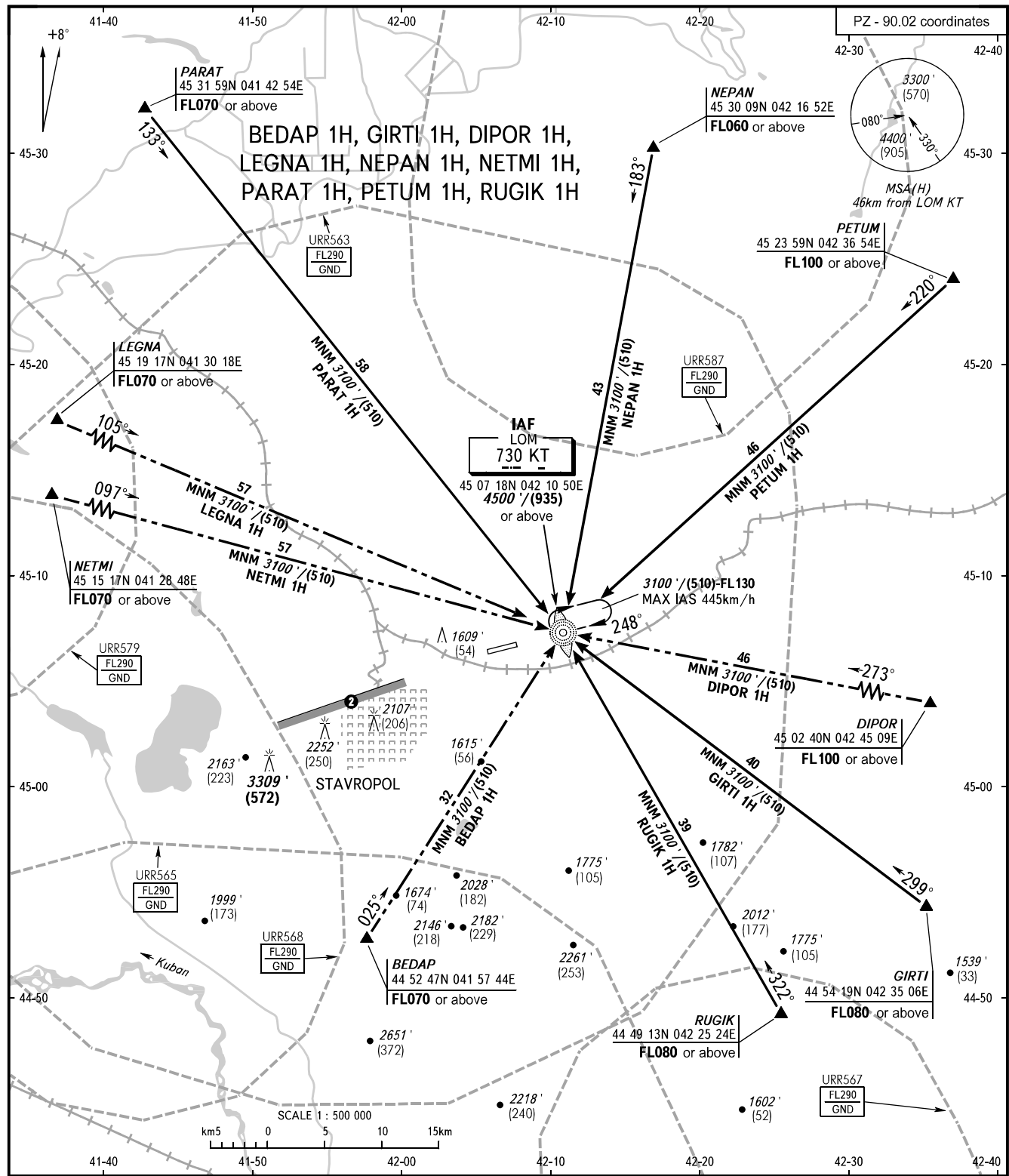


STANDARD ARRIVAL CHART  
INSTRUMENT (STAR) - ICAO

STAVROPOL, RUSSIA  
SHPAKOVSKOYE  
RWY 25

TRANSITION  
LEVEL: 1



APPROACH TOWER	121.050 120.900
BEARINGS AND TRACKS ARE MAGNETIC ALTITUDES IN FEET HEIGHTS IN METRES ELEVATIONS IN FEET AND METRES DISTANCES IN KILOMETRES	
Alt set: - QNH (QFE on req); - hPa (mm on req).	

- 1 TRANSITION LEVEL:  
- FL060 when QNH is 1013 hPa (760mm mercury column) or above;  
- FL070 when QNH is 977 hPa (733mm mercury column) or above, but less than 1013 hPa (760mm mercury column);  
- FL080 when QNH is less than 977 hPa (733mm mercury column).
- 2 Limiting bearing line 243° from ARP  
DIST 9-21km GND-FL060.