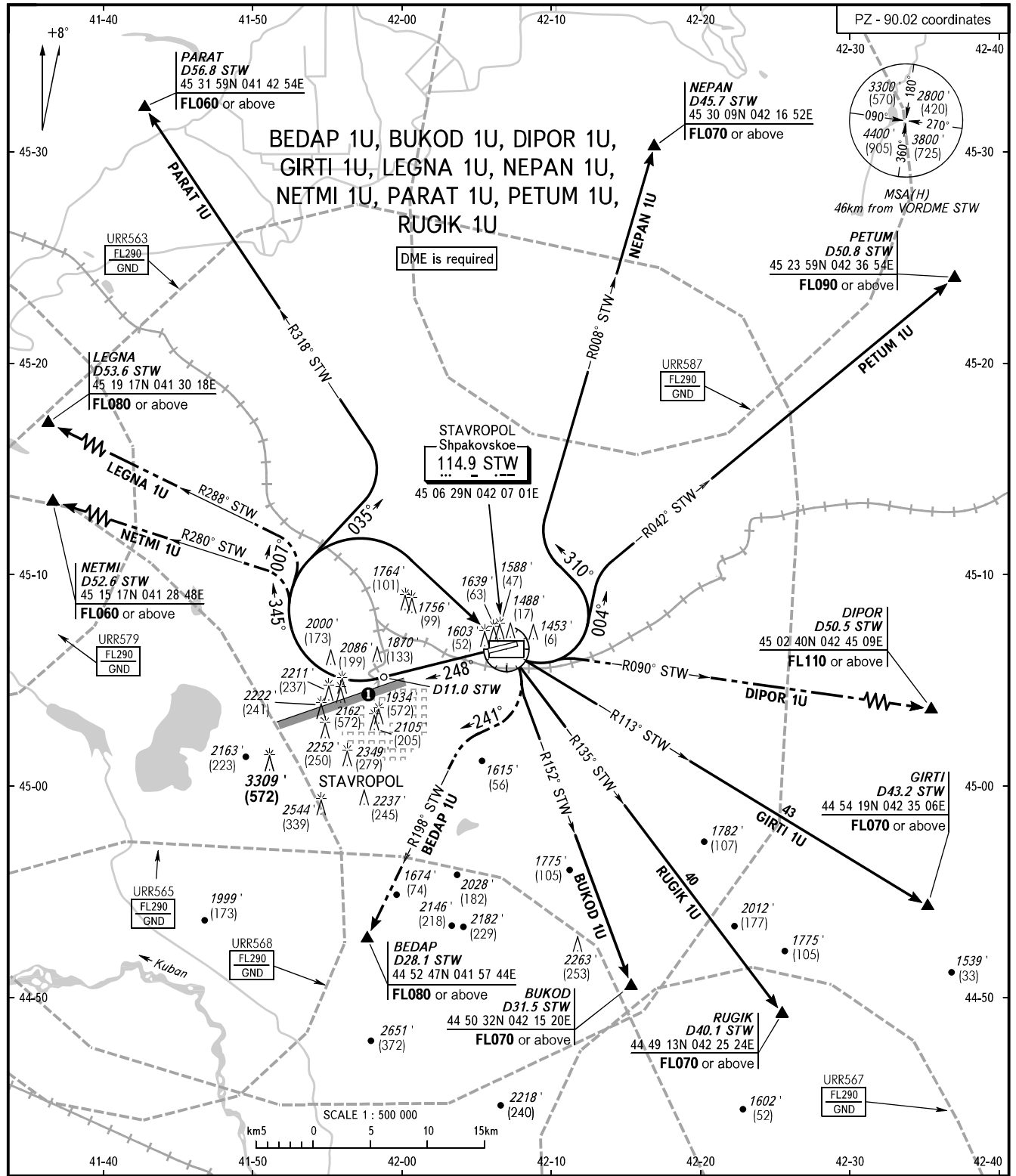


STANDARD DEPARTURE CHART  
INSTRUMENT (SID) - ICAO

TRANSITION ALTITUDE: **5000'**  
TRANSITION HEIGHT: **(1090)**

STAVROPOL, RUSSIA  
SHPAKOVSKOYE  
RWY 25



TOWER **120.900**  
APPROACH **121.050**

**WARNING**  
① Limiting bearing line 243° from ARP  
DIST 9-21km GND-FL060.

**NOTE**  
BUKOD 1U, BEDAP 1U are not AVBL, when URR563, URR565, URR568 are active.  
DIPOR 1U, GIRTI 1U are not AVBL, when URR563, URR568 are active.  
LEGNA 1U, NETMI 1U are not AVBL, when URR563, URR568, URR579 are active.  
NEPAN 1U, PETUM 1U are not AVBL, when URR563, URR587 are active.  
PARAT 1U is not AVBL, when URR563, URR587, URR568 are active.  
RUGIK 1U is not AVBL, when URR563, URR568, URR567 are active.

BEARINGS AND TRACKS ARE MAGNETIC  
ALTITUDES IN **FEET**  
HEIGHTS IN METRES  
ELEVATIONS IN **FEET** AND METRES  
DISTANCES IN KILOMETRES

Alt set: - QNH (QFE on req);  
- hPa (mm on req).