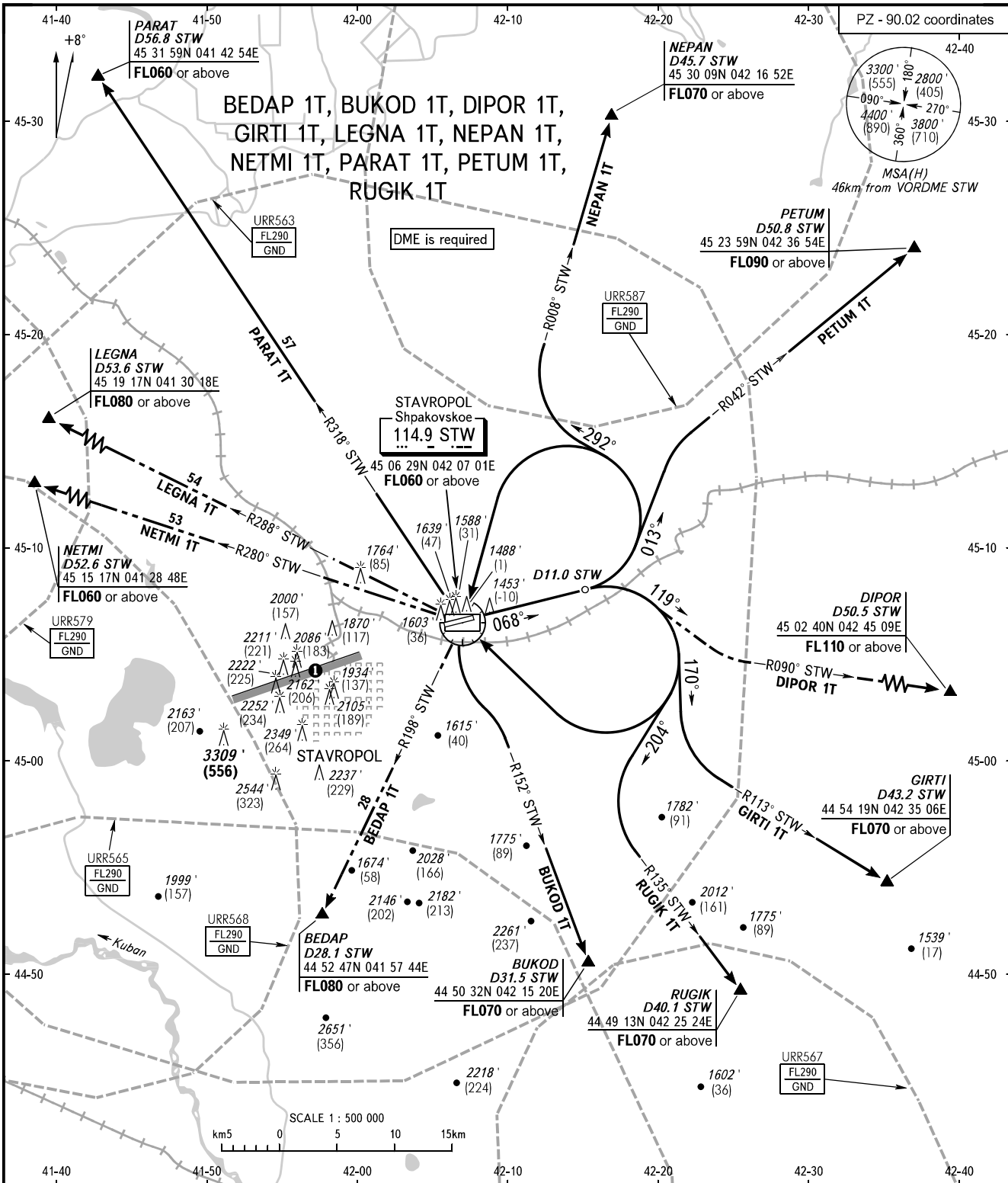


STANDARD DEPARTURE CHART
INSTRUMENT (SID) - ICAO

TRANSITION ALTITUDE: 5000'
TRANSITION HEIGHT: (1090)

STAVROPOL, RUSSIA
SHPAKOVSKOYE
RWY 07



TOWER APPROACH 120.900
121.050

WARNING
① Limiting bearing line 243° from ARP
DIST 9-21km GND-FL060.

The minimum climb gradients are as follows
(required due to the airspace structure):
- 4.5% up to FL090 for SID PETUM 1T;
- 5.7% up to FL110 for SID DIPOR 1T;
- 3.4% up to FL070 for SID GIRTI 1T.

NOTE
BUKOD 1T, BEDAP 1T are not AVBL, when URR563, URR565, URR587 are active.
DIPOR 1T, PARAT 1T are not AVBL, when URR563 is active.
GIRTI 1T is not AVBL, when URR563, URR567 are active.
LEGNA 1T, NETMI 1T are not AVBL, when URR563, URR568, URR579 are active.
NEPAN 1T, PETUM 1T are not AVBL, when URR563, URR587 are active.
RUGIK 1T is not AVBL, when URR563, URR567, URR565 are active.

BEARINGS AND TRACKS ARE MAGNETIC
ALTITUDES IN FEET
HEIGHTS IN METRES
ELEVATIONS IN FEET AND METRES
DISTANCES IN KILOMETRES

Alt set: - QNH (QFE on req);
- hPa (mm on req).

CHANGE: Heading, HGT