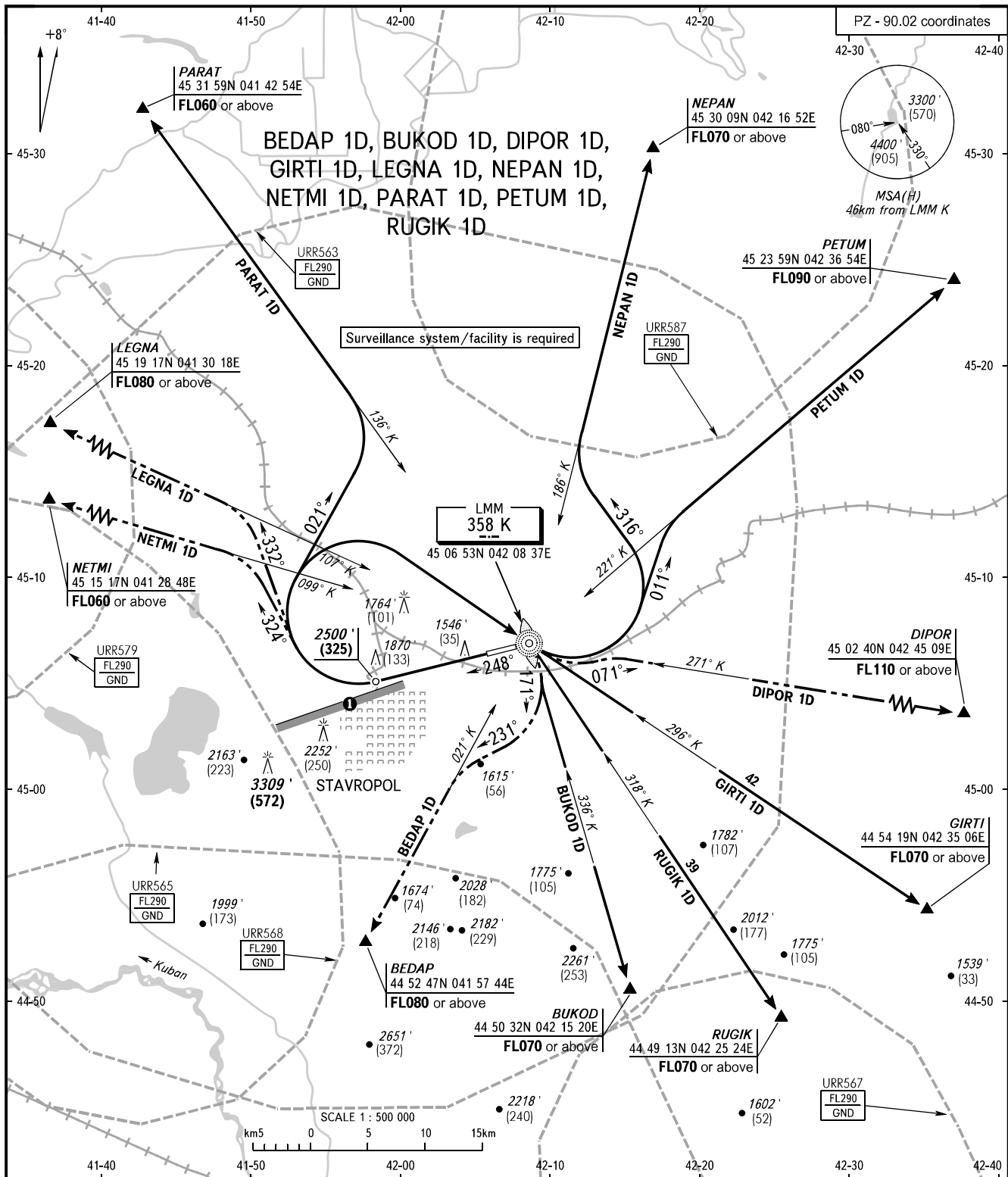


STANDARD DEPARTURE CHART  
INSTRUMENT (SID) - ICAO

TRANSITION ALTITUDE: **5000'**  
TRANSITION HEIGHT: **(1090)**

STAVROPOL, RUSSIA  
SHPAKOVSKOYE  
RWY 25



TOWER **120.900**  
APPROACH **121.050**

① Limiting bearing line 243° from ARP  
DIST 9-21km GND-FL060.

BEARINGS AND TRACKS ARE MAGNETIC  
ALTITUDES IN **FEET**  
HEIGHTS IN METRES  
ELEVATIONS IN **FEET** AND METRES  
DISTANCES IN KILOMETRES

Alt set: - QNH (QFE on req);  
- hPa (mm on req).

**NOTE**  
BUKOD 1D by ATC, when URR563, URR565, URR567 are active.  
GIRTI 1D, PARAT 1D by ATC, when URR563 is active.  
NEPAN 1D, PETUM 1D by ATC, when URR563, URR587 are active.  
RUGIK 1D by ATC, when URR563, URR567 are active.