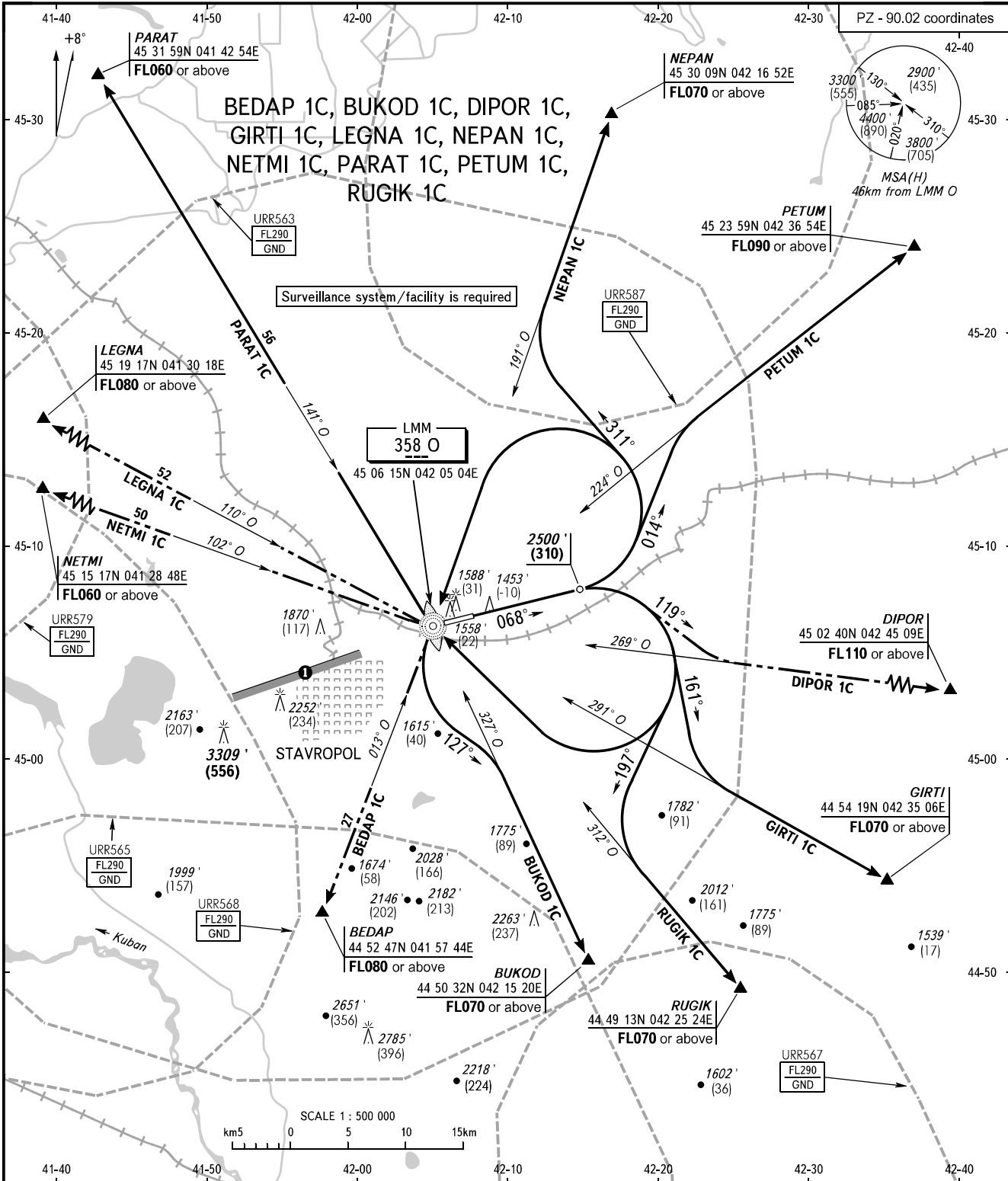


STANDARD DEPARTURE CHART
INSTRUMENT (SID) - ICAO

TRANSITION ALTITUDE: 5000'
TRANSITION HEIGHT: (1090)

STAVROPOL, RUSSIA
SHPAKOVSKOYE
RWY 07



TOWER APPROACH	120.900 121.050	<p>WARNING The minimum climb gradients are as follows (required due to the airspace structure): - 4.6% up to FL090 for SID PETUM 1C; - 5.7% up to FL110 for SID DIPOR 1C.</p>
<p>NOTE BUKOD 1C by ATC, when URR563, URR565, URR567 are active. GIRTI 1C by ATC when URR563 is active. NEPAN 1C, PARAT 1C, PETUM 1C by ATC, when URR563, URR587 are active. RUGIK 1C by ATC, when URR563, URR567 are active.</p>		
<p>BEARINGS AND TRACKS ARE MAGNETIC ALTITUDES IN FEET HEIGHTS IN METRES ELEVATIONS IN FEET AND METRES DISTANCES IN KILOMETRES</p>		
<p>Alt set: - QNH (QFE on req); - hPa (mm on req).</p>		

CHANGE: Heading, Note