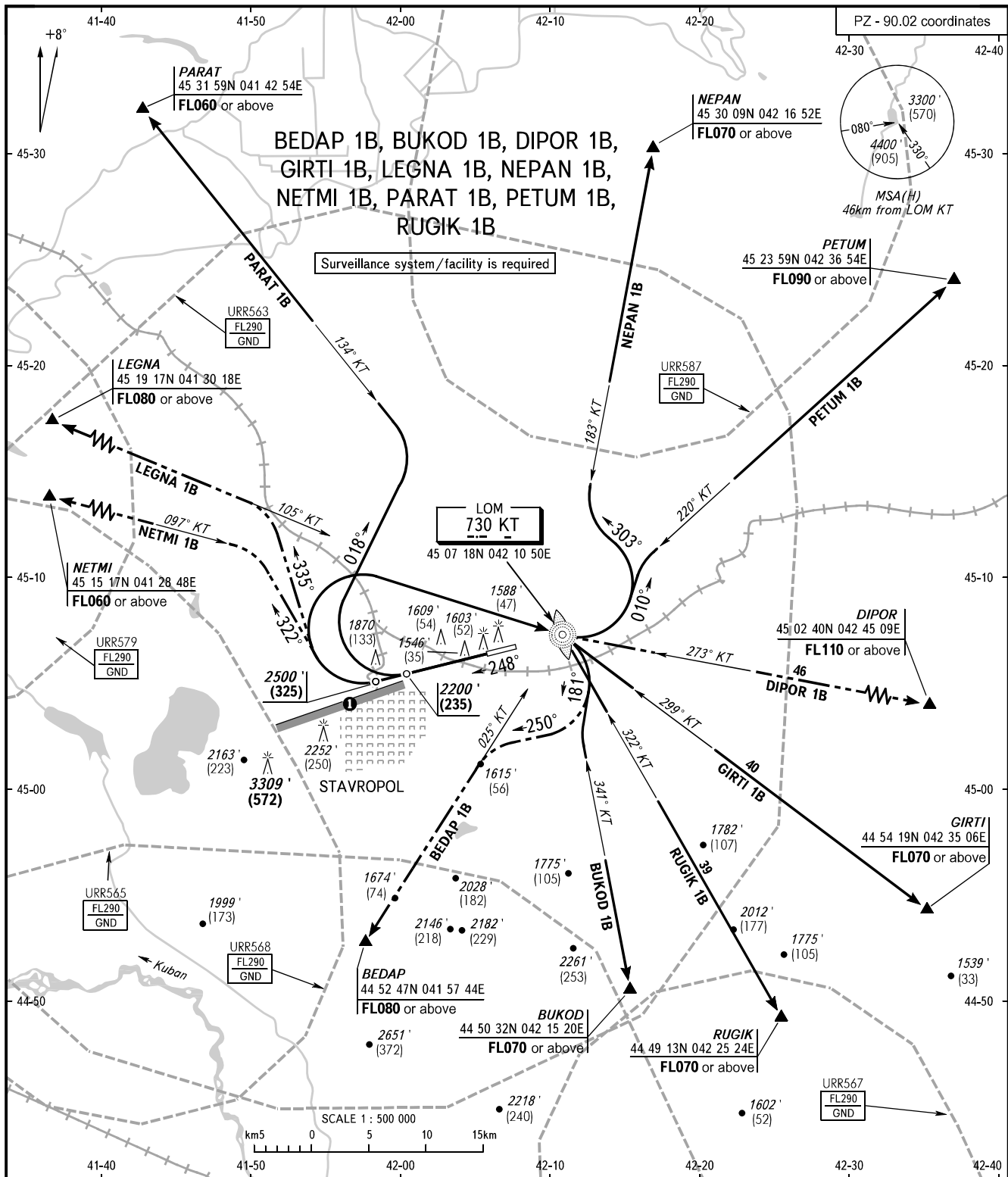


STANDARD DEPARTURE CHART
INSTRUMENT (SID) - ICAO

TRANSITION ALTITUDE: **5000'**
TRANSITION HEIGHT: **(1090)**

STAVROPOL, RUSSIA
SHPAKOVSKOYE
RWY 25



TOWER **120.900**
APPROACH **121.050**

① Limiting bearing line 243° from ARP
DIST 9-21km GND-FL060.

BEARINGS AND TRACKS ARE MAGNETIC
ALTITUDES IN FEET
HEIGHTS IN METRES
ELEVATIONS IN FEET AND METRES
DISTANCES IN KILOMETRES

Alt set: - QNH (QFE on req);
- hPa (mm on req).

NOTE
BUKOD 1B by ATC, when URR563, URR565, URR567 are active.
GIRTI 1B, PARAT 1B by ATC, when URR563 is active.
NEPAN 1B, PETUM 1B by ATC, when URR563, URR587 are active.
RUGIK 1B by ATC, when URR563, URR567 are active.