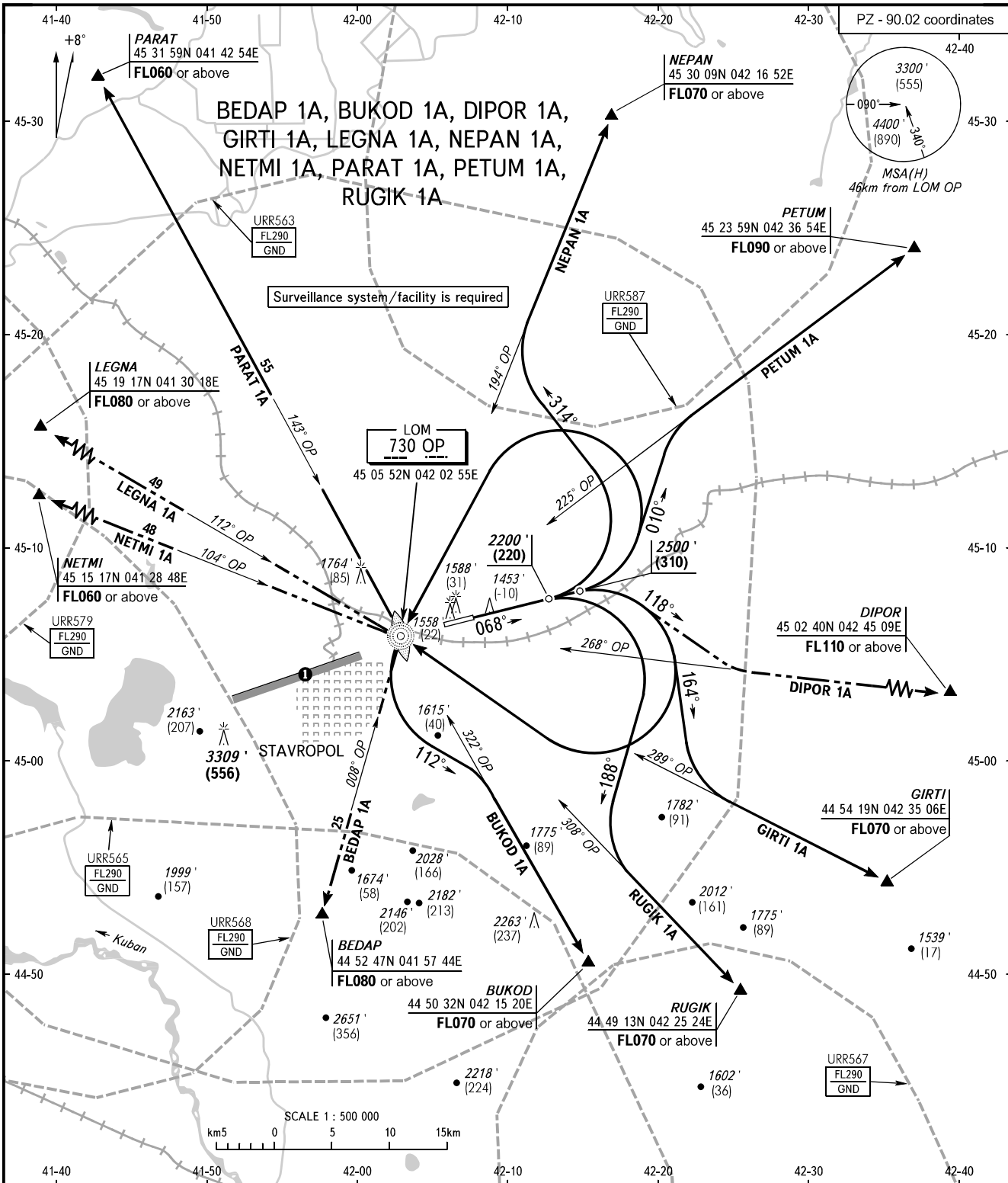


STANDARD DEPARTURE CHART
INSTRUMENT (SID) - ICAO

TRANSITION ALTITUDE: 5000'
TRANSITION HEIGHT: (1090)

STAVROPOL, RUSSIA
SHPAKOVSKOYE
RWY 07



TOWER 120.900
APPROACH 121.050

WARNING

① Limiting bearing line 243° from ARP
DIST 9-21km GND-FL060.

The minimum climb gradients are as follows
(required due to the airspace structure):
- 4.5% up to FL090 for SID PETUM 1A;
- 5.8% up to FL110 for SID DIPOR 1A.

NOTE

BUKOD 1A by ATC, when URR563, URR565, URR567 are active.
GIRTI 1A by ATC when URR563 is active.
PARAT 1A, NEPAN 1A by ATC, when URR563, URR587 are active.
PETUM 1A by ATC, when URR563, URR587 are active.
RUGIK 1A by ATC, when URR563, URR567 are active.

BEARINGS AND TRACKS ARE MAGNETIC
ALTITUDES IN FEET
HEIGHTS IN METRES
ELEVATIONS IN FEET AND METRES
DISTANCES IN KILOMETRES

Alt set: - QNH (QFE on req);
- hPa (mm on req).

CHANGE: Heading, Note