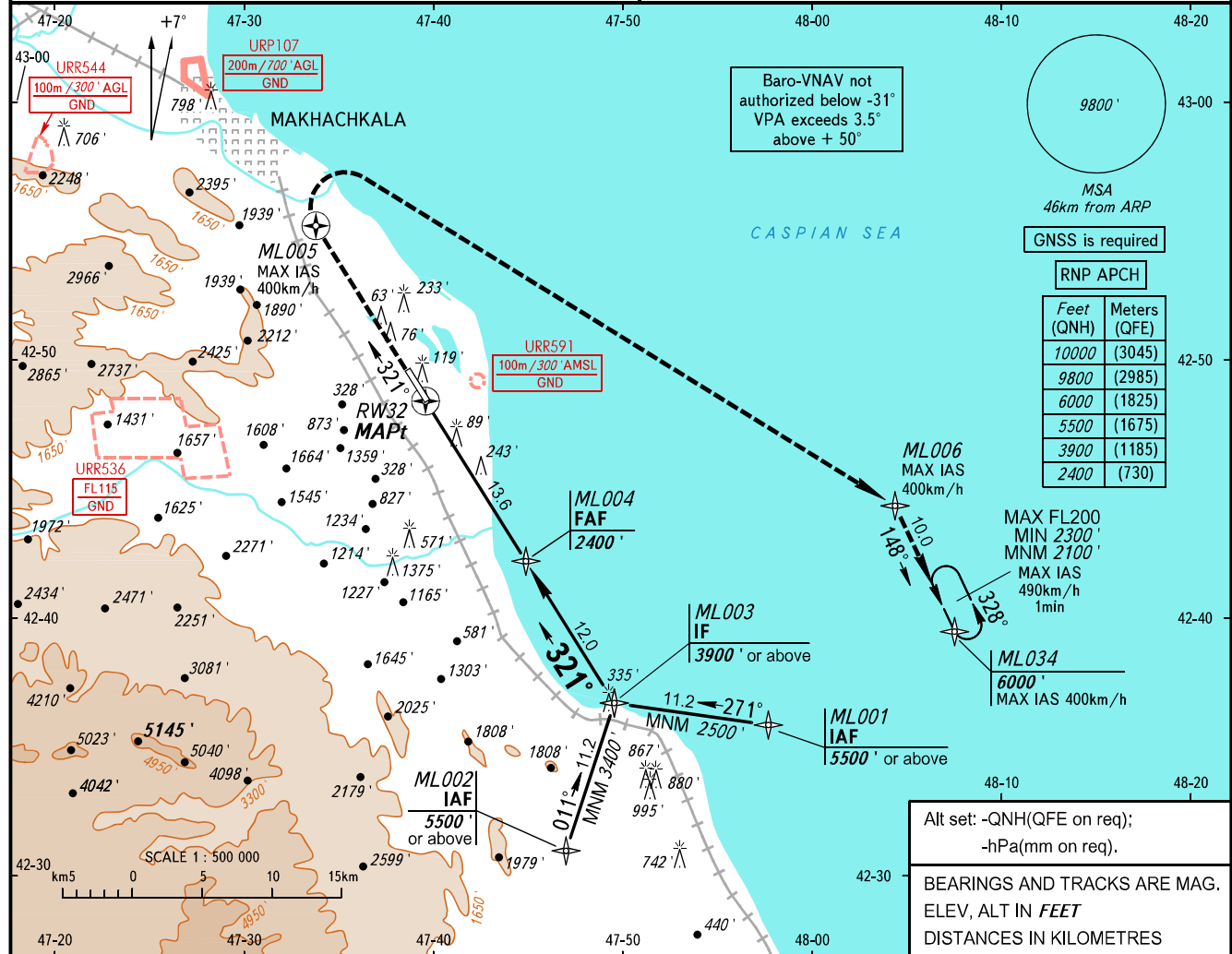


**INSTRUMENT
APPROACH
CHART - ICAO**

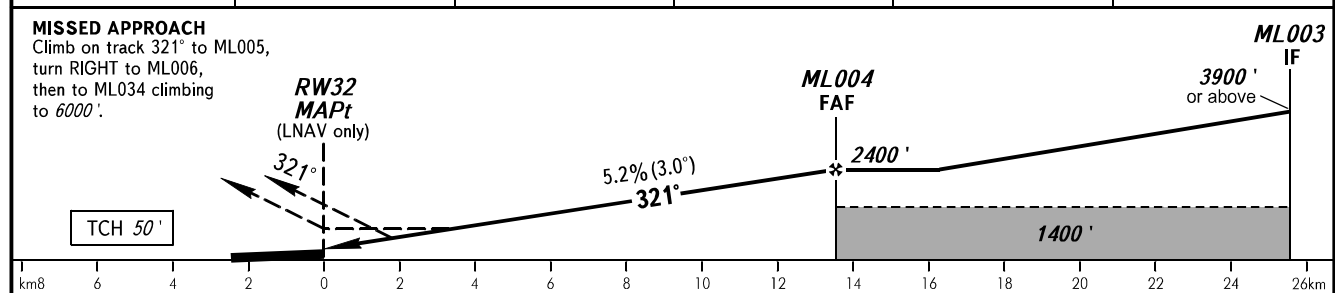
RADAR TOWER 121.300
121.300

MAKHACHKALA, RUSSIA
UYTASH
RNP RWY 32

TRANSITION LEVEL: **1**
TRANSITION ALTITUDE: 10000'
AD ELEV: 16'
THR ELEV: 14'



DIST to RW32	4.0	6.0	8.0	10.0	12.0
ALTITUDE	752'	1096'	1440'	1783'	2127'



OCA(H)		A	B	C	D	1 TRANSITION LEVEL: - FL110 when QNH is 1013 hPa (760mm mercury column) or above; - FL120 when QNH is 977 hPa (733mm mercury column) or above, but less than 1013 hPa (760mm mercury column); - FL130 when QNH is less than 977 hPa (733mm mercury column). WARNING: 1. Visual manoeuvring west of the aerodrome is PROHIBITED. 2. MAPt at RW32. Timing not authorized for defining MAPt.						
Straight-in Approach	LNAV	740' (730')	740' (730')	740' (730')	740' (730')							
	LNAV/VNAV	327' (312')	337' (321')	347' (331')	356' (341')							
Circling		790' (770')	830' (810')	1720' (1700')	1870' (1860')							
GROUND SPEED	km/h	150	180	210	240	270	300	330	360	390	420	450
RATE OF DESCENT	m/s	2.2	2.6	3.0	3.5	3.9	4.3	4.8	5.2	5.6	6.1	6.5
	ft/min	427	512	597	682	768	853	938	1024	1109	1194	1280

CHANGE: Holding area