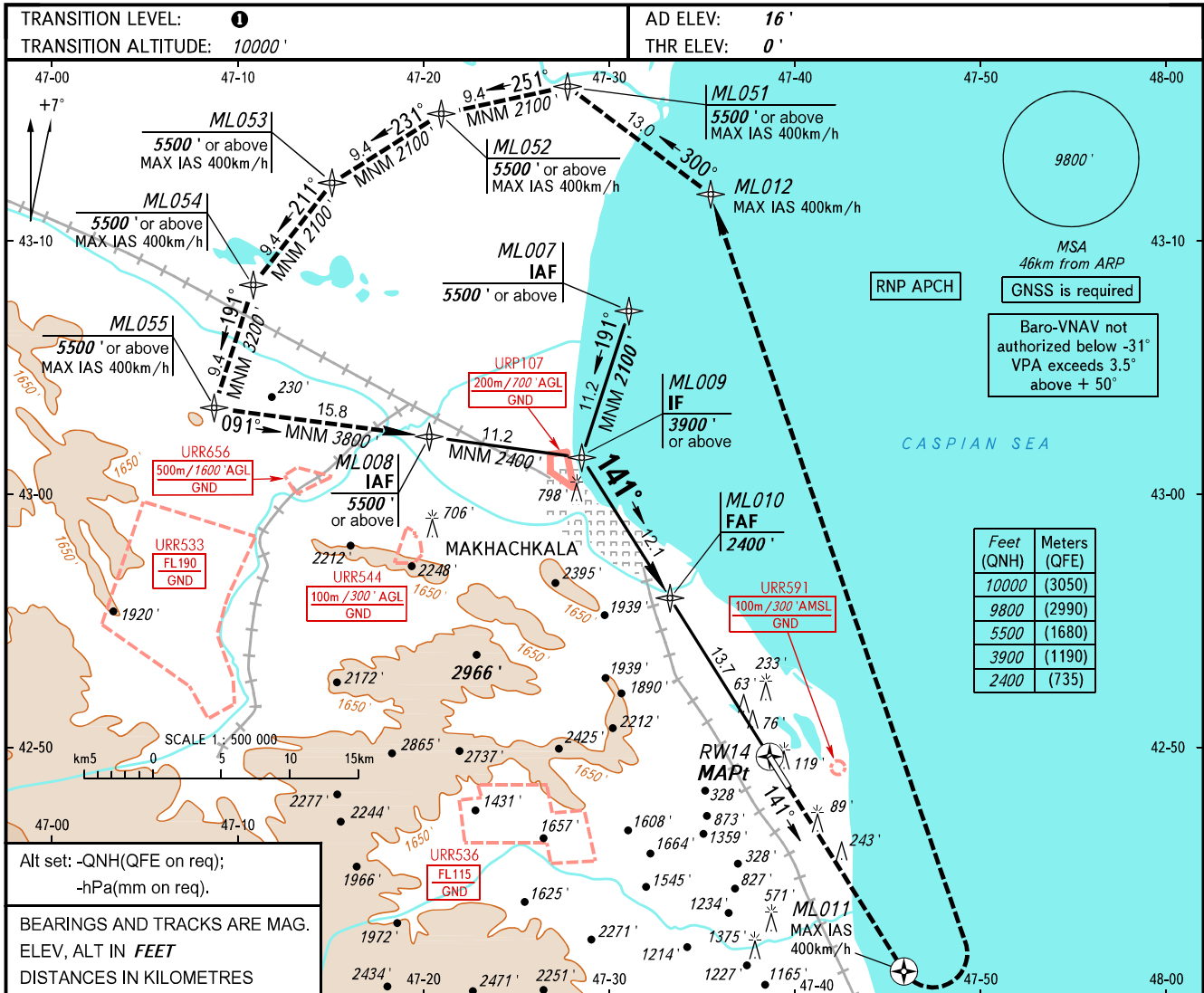


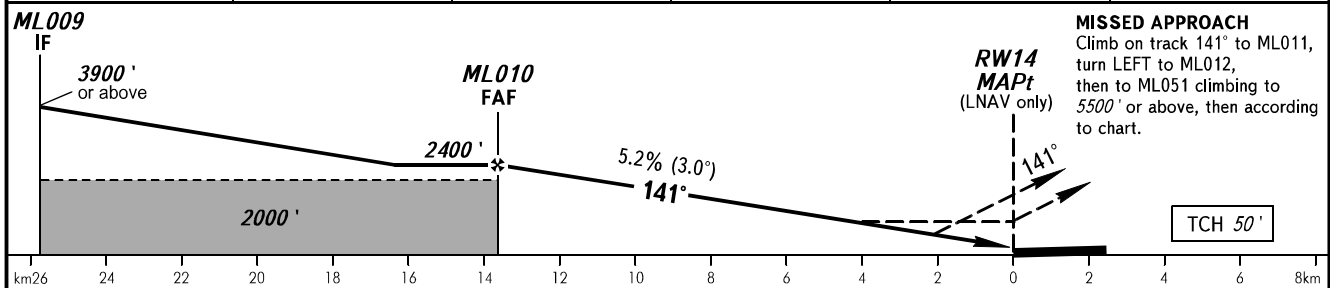
**INSTRUMENT  
APPROACH  
CHART - ICAO**

RADAR TOWER	121.300
	121.300

**MAKHACHKALA, RUSSIA**  
UYTASH  
RNP RWY 14



DIST TO RW14	12.0	10.0	8.0	6.0	4.0
ALTITUDE	2114'	1770'	1426'	1082'	738'



OCA(H)		A	B	C	D
Straight-in Approach	LNAV	690' (690')	690' (690')	690' (690')	690' (690')
	LNAV/VNAV	208' (208')	218' (218')	228' (228')	250' (250')
Circling		790' (770')	830' (810')	1720' (1700')	1870' (1860')

**TRANSITION LEVEL:**  
- FL110 when QNH is 1013 hPa (760mm mercury column) or above;  
- FL120 when QNH is 977 hPa (733mm mercury column) or above, but less than 1013 hPa (760mm mercury column);  
- FL130 when QNH is less than 977 hPa (733mm mercury column).

**WARNING:**  
1. Visual manoeuvring west of the aerodrome is PROHIBITED.  
2. Turn before MAPt is PROHIBITED.  
3. MAPt at RW14. Timing not authorized for defining MAPt.

GROUND SPEED	km/h	150	180	210	240	270	300	330	360	390	420	450
	m/s	2.2	2.6	3.0	3.5	3.9	4.3	4.8	5.2	5.6	6.1	6.5
RATE OF DESCENT	ft/min	427	512	597	682	768	853	938	1024	1109	1194	1280