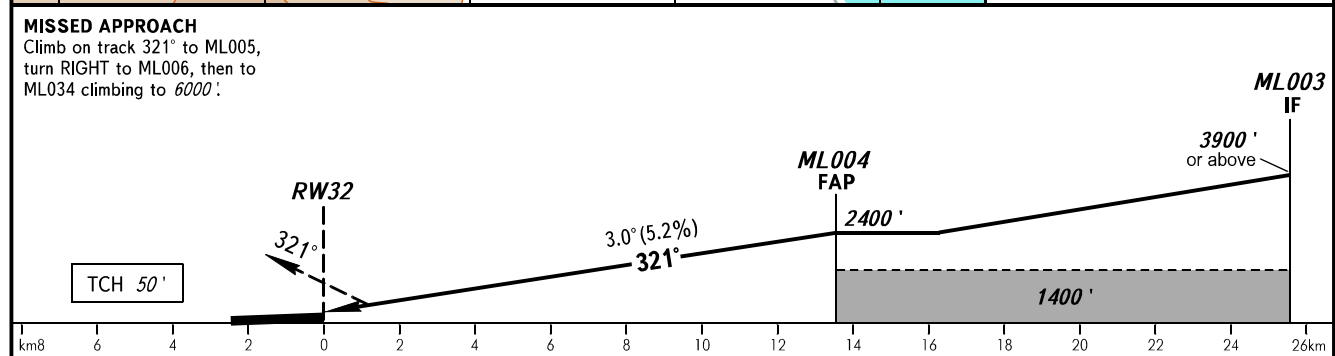
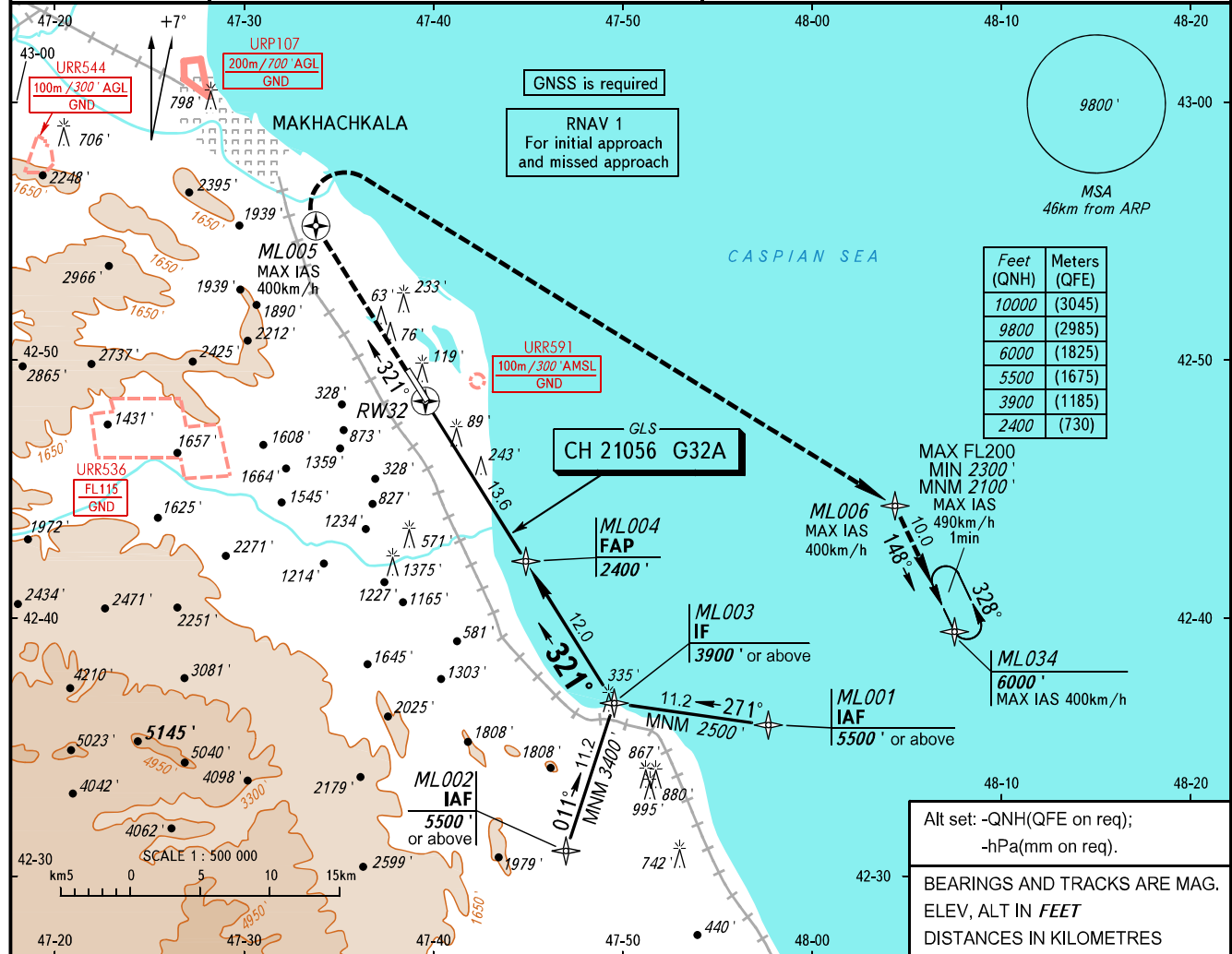


**INSTRUMENT
APPROACH
CHART - ICAO**

MAKHACHKALA, RUSSIA
UYTASH
GLS RWY 32

RADAR TOWER	121.300
TOWER	121.300

GBAS CH 21056 G32A	TRANSITION LEVEL: 1 TRANSITION ALTITUDE: 10000'	AD ELEV: 16' THR ELEV: 14'
------------------------------	---	-------------------------------



OCA(H)		A	B	C	D										
Straight-in Approach	CAT I	192' (178')	201' (188')	211' (198')	221' (208')	1 TRANSITION LEVEL: - FL110 when QNH is 1013 hPa (760mm mercury column) or above; - FL120 when QNH is 977 hPa (733mm mercury column) or above, but less than 1013 hPa (760mm mercury column); - FL130 when QNH is less than 977 hPa (733mm mercury column).									
	Circling	790' (770')	830' (810')	1720' (1700')	1870' (1860')	WARNING Visual manoeuvring west of the aerodrome is PROHIBITED.									
GROUND SPEED		km/h	150	180	210	240	270	300	330	360	390	420	450		
RATE OF DESCENT		m/s	2.2	2.6	3.0	3.5	3.9	4.3	4.8	5.2	5.6	6.1	6.5		
		ft/min	427	512	597	682	768	853	938	1024	1109	1194	1280		

CHANGE: Holding area