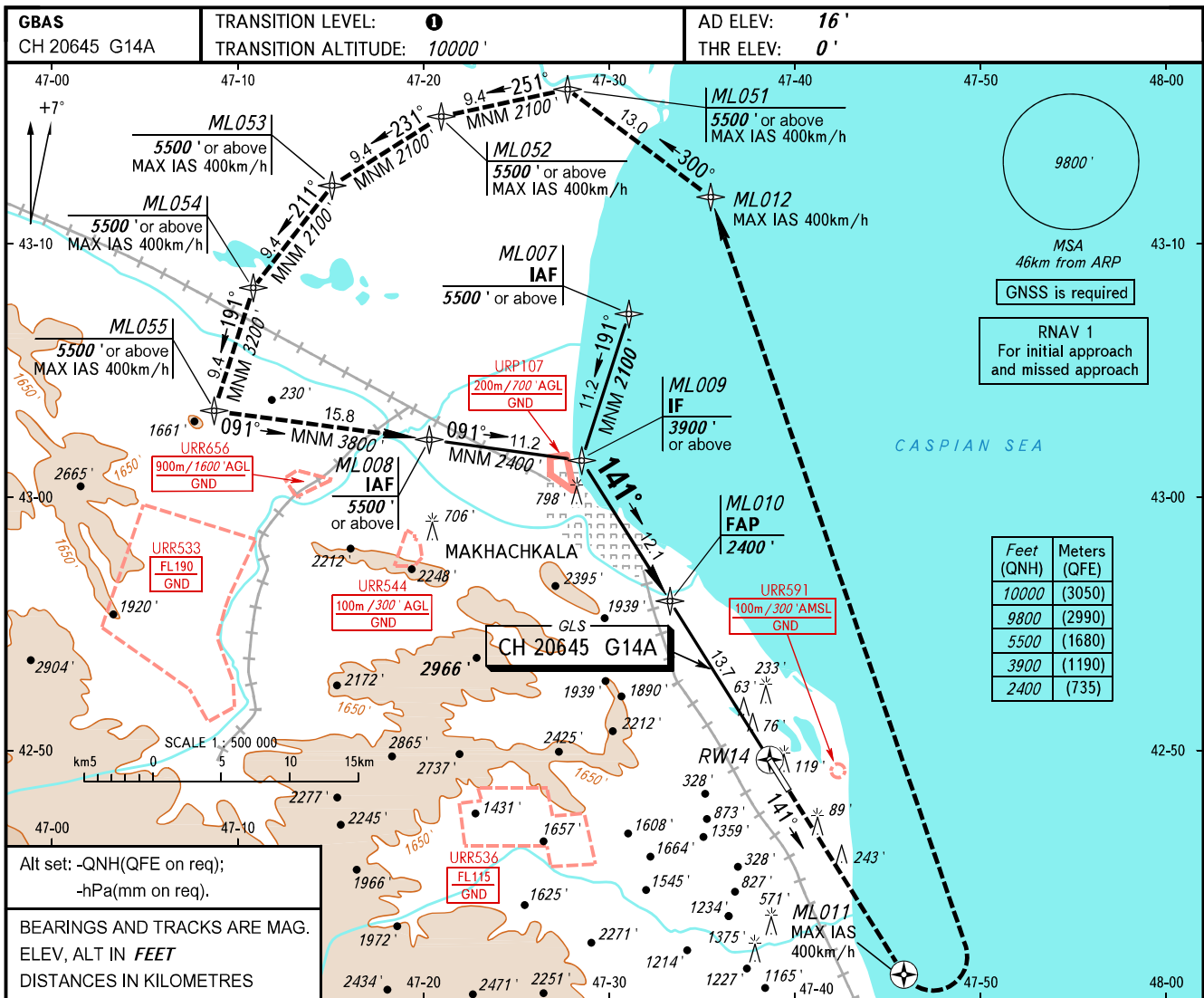


**INSTRUMENT
APPROACH
CHART - ICAO**

RADAR TOWER	121.300
	121.300

MAKHACHKALA, RUSSIA
UYTASH
GLS RWY 14

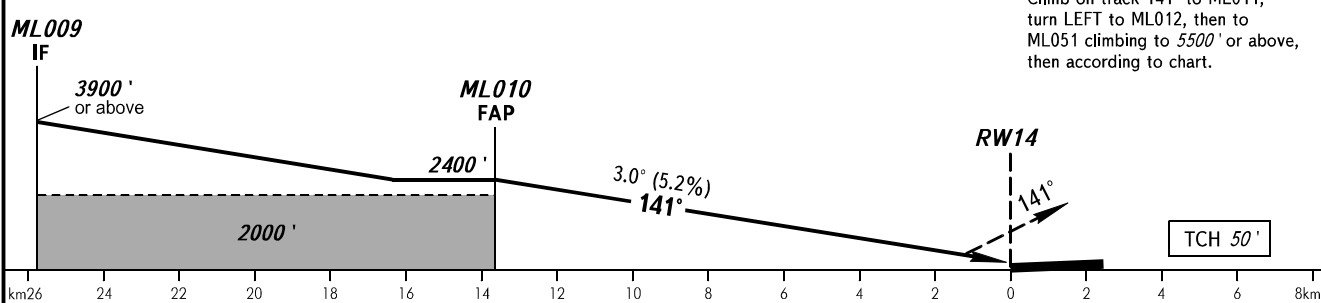


Feet (QNH)	Meters (QFE)
10000	(3050)
9800	(2990)
5500	(1680)
3900	(1190)
2400	(735)

Alt set: -QNH(QFE on req);
-hPa(mm on req).

BEARINGS AND TRACKS ARE MAG.
ELEV, ALT IN FEET
DISTANCES IN KILOMETRES

MISSED APPROACH
Climb on track 141° to ML011, turn LEFT to ML012, then to ML051 climbing to 5500' or above, then according to chart.



OCA(H)		A	B	C	D
Straight-in Approach	CAT I	182' (182')	192' (191')	201' (201')	211' (211')
Circling		790' (770')	830' (810')	1720' (1700')	1870' (1860')

1 TRANSITION LEVEL:
- FL110 when QNH is 1013 hPa (760mm mercury column) or above;
- FL120 when QNH is 977 hPa (733mm mercury column) or above, but less than 1013 hPa (760mm mercury column);
- FL130 when QNH is less than 977 hPa (733mm mercury column).

WARNING
Visual manoeuvring west of the aerodrome is PROHIBITED.

GROUND SPEED	km/h	150	180	210	240	270	300	330	360	390	420	450
RATE OF DESCENT	m/s	2.2	2.6	3.0	3.5	3.9	4.3	4.8	5.2	5.6	6.1	6.5
	ft/min	427	512	597	682	768	853	938	1024	1109	1194	1280