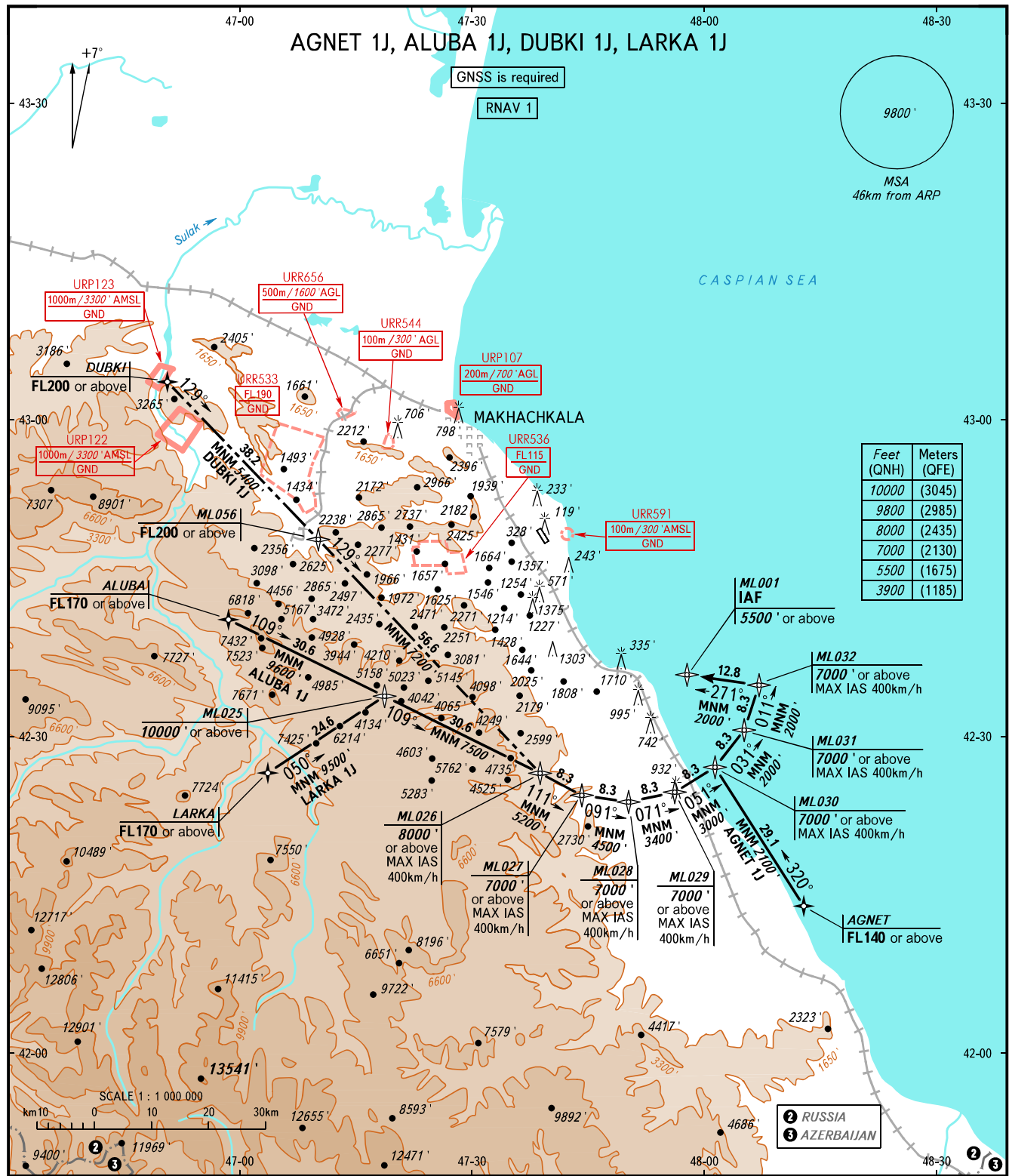


STANDARD ARRIVAL CHART
INSTRUMENT (STAR) - ICAO

TRANSITION
LEVEL: ①

MAKHACHKALA, RUSSIA

UYTASH
RNAV RWY 32



Feet (QNH)	Meters (QFE)
10000	(3045)
9800	(2985)
8000	(2435)
7000	(2130)
5500	(1675)
3900	(1185)

APPROACH 119.700
RADAR 121.300
TOWER 121.300

① TRANSITION LEVEL:
 - FL110 when QNH is 1013 hPa (760mm mercury column) or above;
 - FL120 when QNH is 977 hPa (733mm mercury column) or above but less than 1013 hPa (760mm mercury column);
 - FL130 when QNH is less than 977 hPa (733mm mercury column).

BEARINGS AND TRACKS ARE MAGNETIC
ALTITUDES AND ELEVATIONS IN FEET
DISTANCES IN KILOMETRES

CHANGE: New chart