

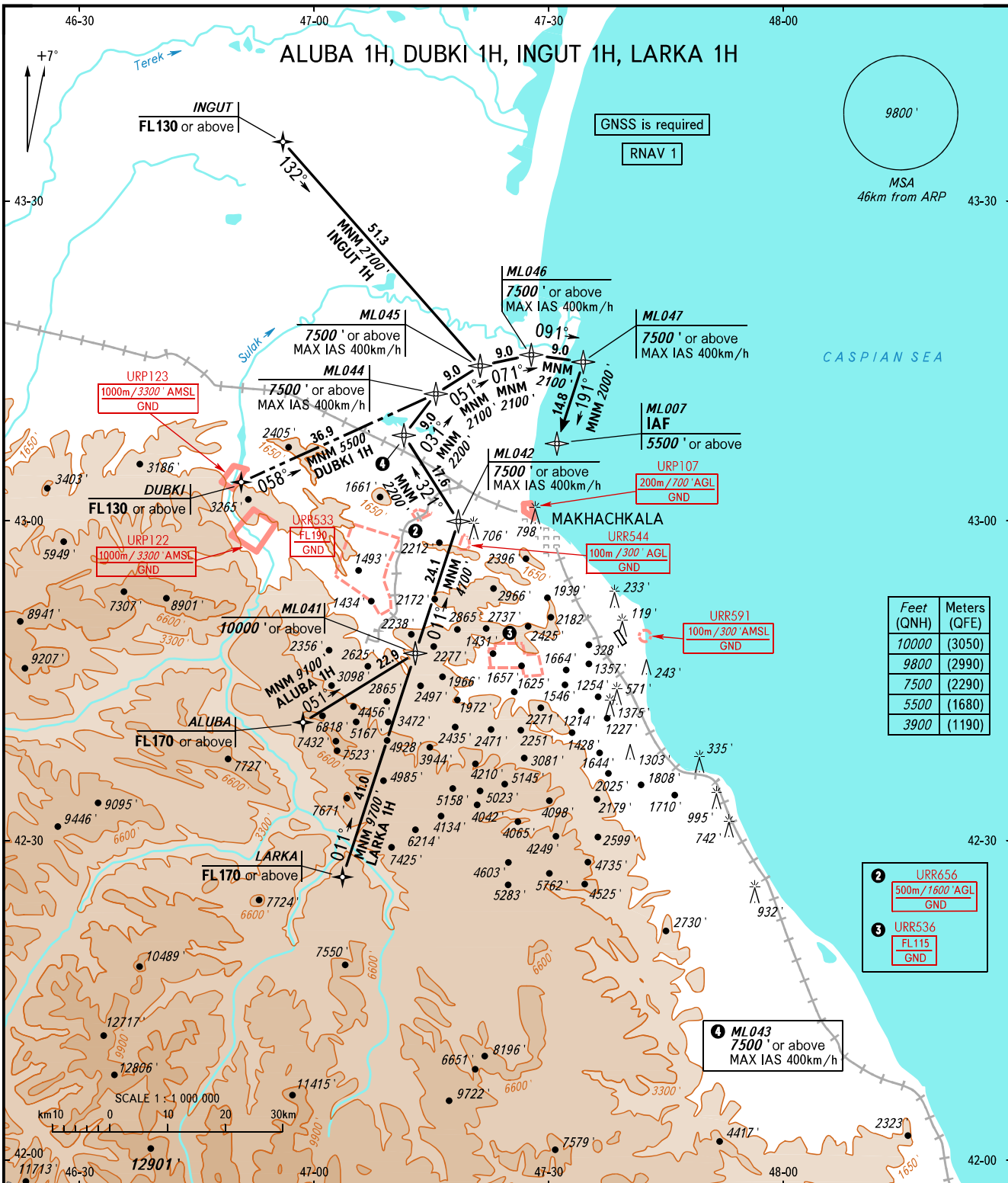
STANDARD ARRIVAL CHART
INSTRUMENT (STAR) - ICAO

TRANSITION
LEVEL: ①

MAKHACHKALA, RUSSIA

UYTASH

RNAV RWY 14



Feet (QNH)	Meters (QFE)
10000	(3050)
9800	(2990)
7500	(2290)
5500	(1680)
3900	(1190)

APPROACH 119.700
RADAR 121.300
TOWER 121.300

① TRANSITION LEVEL:
- FL110 when QNH is 1013 hPa (760mm mercury column) or above;
- FL120 when QNH is 977 hPa (733mm mercury column) or above but less than 1013 hPa (760mm mercury column);
- FL130 when QNH is less than 977 hPa (733mm mercury column).

BEARINGS AND TRACKS ARE MAGNETIC
ALTITUDES AND ELEVATIONS IN FEET
DISTANCES IN KILOMETRES

CHANGE: New chart