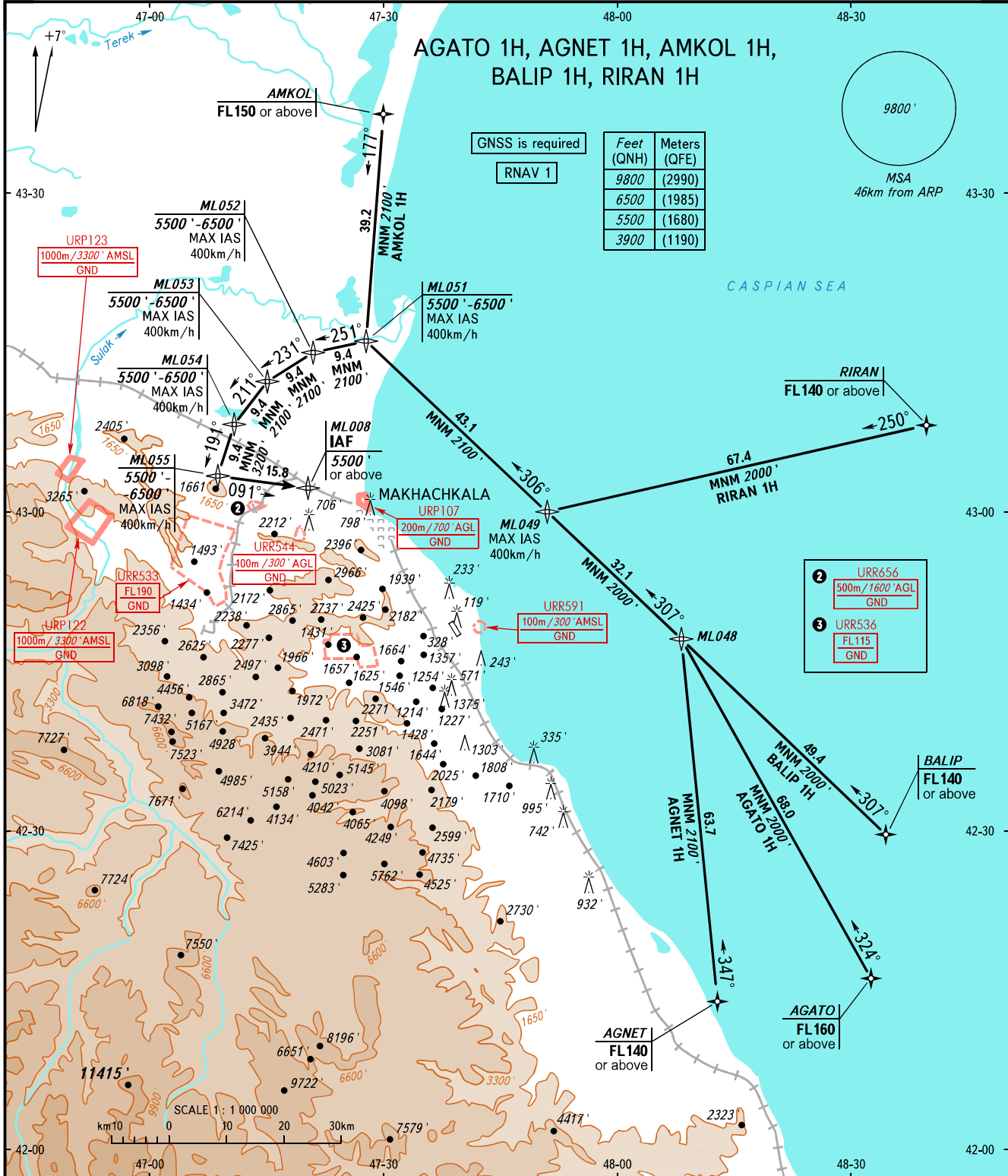


STANDARD ARRIVAL CHART
INSTRUMENT (STAR) - ICAO

MAKHACHKALA, RUSSIA
UYTASH
RNAV RWY 14

TRANSITION
LEVEL: ①



APPROACH 119.700
RADAR 121.300
TOWER 121.300

- ① TRANSITION LEVEL:
- FL110 when QNH is 1013 hPa (760mm mercury column) or above;
 - FL120 when QNH is 977 hPa (733mm mercury column) or above, but less than 1013 hPa (760mm mercury column);
 - FL130 when QNH is less than 977 hPa (733mm mercury column).

BEARINGS AND TRACKS ARE MAGNETIC
ALTITUDES AND ELEVATIONS IN FEET
DISTANCES IN KILOMETRES